

PROJECT	
TYPE	
NOTES	
QUANTITY	
DATE	

A3G50-TRI-SYS COMPONENTS TRIMLESS

A35613-

DESCRIPTION

G-50 Channel | Gravity Lift - Trimless - 1000mm / 39 3/8" / 2000mm / 78 3/4" / 3000mm / 118 1/8" - Black

GENERAL

Series: Snooker
 Subseries: Snooker G-50 Channel for Gravity Lift
 Partner: Prolicht
 Division: Architectural
 Installation: Trimless
 Product Type: Pendant
 Mounting Location: Ceiling

PHYSICAL

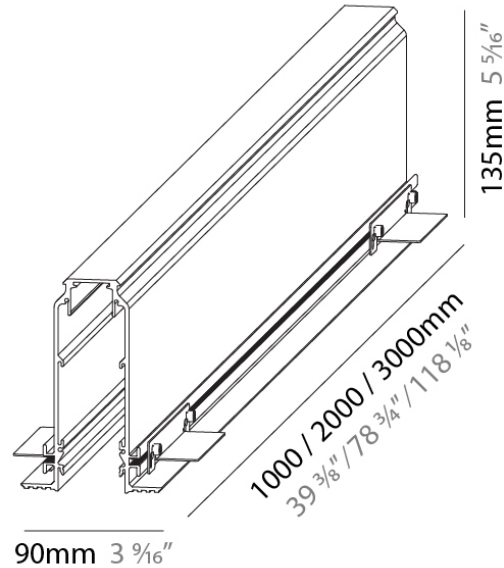
Shape: Rectangle
 Length (mm): 1000 / 2000 / 3000
 Length (in): 39 3/8"
 Width (mm): 90
 Width (in): 3 5/16"
 Height (mm): 135
 Height (in): 5 5/16"
 Weight (kg): 3.389 / 6.7 / 10.1
 Weight (lbs): 7.47 / 14.77 / 22.27
 Fixture Material: Extruded Aluminum

ELECTRICAL

Driver Included: Yes

RATINGS AND CERTIFICATIONS

Certified By: Certified for North American Standards
 IP rating: IP20



PROJECT
TYPE
NOTES
QUANTITY
DATE

A3G50-TRI-SYS COMPONENTS

A380041-

DESCRIPTION

Hangover Plug Shine - Track Head - 28mm / 1 1/8" x 300mm / 11 13/16" - 6.4W LED (Zhaga Standard) - 2700K / 3000K / 4000K - Lens 24°/32°/ 58°

GENERAL

Series: Hangover
 Subseries: Hangover Plug Standard (Track Insert)
 Partner: Prolicht
 Division: Architectural
 Light Distribution: Downlight

PHYSICAL

Aperture Sizes - Downlights: 1"
 Shape: Cylinder
 Diameter (mm): 28
 Diameter (in): 1 1/8
 Height (mm): 350
 Height (in): 13 3/4
 Weight (kg): 0.451
 Weight (lbs): 0.99
 Diffuser: Shine Ring 1-6
 Fixture Finish: SSR / BKV / CWI / CRY / HAB / UFT / ITA / RUA / FTG / MYG / LOD / PUS / FRO / FUP / KIA / POP / BLS / SPG / MEY / GOH / CHC / COM / ABZ / JAG / OBR / MOS / ROR
 Fixture Material: Aluminum
 Cable Details: 2,000mm or 4,000mm Cable - Black

ELECTRICAL

Input Wattage Range: 1 - 9 W
 Lamp Type: LED (Zhaga Standard)
 Input Wattage (W): 6.4
 Total Output Wattage (W): 5.8
 Dimming: 0-10V Dimming
 Driver Included: No
 Driver Location: External
 Input Voltage (V): 120

LED

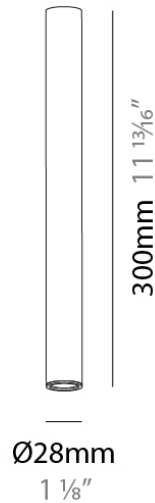
Delivered Lumen Range: 100 - 499 lm
 Number of LEDs: 1
 Color Temperature (°K): 2700 / 3000 / 4000
 Max. Delivered Lumen (lm): 328 / 363 / 386
 Nominal Lumen (lm): 448 / 483 / 514
 CRI: >90 CRI
 Upon Request: Special Color Temperature

OPTICAL

Optic°: 24 / 32 / 58
 Upon Request: Special Beam Angles

RATINGS AND CERTIFICATIONS

Certified By: Certified for North American Standards
 IP rating: IP20



A3G50-TRI-SYS COMPONENTS

A380044-

DESCRIPTION

Hangover Plug Decor - Blank Track Head - 28mm / 1 1/8" x 450mm / 17 11/16" -

GENERAL

Series: Hangover

Subseries: Hangover Plug Standard (Track Insert)

Partner: Prolicht

Division: Architectural

PHYSICAL

Aperture Sizes - Downlights: 1"

Shape: Cylinder

Diameter (mm): 28

Diameter (in): 1 1/8

Height (mm): 450

Height (in): 17 11/16

Weight (kg): 0.32

Weight (lbs): 0.706

Fixture Finish: SSR / BKV / CWI / CRY / HAB / UFT / ITA / RUA / FTG / MYG / LOD / PUS / FRO / FUP / KIA / POP / BLS / SPG / MEY / GOH / CHC / COM / ABZ / JAG / OBR / MOS / ROR

Fixture Material: Aluminum Die Cast

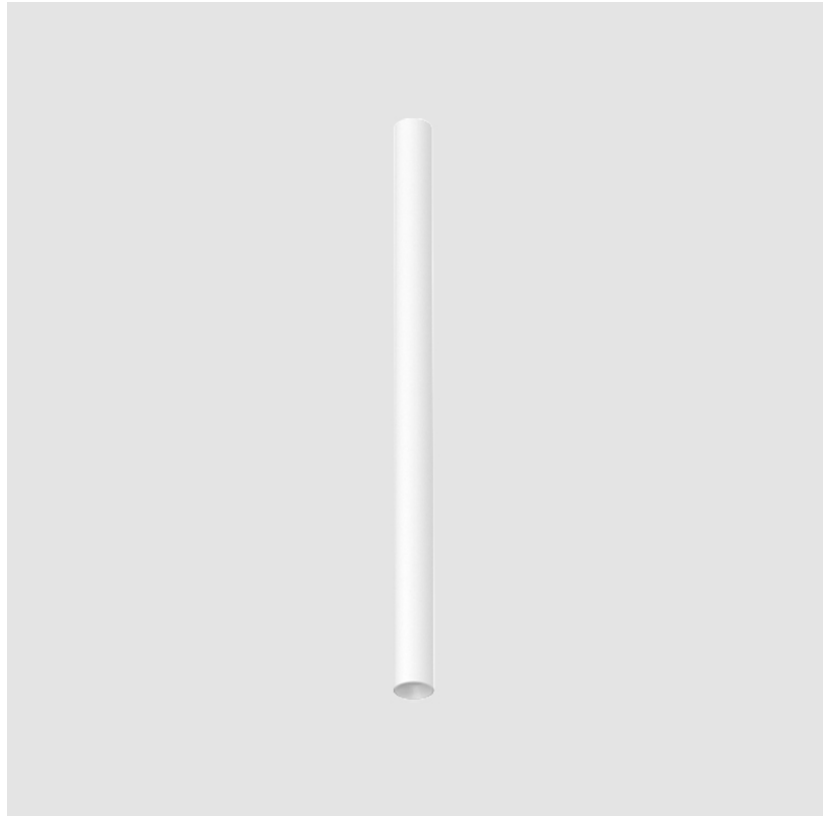
ELECTRICAL

Lamp Type: LED (Zhaga Standard)

RATINGS AND CERTIFICATIONS

Certified By: Certified for North American Standards

IP rating: IP20



A3G50-TRI-SYS COMPONENTS

PROJECT	_____
TYPE	_____
NOTES	_____
QUANTITY	_____
DATE	_____

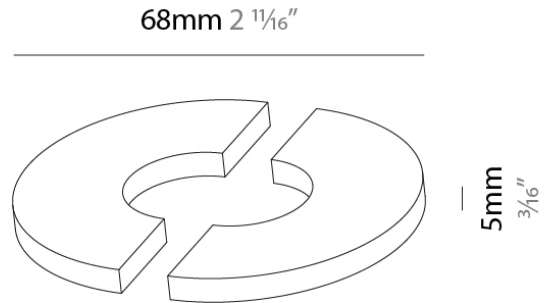
A380106-

DESCRIPTION
Hangover 75 - Indirect Diffuser

GENERAL
Series: Hangover
Subseries: Hangover 75
Partner: Prolicht
Division: Architectural

PHYSICAL
Shape: Round
Diameter (mm): 70
Diameter (in): 2 ¾
Fixture Finish: RED / ORG / YEL / GRN / BLU
Fixture Material: Acrylic

RATINGS AND CERTIFICATIONS
Certified By: Certified for North American Standards
IP rating: IP20



A3G50-TRI-SYS COMPONENTS SURFACE

A380107-

DESCRIPTION

Hangover Plug 40 - 150mm / 5 7/8" - 10.9W LED (Zhaga Standard) - 2700K / 3000K / 4000K - Dimmable - Reflector 40° / 50°

GENERAL

Series: Hangover
 Subseries: Hangover Plug 40
 Partner: Prolicht
 Division: Architectural
 Installation: Surface
 Product Type: Downlight
 Mounting Location: Ceiling
 Light Distribution: Downlight

PHYSICAL

Aperture Sizes - Downlights: 1"
 Shape: Cylinder
 Diameter (mm): 40
 Diameter (in): 1 9/16
 Height (mm): 150
 Height (in): 5 7/8
 Weight (kg): 0.452
 Weight (lbs): 9.96
 Diffuser: Shine Ring 1-6
 Fixture Finish: SSR / BKV / CWI / CRY / HAB / UFT / ITA / RUA / FTG / MYG / LOD / PUS / FRO / FUP / KIA / POP / BLS / SPG / MEY / GOH / CHC / COM / ABZ / JAG / OBR / MOS / ROR
 Fixture Material: Aluminum

ELECTRICAL

Input Wattage Range: 10 - 19 W
 Lamp Type: LED (Zhaga Standard)
 Input Wattage (W): 10.9
 Total Output Wattage (W): 10
 Dimming: 0-10V Dimming
 Driver Included: No
 Input Voltage (V): 48

LED

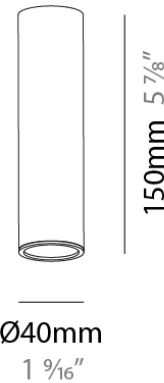
Delivered Lumen Range: 500 - 999 lm
 Color Temperature (°K): 2700 / 3000 / 4000
 Max. Delivered Lumen (lm): 788 / 829 / 840
 Nominal Lumen (lm): 1016 / 1068 / 1082
 CRI: >90 CRI
 Lamp Life (hrs): 50000

OPTICAL

Reflector°: 40 / 50

RATINGS AND CERTIFICATIONS

Certified By: Certified for North American Standards
 IP rating: IP20



PROJECT
TYPE
NOTES
QUANTITY
DATE

A3G50-TRI-SYS COMPONENTS SURFACE

A380111-

DESCRIPTION

Hangover Plug 75 - Track Head -150mm / 5 7/8" - 6.6W LED (Zhaga Standard) - 2700K / 3000K / 4000K - Dimmable - Lens 9° / 24° / 39°

GENERAL

Series: Hangover
 Subseries: Hangover Plug 75
 Partner: Prolicht
 Division: Architectural
 Installation: Surface
 Product Type: Downlight
 Mounting Location: Ceiling
 Light Distribution: Downlight

PHYSICAL

Aperture Sizes - Downlights: 2"
 Shape: Cylinder
 Diameter (mm): 75
 Diameter (in): 2 15/16
 Height (mm): 150
 Height (in): 5 7/8
 Weight (kg): 0.532
 Weight (lbs): 1.17
 Diffuser: Shine Ring 1-6
 Fixture Finish: SSR / BKV / CWI / CRY / HAB / UFT / ITA / RUA / FTG / MYG / LOD / PUS / FRO / FUP / KIA / POP / BLS / SPG / MEY / GOH / CHC / COM / ABZ / JAG / OBR / MOS / ROR
 Fixture Material: Aluminum

ELECTRICAL

Input Wattage Range: 1 - 9 W
 Lamp Type: LED (Zhaga Standard)
 Input Wattage (W): 6.6
 Total Output Wattage (W): 6
 Dimming: 0-10V Dimming
 Driver Included: No
 Input Voltage (V): 48

LED

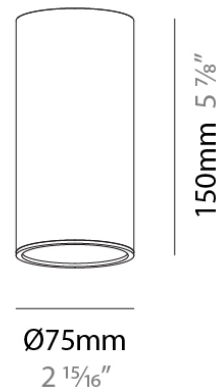
Delivered Lumen Range: 100 - 499 lm
 Color Temperature (°K): 2700 / 3000 / 4000
 Max. Delivered Lumen (lm): 385 / 408 / 442
 Nominal Lumen (lm): 455.22 / 482 / 522.17
 CRI: >90 CRI
 Lamp Life (hrs): 50000

OPTICAL

Optic°: 9 / 24 / 39

RATINGS AND CERTIFICATIONS

Certified By: Certified for North American Standards
 IP rating: IP20



A3G50-TRI-SYS COMPONENTS

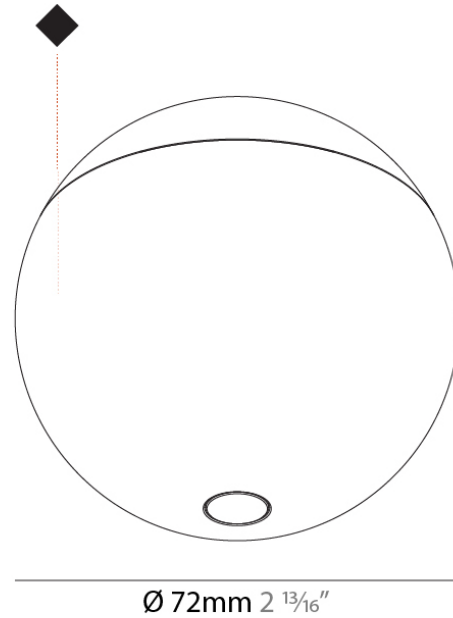
A38818-

DESCRIPTION
 Snooker Decor - Track - Blank Globe -

GENERAL
 Series: Snooker
 Partner: Prolicht
 Division: Architectural

PHYSICAL
 Shape: Round
 Diameter (mm): 72
 Diameter (in): 2 ¹³/₁₆
 Height (mm): 72
 Height (in): 2 ¹³/₁₆
 Weight (kg): 0.733
 Weight (lbs): 1.62
 Fixture Finish: SSR / BKV / CWI / CRY / HAB / UFT / ITA / RUA / FTG / MYG / LOD / PUS / FRO / FUP / KIA / POP / BLS / SPG / MEY / GOH / CHC / COM / ABZ / JAG / OBR / MOS / ROR
 Fixture Material: Aluminum Die Cast

RATINGS AND CERTIFICATIONS
 Certified By: Certified for North American Standards
 IP rating: IP20



A3G50-TRI-SYS COMPONENTS

PROJECT	_____
TYPE	_____
NOTES	_____
QUANTITY	_____
DATE	_____

A38825

DESCRIPTION

G-50 Channel | Gravity Lift - Black Endplate - 1 Pair

GENERAL

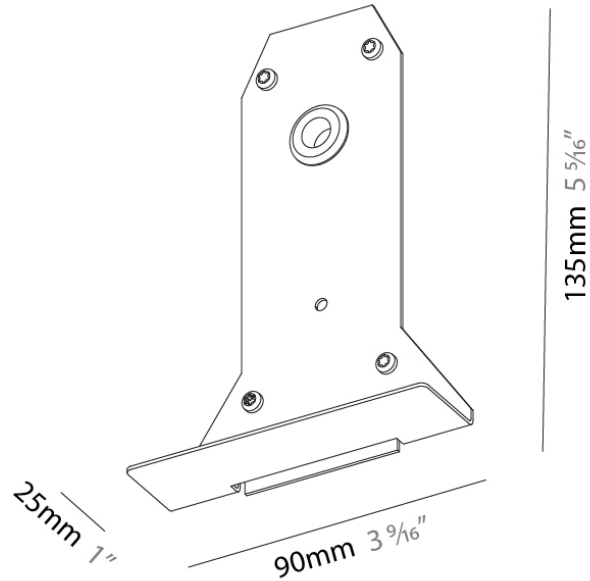
Series: Snooker
Subseries: Snooker G-50 Channel for Gravity Lift
Partner: Prolicht
Division: Architectural

PHYSICAL

Shape: Rectangle
Length (mm): 90
Length (in): 3 ⁹/₁₆
Width (mm): 25
Width (in): 1
Height (mm): 135
Height (in): 5 ⁵/₁₆
Weight (kg): 0.149
Weight (lbs): 0.33
Fixture Material: Metal

RATINGS AND CERTIFICATIONS

Certified By: Certified for North American Standards
IP rating: IP20



A3G50-TRI-SYS COMPONENTS

PROJECT	
TYPE	
NOTES	
QUANTITY	
DATE	

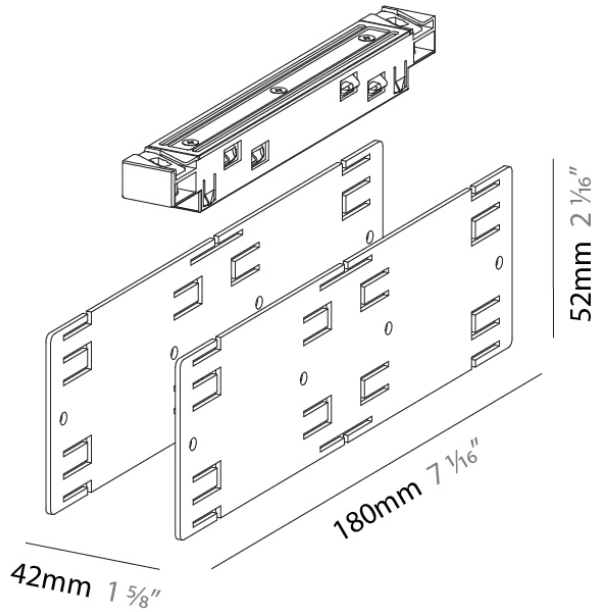
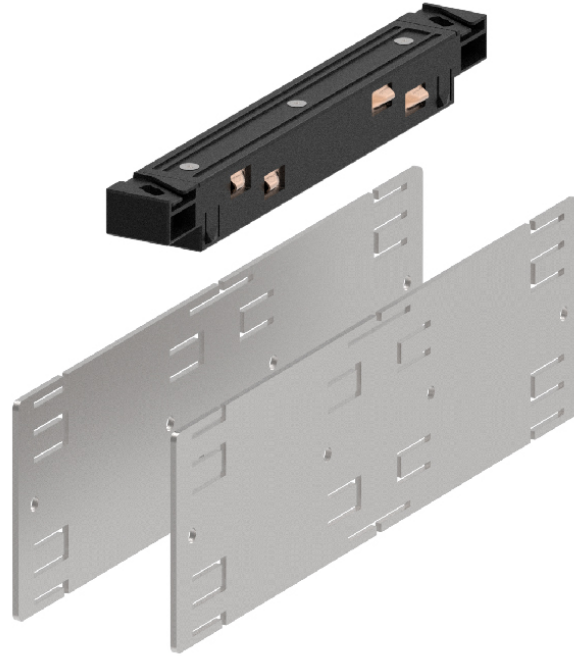
A38837

DESCRIPTION
G-50 Channel | Gravity Lift - Connector Device

GENERAL
Series: Snooker
Subseries: Snooker G-50 Channel for Gravity Lift
Partner: Prolicht
Division: Architectural
Product Type: Linear Profiles

PHYSICAL
Shape: Rectangle
Length (mm): 180
Length (in): 7 1/16
Width (mm): 42
Width (in): 1 5/8
Height (mm): 52
Height (in): 2 1/16
Weight (kg): 0.135
Weight (lbs): 0.3
Fixture Finish: SSR / BKV / CWI / CRY / HAB / UFT / ITA / RUA / FTG / MYG / LOD / PUS / FRO / FUP / KIA / POP / BLS / SPG / MEY / GOH / CHC / COM / ABZ / JAG / OBR / MOS / ROR
Fixture Material: Plastic

RATINGS AND CERTIFICATIONS
Certified By: Certified for North American Standards
IP rating: IP20



PROJECT	
TYPE	
NOTES	
QUANTITY	
DATE	

A3G50-TRI-SYS COMPONENTS

A38838-

DESCRIPTION

G-50 Channel | Gravity Lift - Supplier Unit 150W Track 48V

GENERAL

Series: Snooker
 Subseries: Snooker G-50 Channel for Gravity Lift
 Partner: Prolicht
 Division: Architectural

PHYSICAL

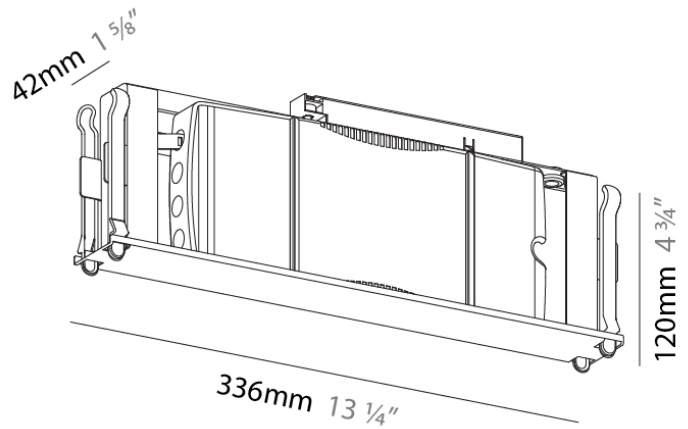
Shape: Rectangle
 Length (mm): 336
 Length (in): 13 1/4
 Width (mm): 42
 Width (in): 1 5/8
 Height (mm): 120
 Height (in): 4 3/4
 Weight (kg): 1.325
 Weight (lbs): 2 15/16
 Fixture Finish: SSR / BKV / CWI / CRY / HAB / UFT / ITA / RUA / FTG / MYG / LOD / PUS / FRO / FUP / KIA / POP / BLS / SPG / MEY / GOH / CHC / COM / ABZ / JAG / OBR / MOS / ROR
 Fixture Material: Plastic

ELECTRICAL

Total Output Wattage (W): 96
 Input Voltage (V): 48

RATINGS AND CERTIFICATIONS

Certified By: Certified for North American Standards
 IP rating: IP20



A3G50-TRI-SYS COMPONENTS

PROJECT
TYPE
NOTES
QUANTITY
DATE

A38839-

DESCRIPTION

G-50 Channel | Gravity Lift - Power Supply Unit c/w Remote 96W, 0-10V Dimming Driver + Bridge - for 48Vdc Track - Trimless

GENERAL

Series: Snooker
 Subseries: Snooker G-50 Channel for Gravity Lift
 Partner: Prolicht
 Division: Architectural

PHYSICAL

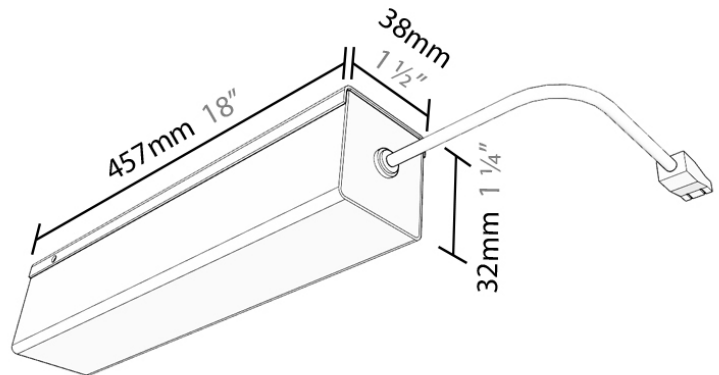
Shape: Rectangle
 Length (mm): 336
 Length (in): 13 1/4
 Width (mm): 42
 Width (in): 1 5/8
 Height (mm): 120
 Height (in): 4 3/4
 Weight (kg): 1.325
 Weight (lbs): 2 15/16
 Fixture Finish: SSR / BKV / CWI / CRY / HAB / UFT / ITA / RUA / FTG / MYG / LOD / PUS / FRO / FUP / KIA / POP / BLS / SPG / MEY / GOH / CHC / COM / ABZ / JAG / OBR / MOS / ROR
 Fixture Material: Aluminum

ELECTRICAL

Input Wattage Range: 100 - 149 W
 Lamp Type: LED
 Input Wattage (W): 100
 Total Output Wattage (W): 96
 Dimming: Non-Dimmable / 0-10V Dimming
 Driver Included: Yes
 Driver Location: Integrated
 Driver Type: Constant Voltage - 120-277Vac
 Driver Class: Class 2
 Input Voltage (V): Universal
 Output Voltage (V): 48

RATINGS AND CERTIFICATIONS

Certified By: Certified for North American Standards
 IP rating: IP20



PROJECT	
TYPE	
NOTES	
QUANTITY	
DATE	

A3G50-TRI-SYS COMPONENTS

A38840-

DESCRIPTION

G-50 Channel | Gravity Lift - Gravity Lift 48V 500mA (non-dimming)

GENERAL

Series: Snooker
 Subseries: Snooker G-50 Channel for Gravity Lift
 Partner: Prolicht
 Division: Architectural

PHYSICAL

Shape: Rectangle
 Length (mm): 350
 Length (in): 13 3/4
 Width (mm): 42
 Width (in): 1 5/8
 Height (mm): 120
 Height (in): 4 3/4
 Weight (kg): 0.587
 Weight (lbs): 1.29

Fixture Finish: SSR / BKV / CWI / CRY / HAB / UFT / ITA / RUA / FTG / MYG / LOD / PUS / FRO / FUP / KIA / POP / BLS / SPG / MEY / GOH / CHC / COM / ABZ / JAG / OBR / MOS / ROR

Fixture Material: Aluminum

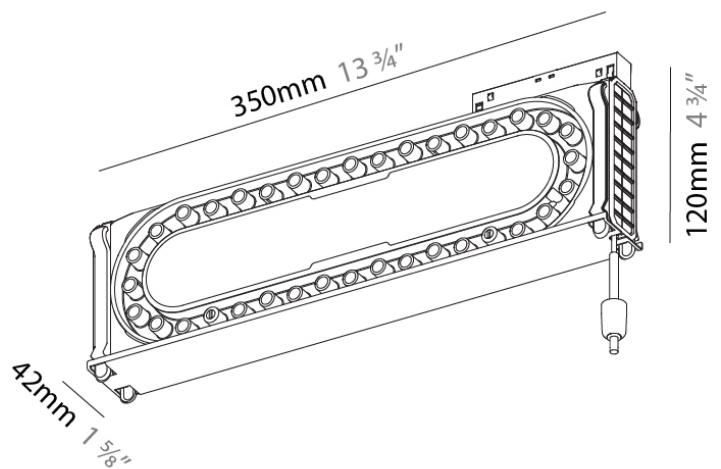
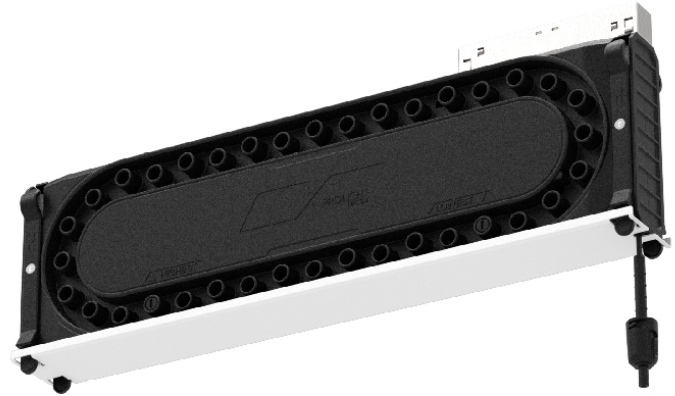
ELECTRICAL

Dimming: Non-Dimmable

RATINGS AND CERTIFICATIONS

Certified By: Certified for North American Standards

IP rating: IP20



PROJECT	
TYPE	
NOTES	
QUANTITY	
DATE	

A3G50-TRI-SYS COMPONENTS

A38841-

DESCRIPTION

G-50 Channel | Gravity Lift - Gravity Lift 48V 500mA (0-10V Dimmable)

GENERAL

Series: Snooker
 Subseries: Snooker G-50 Channel for Gravity Lift
 Partner: Prolicht
 Division: Architectural

PHYSICAL

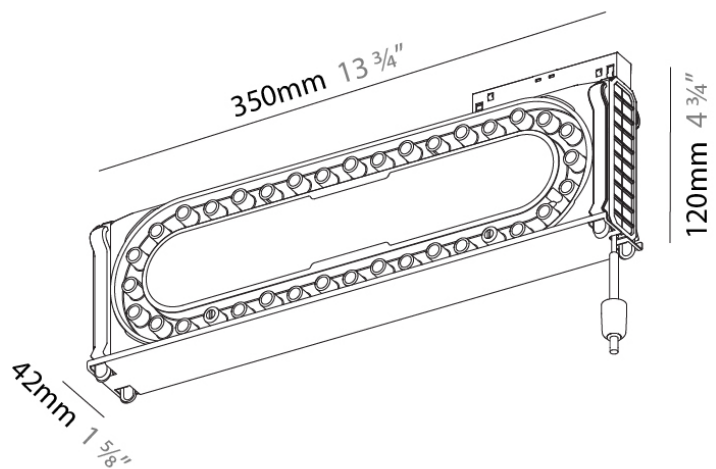
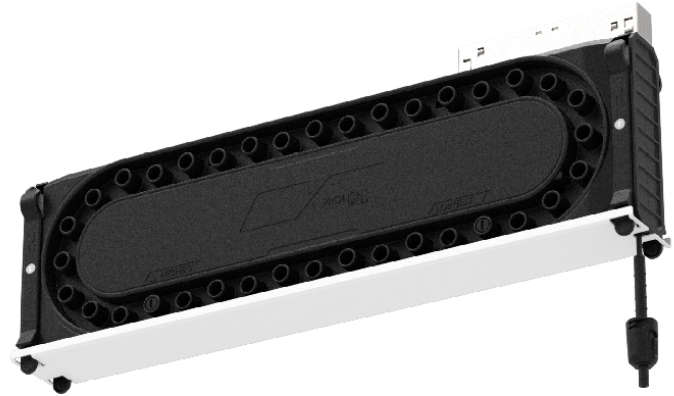
Shape: Rectangle
 Length (mm): 350
 Length (in): 13 3/4
 Width (mm): 42
 Width (in): 1 5/8
 Height (mm): 120
 Height (in): 4 3/4
 Weight (kg): 0.601
 Weight (lbs): 1.32
 Fixture Finish: SSR / BKV / CWI / CRY / HAB / UFT / ITA / RUA / FTG / MYG / LOD / PUS / FRO / FUP / KIA / POP / BLS / SPG / MEY / GOH / CHC / COM / ABZ / JAG / OBR / MOS / ROR
 Fixture Material: Aluminum

ELECTRICAL

Dimming: 0-10V Dimming

RATINGS AND CERTIFICATIONS

Certified By: Certified for North American Standards
 IP rating: IP20



A3G50-TRI-SYS COMPONENTS

PROJECT	
TYPE	
NOTES	
QUANTITY	
DATE	

A38842-

DESCRIPTION

G-50 Channel | Gravity Lift - Mechanical Gravity Lift for G-50

GENERAL

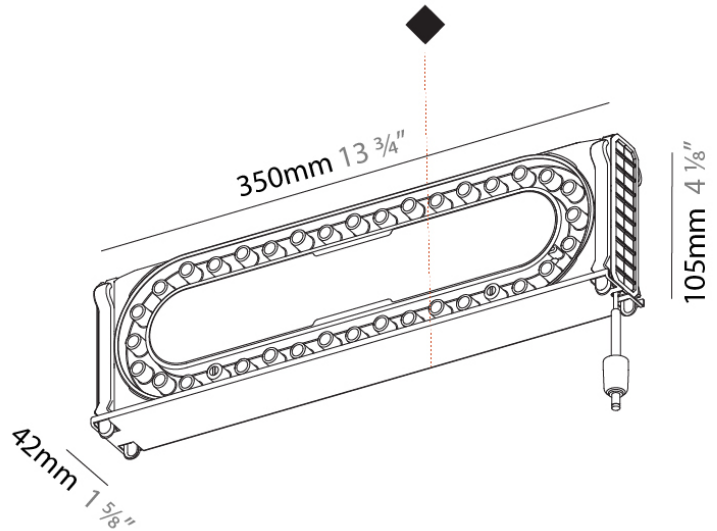
Series: Snooker
 Subseries: Snooker G-50 Channel for Gravity Lift
 Partner: Prolicht
 Division: Architectural

PHYSICAL

Shape: Rectangle
 Length (mm): 350
 Length (in): 13 ³/₄
 Width (mm): 42
 Width (in): 1 ⁵/₈
 Height (mm): 105
 Height (in): 4 ¹/₈
 Weight (kg): 0.582
 Weight (lbs): 1.28
 Fixture Finish: SSR / BKV / CWI / CRY / HAB / UFT / ITA / RUA / FTG / MYG / LOD / PUS / FRO / FUP / KIA / POP / BLS / SPG / MEY / GOH / CHC / COM / ABZ / JAG / OBR / MOS / ROR
 Fixture Material: Aluminum

RATINGS AND CERTIFICATIONS

Certified By: Certified for North American Standards
 IP rating: IP20



A3G50-TRI-SYS COMPONENTS

PROJECT
TYPE
NOTES
QUANTITY
DATE

A38843

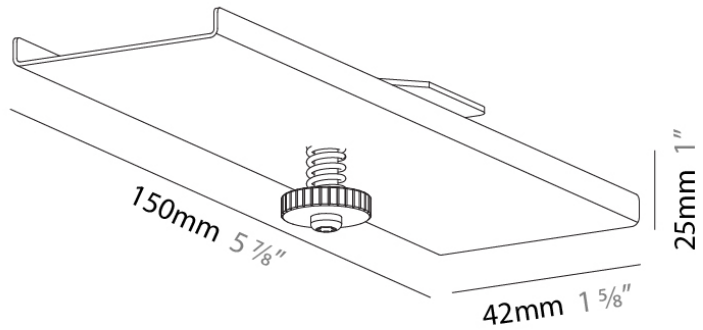
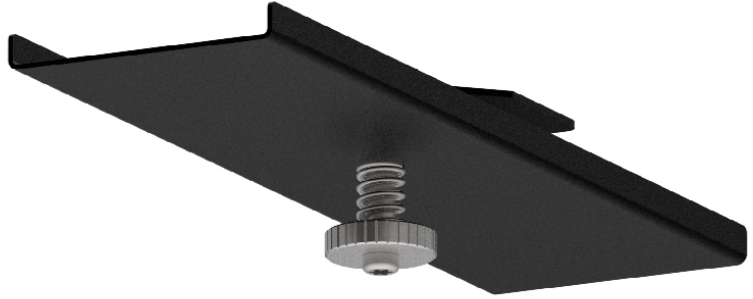
DESCRIPTION
G-50 Channel | Gravity Lift - Gravity Alignment Kit for RL Track

GENERAL
Series: Snooker
Subseries: Snooker Trimless Profile System
Partner: Prolicht
Division: Architectural
Product Type: Linear Profiles
Mounting Location: Ceiling

PHYSICAL
Shape: Rectangle
Length (mm): 150
Length (in): 5 7/8
Width (mm): 42
Width (in): 1 5/8
Height (mm): 25
Height (in): 1
Weight (kg): 0.063
Weight (lbs): 1/8
Fixture Finish: SSR / BKV / CWI / CRY / HAB / UFT / ITA / RUA / FTG / MYG / LOD / PUS / FRO / FUP / KIA / POP / BLS / SPG / MEY / GOH / CHC / COM / ABZ / JAG / OBR / MOS / ROR
Fixture Material: Metal

ELECTRICAL
Driver Included: No

RATINGS AND CERTIFICATIONS
Certified By: Certified for North American Standards
IP rating: IP20



A3G50-TRI-SYS COMPONENTS

A38862-

DESCRIPTION

Snooker - Track- Suspension Insert for Gravity Lift - 6.4W LED (Zhaga Standard) - 2700K / 3000K / 4000K

GENERAL

Series: Snooker
 Partner: Prolicht
 Division: Architectural
 Light Distribution: Downlight

PHYSICAL

Shape: Round
 Diameter (mm): 72
 Diameter (in): 2 ¹³/₁₆
 Height (mm): 72
 Height (in): 2 ¹³/₁₆
 Weight (kg): 0.733
 Weight (lbs): 1.62
 Fixture Finish: SSR / BKV / CWI / CRY / HAB / UFT / ITA / RUA / FTG / MYG / LOD / PUS / FRO / FUP / KIA / POP / BLS / SPG / MEY / GOH / CHC / COM / ABZ / JAG / OBR / MOS / ROR
 Fixture Material: Aluminum Die Cast

ELECTRICAL

Input Wattage Range: 1 - 9 W
 Lamp Type: LED (Zhaga Standard)
 Input Wattage (W): 6.5
 Total Output Wattage (W): 5.8
 Dimming: 0-10V Dimming
 Driver Included: No
 Driver Location: External
 Input Voltage (V): 48
 Constant Current (MA): 500

LED

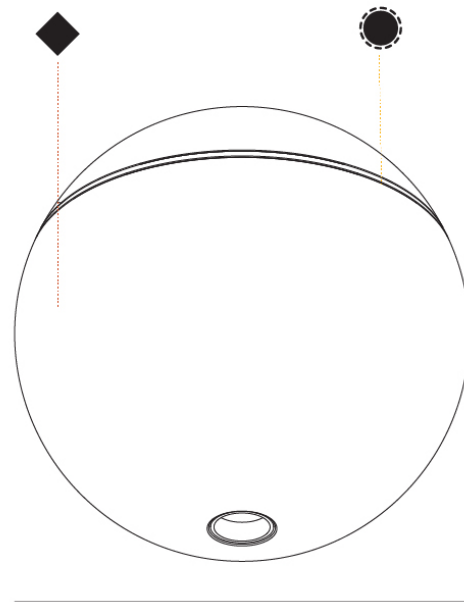
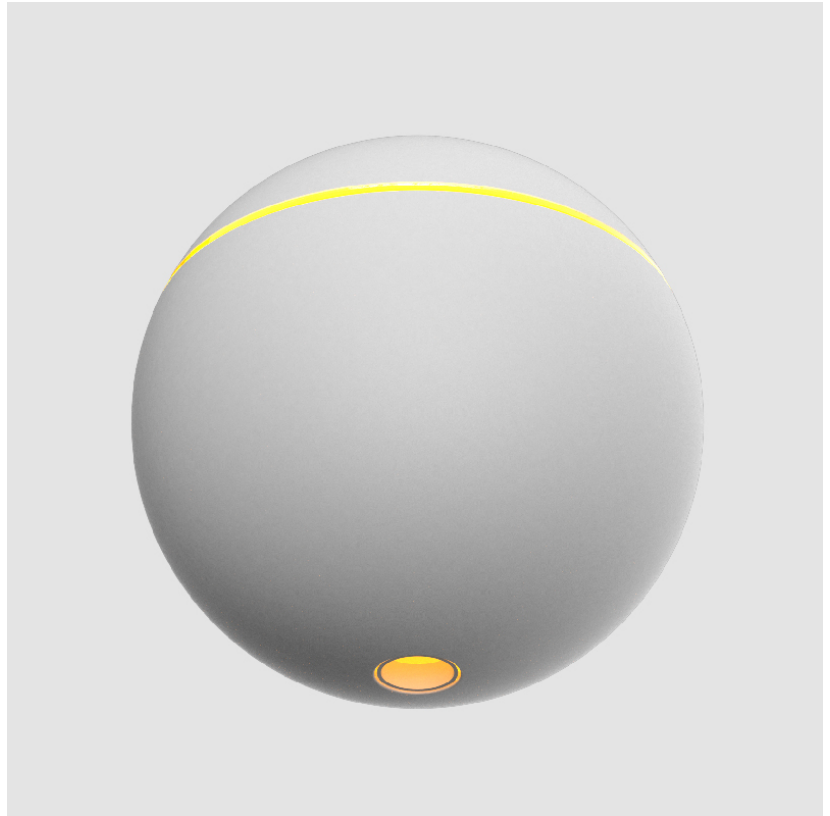
Delivered Lumen Range: 100 - 499 lm
 Number of LEDs: 1
 Color Temperature (°K): 2700 / 3000 / 4000
 Max. Delivered Lumen (lm): 270 / 290 / 310
 Nominal Lumen (lm): 448 / 483 / 514
 CRI: >90 CRI
 Upon Request: Special Color Temperature 3500K available in minimum quantities (larger quantities upon request)

OPTICAL

Beam Angle: 55
 Upon Request: 55° Beam Angle: Dual Focus lens technology - very low UGR

RATINGS AND CERTIFICATIONS

Certified By: Certified for North American Standards
 IP rating: IP20



Ø 72mm 2 ¹³/₁₆"



A3G50-TRI-SYS COMPONENTS

A38866-

DESCRIPTION

Snooker - G-Board - Suspension Insert - 6.4W LED (Zhaga Standard) - 2700K / 3000K / 4000K including Cable

GENERAL

Series: Snooker _____
 Partner: Prolight _____
 Division: Architectural _____
 Light Distribution: Downlight _____

PHYSICAL

Shape: Round _____
 Diameter (mm): 72 _____
 Diameter (in): 2 ¹³/₁₆ _____
 Height (mm): 72 _____
 Height (in): 2 ¹³/₁₆ _____
 Weight (kg): 0.733 _____
 Weight (lbs): 1.6 _____
 Fixture Finish: SSR / BKV / CWI / CRY / HAB / UFT / ITA / RUA / FTG / MYG / LOD / PUS / FRO / FUP / KIA / POP / BLS / SPG / MEY / GOH / CHC / COM / ABZ / JAG / OBR / MOS / ROR _____
 Fixture Material: Aluminum Die Cast _____

ELECTRICAL

Input Wattage Range: 1 - 9 W _____
 Lamp Type: LED (Zhaga Standard) _____
 Input Wattage (W): 6.5 _____
 Total Output Wattage (W): 5.8 _____
 Driver Included: No _____
 Driver Location: External _____
 Input Voltage (V): 48 _____
 Constant Current (mA): 500 _____

LED

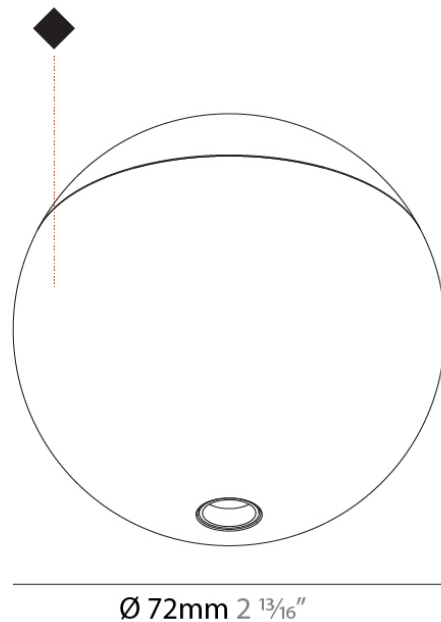
Delivered Lumen Range: 100 - 499 lm _____
 Number of LEDs: 1 _____
 Color Temperature (°K): 2700 / 3000 / 4000 _____
 Max. Delivered Lumen (lm): 270 / 290 / 310 _____
 Nominal Lumen (lm): 448 / 483 / 514 _____
 CRI: >90 CRI _____
 Upon Request: Special Color Temperature 3500K available in minimum quantities (larger quantities upon request) _____

OPTICAL

Beam Angle: 55 _____
 Upon Request: 55° Beam Angle: Dual Focus lens technology - very low UGR _____

RATINGS AND CERTIFICATIONS

Certified By: Certified for North American Standards _____
 IP rating: IP20 _____



A3G50-TRI-SYS COMPONENTS

A3T100-

DESCRIPTION

Centriq - Track Head - 4.4W LED (Zhaga Standard) - 2700K / 3000K / 4000K - Dimmable - Lens: 24°/32°

GENERAL

Series: Centriq
 Partner: Prolicht
 Division: Architectural
 Product Type: Spots
 Light Distribution: Adjustable

PHYSICAL

Aperture Sizes - Downlights: 1"
 Shape: Cylinder
 Diameter (mm): 30
 Diameter (in): 1 5/8
 Height (mm): 186
 Height (in): 7 5/16
 Weight (kg): 0.078
 Weight (lbs): 0.17
 Fixture Finish: SSR / BKV / CWI / CRY / HAB / UFT / ITA / RUA / FTG / MYG / LOD / PUS / FRO / FUP / KIA / POP / BLS / SPG / MEY / GOH / CHC / COM / ABZ / JAG / OBR / MOS / ROR
 Fixture Material: Aluminum

ELECTRICAL

Input Wattage Range: 1 - 9 W
 Lamp Type: LED (Zhaga Standard)
 Input Wattage (W): 4.4
 Total Output Wattage (W): 4
 Dimming: 0-10V Dimming
 Driver Included: No
 Driver Location: External
 Input Voltage (V): 120

LED

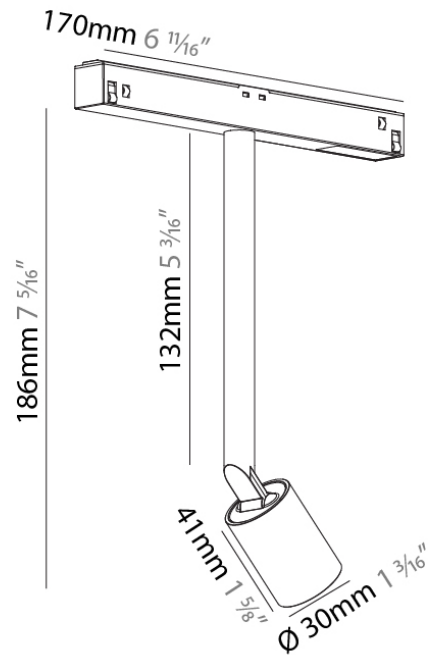
Delivered Lumen Range: 100 - 499 lm
 Number of LEDs: 1
 Color Temperature (°K): 2700 / 3000 / 4000
 Max. Delivered Lumen (lm): 260 / 270 / 290
 Nominal Lumen (lm): 344 / 360 / 392
 CRI: >90 CRI
 Upon Request: Special Color Temperature 3500K available in minimum quantities (larger quantities upon request)

OPTICAL

Optic°: 24 / 32
 Adjustability: Rotational 360°; Tilt 90°
 Upon Request: Special Beam Angles

RATINGS AND CERTIFICATIONS

Certified By: Certified for North American Standards
 IP rating: IP20



A3G50-TRI-SYS COMPONENTS

A3T101-

DESCRIPTION

Centriq - Track Head - 6.4W LED (Zhaga Standard) - 2700K / 3000K / 4000K - Dimmable

GENERAL

Series: Centriq _____
 Partner: Prolicht _____
 Division: Architectural _____
 Product Type: Spots _____
 Light Distribution: Adjustable _____

PHYSICAL

Aperture Sizes - Downlights: 1" _____
 Shape: Cylinder _____
 Diameter (mm): 40 _____
 Diameter (in): 1 9/16 _____
 Height (mm): 200 _____
 Height (in): 7 7/8 _____
 Weight (kg): 0.132 _____
 Weight (lbs): 0.29 _____
 Fixture Finish: SSR / BKV / CWI / CRY / HAB / UFT / ITA / RUA / FTG / MYG / LOD / PUS / FRO / FUP / KIA / POP / BLS / SPG / MEY / GOH / CHC / COM / ABZ / JAG / OBR / MOS / ROR _____
 Fixture Material: Aluminum _____

ELECTRICAL

Input Wattage Range: 1 - 9 W _____
 Lamp Type: LED (Zhaga Standard) _____
 Input Wattage (W): 6.5 _____
 Total Output Wattage (W): 5.8 _____
 Dimming: 0-10V Dimming _____
 Driver Included: No _____
 Driver Location: External _____
 Input Voltage (V): 120 _____

LED

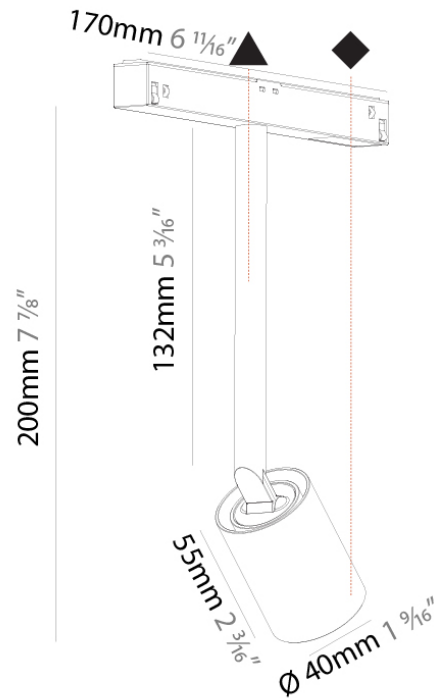
Delivered Lumen Range: 100 - 499 lm _____
 Number of LEDs: 1 _____
 Color Temperature (°K): 2700 / 3000 / 4000 _____
 Max. Delivered Lumen (lm): 360 / 390 / 420 _____
 Nominal Lumen (lm): 448 / 483 / 514 _____
 CRI: >90 CRI _____
 Upon Request: Special Color Temperature ***3500K available in minimum quantities (larger quantities upon request) _____

OPTICAL

Reflector: 10 _____
 Adjustability: Rotational 360°; Tilt 90° _____
 Upon Request: Special Beam Angles _____

RATINGS AND CERTIFICATIONS

Certified By: Certified for North American Standards _____
 IP rating: IP20 _____



PROJECT	
TYPE	
NOTES	
QUANTITY	
DATE	

A3G50-TRI-SYS COMPONENTS

A3T102-

DESCRIPTION

Centriq - Track Head - 6.6W LED (Zhaga Standard) - 2700K / 3000K / 4000K - Dimmable - Reflector: 20°/31°/36°/40°/50°

GENERAL

Series: Centriq
 Partner: Prolicht
 Division: Architectural
 Product Type: Spots
 Light Distribution: Adjustable

PHYSICAL

Aperture Sizes - Downlights: 1"
 Shape: Cylinder
 Diameter (mm): 40
 Diameter (in): 1 9/16
 Height (mm): 200
 Height (in): 7 7/8
 Weight (kg): 0.159
 Weight (lbs): 0.35
 Fixture Finish: SSR / BKV / CWI / CRY / HAB / UFT / ITA / RUA / FTG / MYG / LOD / PUS / FRO / FUP / KIA / POP / BLS / SPG / MEY / GOH / CHC / COM / ABZ / JAG / OBR / MOS / ROR
 Fixture Material: Aluminum

ELECTRICAL

Input Wattage Range: 1 - 9 W
 Lamp Type: LED (Zhaga Standard)
 Input Wattage (W): 6.5
 Total Output Wattage (W): 5.9
 Dimming: 0-10V Dimming
 Driver Included: No
 Driver Location: External
 Input Voltage (V): 120

LED

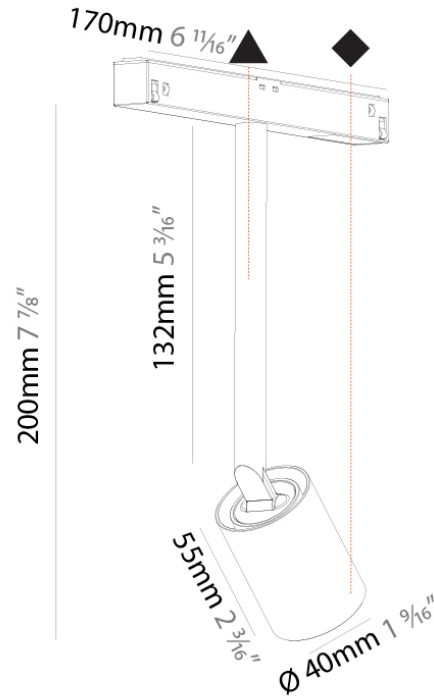
Delivered Lumen Range: 100 - 499 lm
 Number of LEDs: 1
 Color Temperature (°K): 2700 / 3000 / 4000
 Max. Delivered Lumen (lm): 468 / 490 / 520
 Nominal Lumen (lm): 732 / 769 / 780
 CRI: >90 CRI
 Upon Request: Special Color Temperature 3500K available in minimum quantities (larger quantities upon request)

OPTICAL

Reflector°: 20 / 31 / 36 / 40 / 50
 Adjustability: Rotational 360°; Tilt 90°
 Upon Request: Special Beam Angles

RATINGS AND CERTIFICATIONS

Certified By: Certified for North American Standards
 IP rating: IP20



A3G50-TRI-SYS COMPONENTS

A3T103-

DESCRIPTION

Centriq - Track Head - 9.3W LED (Zhaga Standard) - 2700K / 3000K / 4000K - Dimmable

GENERAL

Series: Centriq _____
 Partner: Prolicht _____
 Division: Architectural _____
 Product Type: Spots _____
 Light Distribution: Adjustable _____

PHYSICAL

Aperture Sizes - Downlights: 2" _____
 Shape: Cylinder _____
 Diameter (mm): 55 _____
 Diameter (in): 2 ³/₁₆ _____
 Height (mm): 224 _____
 Height (in): 8 ¹³/₁₆ _____
 Weight (kg): 0.554 _____
 Weight (lbs): 1.22 _____
 Fixture Finish: SSR / BKV / CWI / CRY / HAB / UFT / ITA / RUA / FTG / MYG / LOD / PUS / FRO / FUP / KIA / POP / BLS / SPG / MEY / GOH / CHC / COM / ABZ / JAG / OBR / MOS / ROR _____
 Fixture Material: Aluminum _____

ELECTRICAL

Input Wattage Range: 1 - 9 W _____
 Lamp Type: LED (Zhaga Standard) _____
 Input Wattage (W): 9.2 _____
 Total Output Wattage (W): 8.4 _____
 Dimming: 0-10V Dimming _____
 Driver Included: No _____
 Driver Location: External _____
 Input Voltage (V): 120 _____

LED

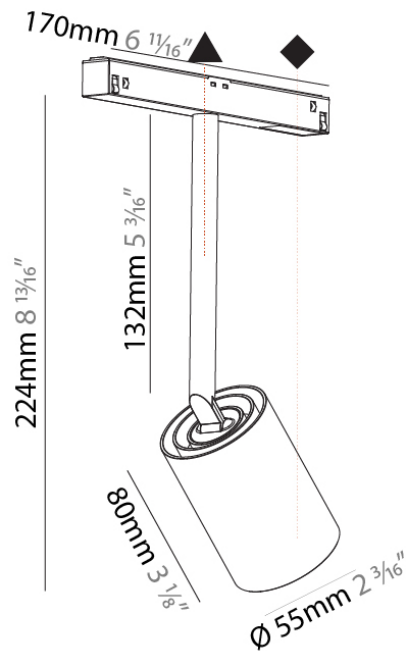
Delivered Lumen Range: 500 - 999 lm _____
 Number of LEDs: 1 _____
 Color Temperature (°K): 2700 / 3000 / 4000 _____
 Max. Delivered Lumen (lm): 486 / 534 / 548 _____
 Nominal Lumen (lm): 625 / 660 / 712 _____
 CRI: >80 CRI _____
 Upon Request: Special Color Temperature 3500K available in minimum quantities (larger quantities upon request) _____

OPTICAL

Reflector: 9 _____
 Adjustability: Rotational 360°; Tilt 90° _____
 Upon Request: Special Beam Angles _____

RATINGS AND CERTIFICATIONS

Certified By: Certified for North American Standards _____
 IP rating: IP20 _____



A3G50-TRI-SYS COMPONENTS

A3T104-

DESCRIPTION

Centriq - Track Head - 12.1W LED (Zhaga Standard) - 2700K / 3000K / 4000K - Dimmable - 15° / 17° / 25° / 33° / 35° / 46°

GENERAL

Series: Centriq _____
 Partner: Prolicht _____
 Division: Architectural _____
 Product Type: Spots _____
 Light Distribution: Adjustable _____

PHYSICAL

Aperture Sizes - Downlights: 2" _____
 Shape: Cylinder _____
 Diameter (mm): 55 _____
 Diameter (in): 2 3/16 _____
 Height (mm): 224 _____
 Height (in): 8 13/16 _____
 Weight (kg): 0.562 _____
 Weight (lbs): 1.24 _____
 Fixture Finish: SSR / BKV / CWI / CRY / HAB / UFT / ITA / RUA / FTG / MYG / LOD / PUS / FRO / FUP / KIA / POP / BLS / SPG / MEY / GOH / CHC / COM / ABZ / JAG / OBR / MOS / ROR _____
 Fixture Material: Aluminum _____

ELECTRICAL

Input Wattage Range: 10 - 19 W _____
 Lamp Type: LED (Zhaga Standard) _____
 Input Wattage (W): 12.0 _____
 Total Output Wattage (W): 10.6 _____
 Dimming: 0-10V Dimming _____
 Driver Included: No _____
 Driver Location: External _____
 Input Voltage (V): 120 _____

LED

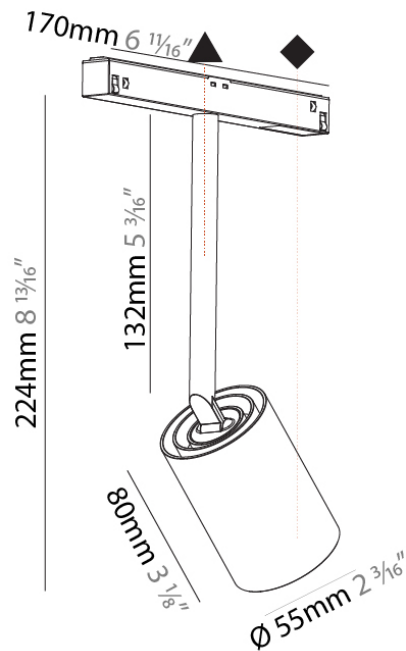
Delivered Lumen Range: 500 - 999 lm _____
 Number of LEDs: 1 _____
 Color Temperature (°K): 2700 / 3000 / 4000 _____
 Max. Delivered Lumen (lm): 720 / 760 / 820 _____
 Nominal Lumen (lm): 1196 / 1257 / 1275 _____
 CRI: >90 CRI _____
 Upon Request: Special Color Temperature 3500K available in minimum quantities (larger quantities upon request) _____

OPTICAL

Reflector°: 15 / 17 / 25 / 33 / 35 / 46 _____
 Adjustability: Rotational 360°; Tilt 90° _____
 Upon Request: Special Beam Angles _____

RATINGS AND CERTIFICATIONS

Certified By: Certified for North American Standards _____
 IP rating: IP20 _____






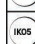






LEGEND

	floor-mounted		pivotal		special LED (upon request) RGB, RGBW, tunable, gold+, meat+, art+, fashion+
	wall and ceiling: recessed and surface mounted		rotating		warm dim / natural dimming LED
	ceiling-mounted and wall-mounted		illuminate tilted		rechargeable battery powered
	wall-mounted		color of suspension cable		fixture with natural vivid LED (upon request)
	omni-directional light distribution		length of suspension cable		color rendering index
	direct light distribution		reflector degree selection		color temperature
	direct/indirect light distribution		super spot		lumen (luminous flux)
	indirect light distribution		lens		efficacy (lumens per watt)
	asymmetric light distribution		lens pack		Unified Glare Rating (UGR) range from 5-40
	aura light distribution		shine ring		marine grade (AISI 316 stainless steel)
	round wall or ceiling cut-out		integrated shine ring with diffuser		walk on
	square wall or ceiling cut-out		free individual colors 01-29		drive on
	the supplied jig specifies the cutout dimensions		individual colors: 00 (free of charge), 01-25 (extra charge)		Dark Sky Compliance
	minimum distance (meters) lamp - object		luminaire part to be colored (F1)		Americans with Disabilities Act (less than 4" off the wall located between 27"-84" from floor)
	recessed depth		luminaire part to be colored (F2)		lamp protected against explosion
	ceiling thickness in mm		luminaire part to be colored (F3)		blown glass using traditional methods by master glass blower
	ceiling thickness selection		luminaire part to be colored (F4)		acoustic material
	dimmable DP (phase), DV (0-10V), DD (dali), DS (step-dim)		luminaire part to be colored (F5)		protection class I, protection insulation
	included or excluded LED driver/transformer/control gear		color of 3-circuit adaptor		protection class II, protection insulation
	separately switchable		indirect diffuser		ETL Certified to UL and CSA Standards
	sensor		direct diffuser		UL Certified to UL and CSA Standards
	remote control		ball-proof (upon request)		CSA Certified to UL and CSA Standards
	available upon request		accessory		Certified for North American Standards

IP RATING

	protected against ingress of solid bodies greater than 12.5mm (finger)
	protected against ingress of solid bodies greater than 2.5mm protected against sprays of water up to 60 degrees from the vertical (rain)
	protected against ingress of solid bodies greater than 1mm (wire) no protection against the ingress of moisture
	protected against ingress of solid bodies greater than 1mm (wire) protected against sprays of water up to 60 degrees from the vertical (rain)
	protected against ingress of solid bodies greater than 1mm (wire) protected against water splashed from all directions
	protected against limited ingress of dust (wet rooms/covered outdoor areas) protected against water splashed from all directions
	protected against ingress of dust protected against jets of water
	protected against ingress of dust protected against powerful jets of water or heavy seas
	protected against ingress of dust protected against immersion of water between 15cm - 1m for 30 minutes
	protected against ingress of dust protected against immersion of water under pressure for long periods

IK RATING

	protected against 0.14 joules impact (equivalent to 0.25kg mass dropped from 56mm above the surface)
	protected against 0.2 joules impact (equivalent to 0.25kg mass dropped from 80mm above the surface)
	protected against 0.35 joules impact (equivalent to 0.25kg mass dropped from 140mm above the surface)
	protected against 0.5 joules impact (equivalent to 0.25kg mass dropped from 200mm above the surface)
	protected against 0.7 joules impact (equivalent to 0.25kg mass dropped from 280mm above the surface)
	protected against 1 joules impact (equivalent to 0.25kg mass dropped from 400mm above the surface)
	protected against 2 joules impact (equivalent to 0.5kg mass dropped from 400mm above the surface)
	protected against 5 joules impact (equivalent to 1.7kg mass dropped from 300mm above the surface)
	protected against 10 joules impact (equivalent to 5.0kg mass dropped from 200mm above the surface)
	protected against 20 joules impact (equivalent to 5.0kg mass dropped from 400mm above the surface)