

PROJECT	
TYPE	
NOTES	
QUANTITY	
DATE	

A36600-

DESCRIPTION

Groove System - Trimless Profile per Meter - Max 3,00mm / 118 1/8"

GENERAL

Series: Groove
Brand: Prolicht
Division: Architectural
Mounting Type: Trimless
Mounting Location: Ceiling

PHYSICAL

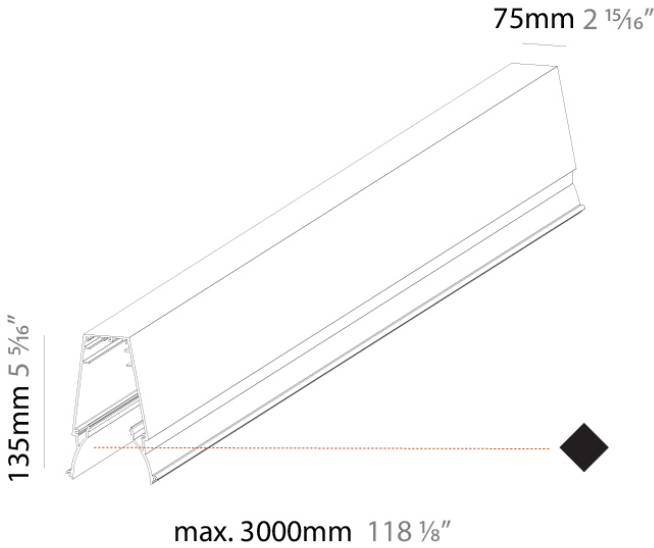
Shape: Oblong
Length (mm): 1000
Length (in): 39 3/8
Width (mm): 89
Width (in): 3 1/2
Height (mm): 135
Height (in): 5 5/16
Weight (kg): 2.3
Weight (lbs): 5.07
Fixture Finish: SSR / BKV / CWI / CRY / HAB / LAG / UFT / ITA / RUA / RUR / MIC / FTG / MYG / TWT / LOD / PUS / FRO / FUP / KIA / POP / BLS / SPG / MEY / GOH / GUM / CHC / COM / ABZ / JAG
Fixture Material: Aluminum

LED

CRI: >90 CRI

RATINGS AND CERTIFICATIONS

Certified By: Certified for North American Standards
IP rating: IP20



A3GRR-TRI-SYS COMPONENTS

A38524-

DESCRIPTION

Grooline Recessed Light Insert for Groove System - 1140mm / 44 7/8" - 20.2W / 12.8W [O/P] (3500K) - LED (Zhaga Standard) - 3000K / 3500K / 4000K

GENERAL

Series: Groove
Brand: Prolicht
Division: Architectural
Mounting Location: Ceiling
Subcategory: Profile

PHYSICAL

Shape: Rectangle
Length (mm): 1140
Length (in): 44 7/8
Width (mm): 36
Width (in): 1 7/16
Height (mm): 37
Height (in): 1 7/16
Light Distribution: Direct
Weight (kg): 1.218
Weight (lbs): 2.69
Diffuser: PMMA - Opal
Fixture Material: Metal

ELECTRICAL

Input Wattage Range: 20 - 29 W
Lamp Type: LED (Zhaga Standard)
Input Wattage (W): 20.2
Total Output Wattage (W): 16 / 12.8 (3500K)
Dimming: 0-10V Dimming / Phase Dimming (120Vac Only)
Driver Included: Yes
Driver Location: Integrated
Driver Type: Constant Current - Universal
Driver Class: Class 2
Input Voltage (V): 120 - 277
Constant Current (mA): 350 / 400 (3500K)

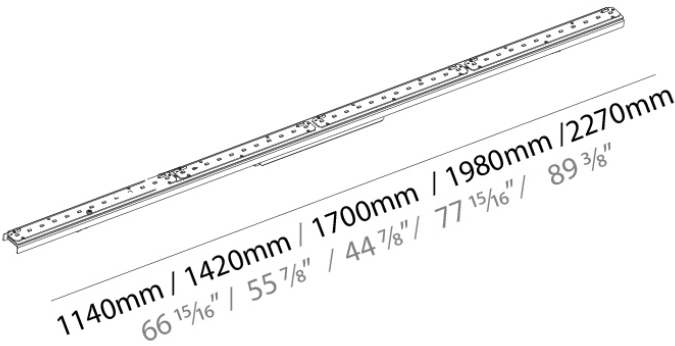
LED

Color Temperature (°K): 3000 / 3500 / 4000
Max. Delivered Lumen (lm): 1370 / 1421 / 1450
Nominal Lumen (lm): 2840 / 2940 / 3000
CRI: >90 CRI
Lamp Life (hrs): 50000

RATINGS AND CERTIFICATIONS

Certified By: Certified for North American Standards
IP rating: IP20

PROJECT	
TYPE	
NOTES	
QUANTITY	
DATE	



A3GRR-TRI-SYS COMPONENTS

A38526-

DESCRIPTION

Grooline Recessed Light Insert for Groove System - 1420mm / 55 7/8" - 25W / 20W [O/P] (3500K) - LED (Zhaga Standard) - 3000K / 3500K / 4000K

GENERAL

Series: Groove
Brand: Prolicht
Division: Architectural
Mounting Location: Ceiling

PHYSICAL

Shape: Rectangle
Length (mm): 1420
Length (in): 55 7/8
Width (mm): 36
Width (in): 1 1/6
Height (mm): 37
Height (in): 1 7/16
Light Distribution: Direct
Weight (kg): 1.454
Weight (lbs): 3.21
Diffuser: PMMA - Opal
Fixture Material: Metal

ELECTRICAL

Input Wattage Range: 20 - 29 W
Lamp Type: LED (Zhaga Standard)
Input Wattage (W): 25.3
Total Output Wattage (W): 20 / 16 (3500K)
Dimming: 0-10V Dimming / Phase Dimming (120Vac Only)
Driver Included: Yes
Driver Location: Integrated
Driver Type: Constant Current - Universal
Driver Class: Class 2
Input Voltage (V): 120 - 277
Constant Current (MA): 350 / 500 (3500K)

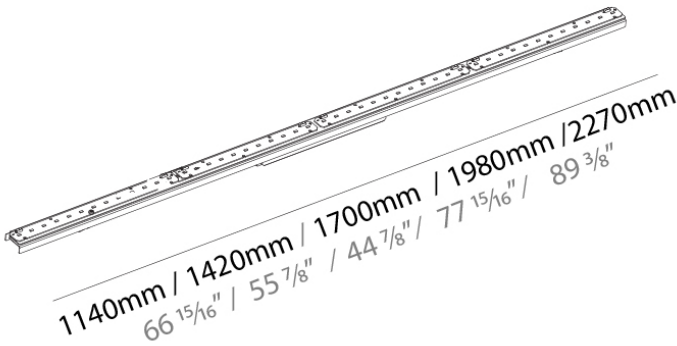
LED

Color Temperature (°K): 3000 / 3500 / 4000
Max. Delivered Lumen (lm): 1710 / 1774 / 1810
Nominal Lumen (lm): 3550 / 3675 / 3750
CRI: >90 CRI
Lamp Life (hrs): 50000

RATINGS AND CERTIFICATIONS

Certified By: Certified for North American Standards
IP rating: IP20

PROJECT	
TYPE	
NOTES	
QUANTITY	
DATE	



A3GRR-TRI-SYS COMPONENTS

A38528-

DESCRIPTION

Grooline Recessed Light Insert for Groove System - 1700mm / 66 15/16" - 30.4W / 19.2W [O/P] (3500K) - LED (Zhaga Standard) - 3000K / 3500K / 4000K

GENERAL

Series: Groove
Brand: Prolicht
Division: Architectural
Mounting Location: Ceiling
Subcategory: Profile

PHYSICAL

Shape: Rectangle
Length (mm): 1700
Length (in): 66 15/16
Width (mm): 36
Width (in): 1 7/16
Height (mm): 37
Height (in): 1 7/16
Light Distribution: Direct
Weight (kg): 1.688
Weight (lbs): 3.72
Diffuser: PMMA - Opal
Fixture Material: Metal

ELECTRICAL

Input Wattage Range: 30 - 49 W
Lamp Type: LED (Zhaga Standard)
Input Wattage (W): 30.4
Total Output Wattage (W): 24 / 19.2 (3500K)
Dimming: 0-10V Dimming / Phase Dimming (120Vac Only)
Driver Included: Yes
Driver Location: Integrated
Driver Type: Constant Current - 120 / 277Vac
Driver Class: Class 2
Input Voltage (V): 120 - 277
Constant Current (mA): 350 / 600 (3500K)

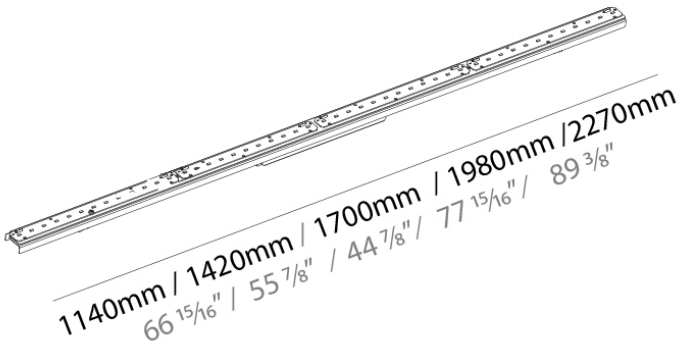
LED

Color Temperature (°K): 3000 / 3500 / 4000
Max. Delivered Lumen (lm): 2050 / 2127 / 2170
Nominal Lumen (lm): 4260 / 4410 / 4500
CRI: >90 CRI
Lamp Life (hrs): 50000

RATINGS AND CERTIFICATIONS

Certified By: Certified for North American Standards
IP rating: IP20

PROJECT	
TYPE	
NOTES	
QUANTITY	
DATE	



A3GRR-TRI-SYS COMPONENTS

A38530-

DESCRIPTION

Grooline Recessed Light Insert for Groove System - 1980mm / 77 15/16" - 35W / 22.4 [O/P] (3500K) - LED (Zhaga Standard) - 3000K / 3500K / 4000K

GENERAL

Series: Groove
Brand: Prolicht
Division: Architectural
Mounting Location: Ceiling
Subcategory: Profile

PHYSICAL

Shape: Rectangle
Length (mm): 1980
Length (in): 77 15/16
Width (mm): 36
Width (in): 1 7/16
Height (mm): 37
Height (in): 1 7/16
Light Distribution: Direct
Weight (kg): 1.922
Weight (lbs): 4.24
Diffuser: PMMA - Opal
Fixture Material: Metal

ELECTRICAL

Input Wattage Range: 30 - 49 W
Lamp Type: LED (Zhaga Standard)
Input Wattage (W): 35.4
Total Output Wattage (W): 28 / 22.4 (35000K)
Dimming: 0-10V Dimming / Phase Dimming (120Vac Only)
Driver Included: Yes
Driver Location: Integrated
Driver Type: Constant Current - 120 / 277Vac
Driver Class: Class 2
Input Voltage (V): 120 - 277
Constant Current (MA): 350 / 700 (3500K)

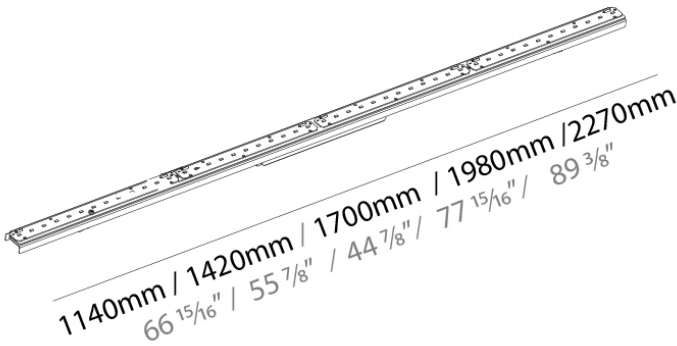
LED

Color Temperature (°K): 3000 / 3500 / 4000
Max. Delivered Lumen (lm): 2400 / 2479 / 2530
Nominal Lumen (lm): 4970 / 5125 / 5250
CRI: >90 CRI
Lamp Life (hrs): 50000

RATINGS AND CERTIFICATIONS

Certified By: Certified for North American Standards
IP rating: IP20

PROJECT	
TYPE	
NOTES	
QUANTITY	
DATE	



A

A3GRR-TRI-SYS COMPONENTS

A38532-

DESCRIPTION

Grooline Recessed Light Insert for Groove System - 2270mm / 89 3/8" - 40W / 25.6W [O/P] (3500K) - LED (Zhaga Standard) - 3000K / 3500K / 4000K

GENERAL

Series: Groove
Brand: Prolicht
Division: Architectural
Mounting Location: Ceiling
Subcategory: Profile

PHYSICAL

Shape: Rectangle
Length (mm): 2270
Length (in): 89 3/8
Width (mm): 36
Width (in): 1 7/16
Height (mm): 37
Height (in): 1 7/16
Light Distribution: Direct
Weight (kg): 2.193
Weight (lbs): 4.84
Diffuser: PMMA - Opal
Fixture Material: Metal

ELECTRICAL

Input Wattage Range: 30 - 49 W
Lamp Type: LED (Zhaga Standard)
Input Wattage (W): 40.5
Total Output Wattage (W): 32 / 25.6 (3500K)
Dimming: 0-10V Dimming / Phase Dimming (120Vac Only)
Driver Included: Yes
Driver Location: Integrated
Driver Type: Constant Current - 120 / 277Vac
Driver Class: Class 2
Input Voltage (V): 120 - 277
Constant Current (mA): 350 / 800 (3500K)

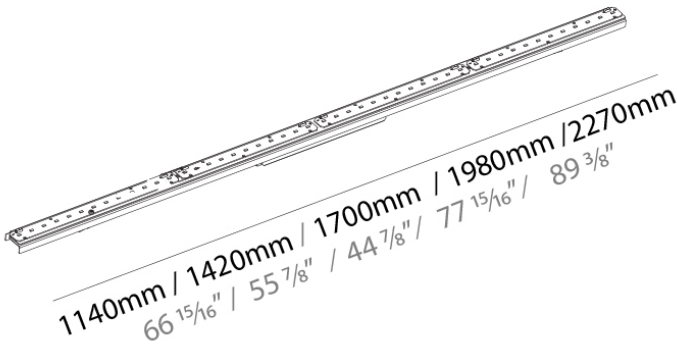
LED

Color Temperature (°K): 3000 / 3500 / 4000
Max. Delivered Lumen (lm): 2740 / 2832 / 2890
Nominal Lumen (lm): 5680 / 5880 / 6000
CRI: >90 CRI
Lamp Life (hrs): 50000

RATINGS AND CERTIFICATIONS

Certified By: Certified for North American Standards
IP rating: IP20

PROJECT	
TYPE	
NOTES	
QUANTITY	
DATE	



A3GRR-TRI-SYS COMPONENTS

A39627-

DESCRIPTION

Groove - Mounting Bracket - indicate ceiling thickness - 10mm / 12.5mm / 15mm

GENERAL

Series: Groove
Brand: Prolicht
Division: Architectural

PHYSICAL

Length (mm): 169
Length (in): 6 5/8
Width (mm): 68
Width (in): 2 11/16
Height (mm): 145
Height (in): 5 11/16
Ceiling Thickness (mm): 10 / 12.5 / 15
Ceiling Thickness (in): 3/8 or 1/2 or 9/16
Weight (kg): 0.2
Weight (lbs): 0.44
Fixture Material: Aluminum

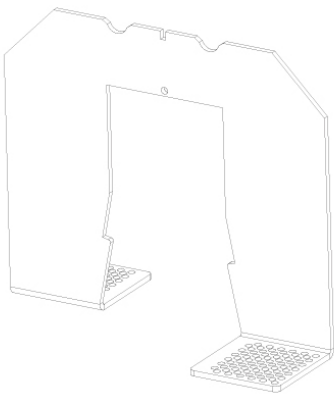
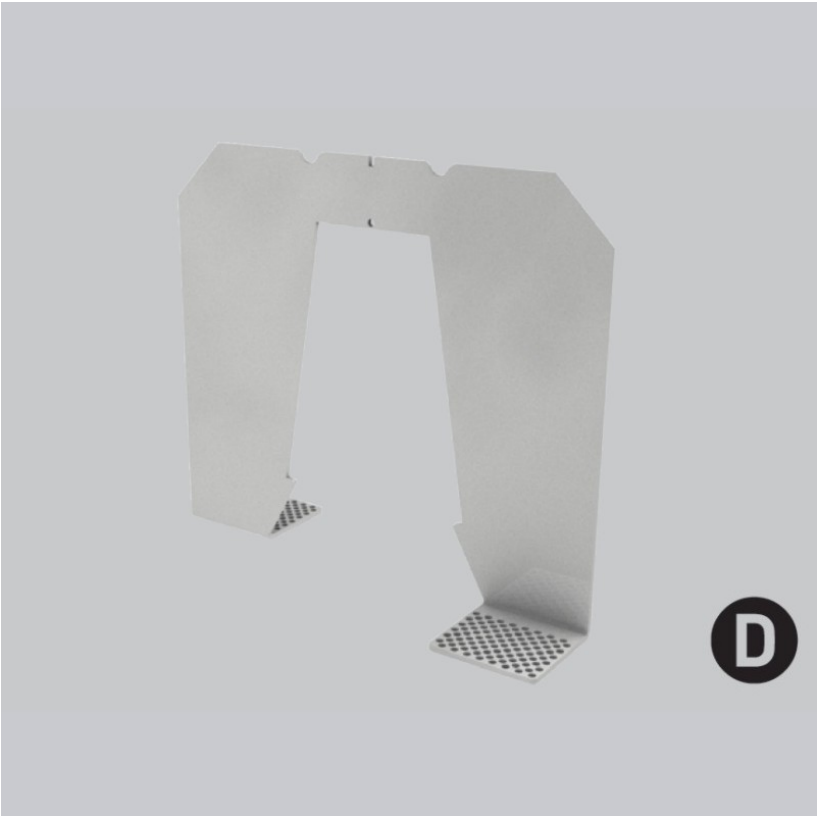
LED

CRI: >90 CRI

RATINGS AND CERTIFICATIONS

Certified By: Certified for North American Standards
IP rating: IP20

PROJECT
TYPE
NOTES
QUANTITY
DATE



distance=max. 1000mm 39 3/8"



A3GRR-TRI-SYS COMPONENTS

A3962800

DESCRIPTION

Groove System - Frame Alignment Kit

GENERAL

Series: Groove
Brand: Prolicht
Division: Architectural

PHYSICAL

Length (mm): 92
Length (in): 3 5/8
Width (mm): 112
Width (in): 4 7/16
Height (mm): 235
Height (in): 9 1/4
Weight (kg): 0.91
Weight (lbs): 2
Fixture Material: Aluminum

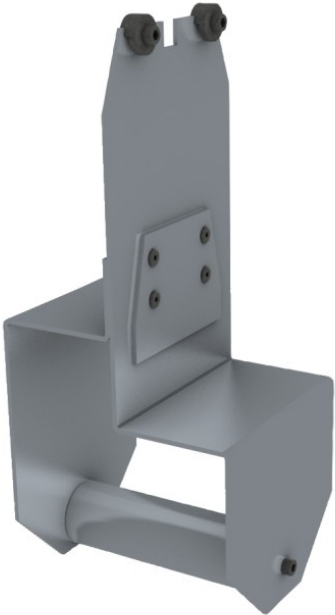
LED

CRI: >90 CRI

RATINGS AND CERTIFICATIONS

Certified By: Certified for North American Standards
IP rating: IP20

PROJECT
TYPE
NOTES
QUANTITY
DATE



A3GRR-TRI-SYS COMPONENTS

A3962900

DESCRIPTION
Groove System - Trimless Linear Coupler

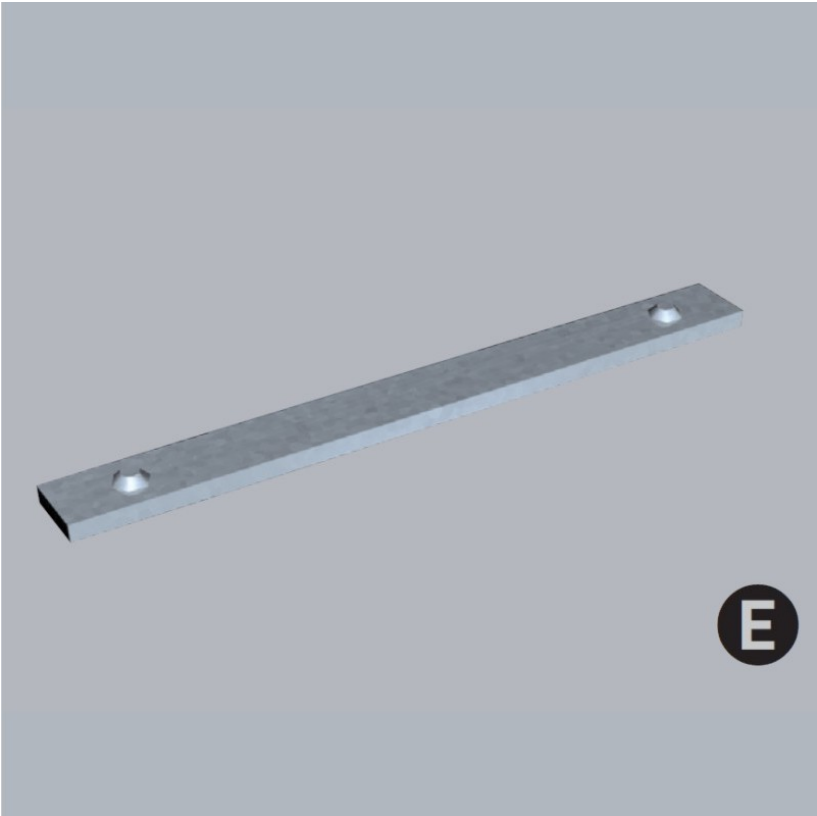
GENERAL
Series: Groove
Brand: Prolicht
Division: Architectural

PHYSICAL
Shape: Rectangle
Length (mm): 80
Length (in): 3 1/8
Width (mm): 8
Width (in): 5/16
Height (mm): 2
Height (in): 1/16
Weight (kg): 0.01
Weight (lbs): 0.22
Fixture Material: Aluminum

LED
CRI: >90 CRI

RATINGS AND CERTIFICATIONS
Certified By: Certified for North American Standards
IP rating: IP20

PROJECT
TYPE
NOTES
QUANTITY
DATE



A3GRR-TRI-SYS COMPONENTS

A3964300

DESCRIPTION

Groove System - Surface/Suspension / Idaho 40 Trimless
System - Flat Opal Diffuser Per Meter - Max 3,000mm / 118 1/8"

GENERAL

Series: Groove
Brand: Prolicht
Division: Architectural

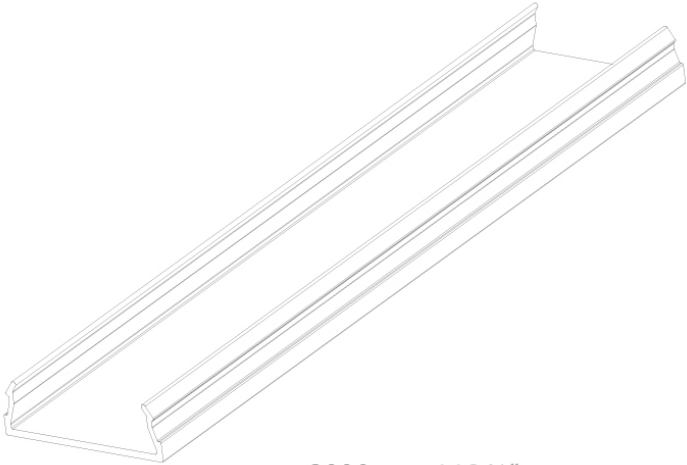
PHYSICAL

Shape: Rectangle
Length (mm): 1000
Length (in): 39 3/8
Width (mm): 42
Width (in): 1 5/8
Height (mm): 14
Height (in): 9/16
Weight (kg): 0.13
Weight (lbs): 0.287
Diffuser: PMMA - Opal

RATINGS AND CERTIFICATIONS

Certified By: Certified for North American Standards
IP rating: IP20

PROJECT
TYPE
NOTES
QUANTITY
DATE



max. 3000mm 118 1/8"



A3GRR-TRI-SYS COMPONENTS

A39914-

DESCRIPTION

Groove System - Trimless Round End Cap

GENERAL

Series: Groove
Brand: Prolicht
Division: Architectural
Mounting Location: Ceiling
Subcategory: Profile

PHYSICAL

Shape: Round
Length (mm): 90
Length (in): 3 9/16
Width (mm): 42
Width (in): 1 5/8
Height (mm): 135
Height (in): 5 5/16
Weight (kg): 0.218
Weight (lbs): 0.48
Fixture Finish: SSR / BKV / CWI / CRY / HAB / LAG / UFT / ITA / RUA /
RUR / MIC / FTG / MYG / TWT / LOD / PUS / FRO / FUP / KIA / POP /
BLS / SPG / MEY / GOH / GUM / CHC / COM / ABZ / JAG
Fixture Material: Aluminum

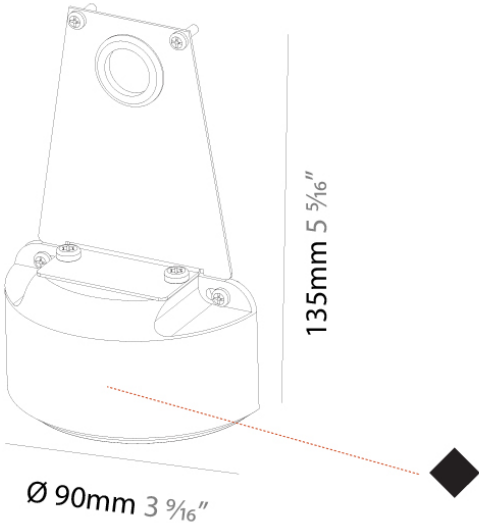
LED

CRI: >90 CRI

RATINGS AND CERTIFICATIONS

Certified By: Certified for North American Standards
IP rating: IP20

PROJECT	
TYPE	
NOTES	
QUANTITY	
DATE	



D = 88



A3GRR-TRI-SYS COMPONENTS

A39916-

DESCRIPTION
Groove System - Trimless Flat End Cap

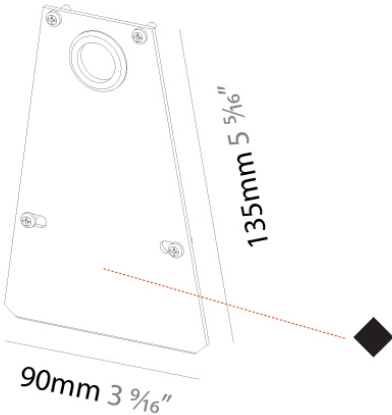
GENERAL
Series: Groove
Brand: Prolicht
Division: Architectural
Mounting Location: Ceiling
Subcategory: Profile

PHYSICAL
Length (mm): 90
Length (in): 3 5/16
Width (mm): 2
Width (in): 1/16
Height (mm): 135
Height (in): 5 5/16
Weight (kg): 0.054
Weight (lbs): 0.119
Fixture Material: Aluminum

LED
CRI: >90 CRI

RATINGS AND CERTIFICATIONS
Certified By: Certified for North American Standards
IP rating: IP20

PROJECT
TYPE
NOTES
QUANTITY
DATE



D = 10



A3GRR-TRI-SYS COMPONENTS

A3993000

DESCRIPTION

Groove System - Surface/Suspension Curved Opal Diffuser Per Meter - Max 3,000mm / 118 1/8"

GENERAL

Series: Groove
Brand: Prolicht
Division: Architectural
Mounting Location: Ceiling
Subcategory: Profile

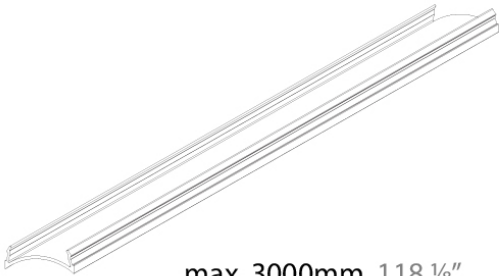
PHYSICAL

Shape: Rectangle
Length (mm): 1000
Length (in): 39 3/8
Width (mm): 42
Width (in): 1 5/8
Height (mm): 14
Height (in): 9/16
Weight (kg): 0.2
Weight (lbs): 0.44
Diffuser: Opal - PMMA

RATINGS AND CERTIFICATIONS

Certified By: CSA Certified to UL and CSA Standards
IP rating: IP20

PROJECT
TYPE
NOTES
QUANTITY
DATE



max. 3000mm 118 1/8"



A3GRR-TRI-SYS COMPONENTS

A39931-

DESCRIPTION

Groove System - Cap Profile per Meter - Max 3,000mm / 118 1/8"

GENERAL

Series: Groove
Brand: Prolicht
Division: Architectural
Mounting Location: Ceiling
Subcategory: Profile

PHYSICAL

Shape: Rectangle
Length (mm): 1000
Length (in): 39 3/8
Width (mm): 42
Width (in): 1 5/8
Height (mm): 14
Height (in): 9/16
Weight (kg): 0.37
Weight (lbs): 0.82
Fixture Finish: SSR / BKV / CWI / CRY / HAB / LAG / UFT / ITA / RUA /
RUR / MIC / FTG / MYG / TWT / LOD / PUS / FRO / FUP / KIA / POP /
BLS / SPG / MEY / GOH / GUM / CHC / COM / ABZ / JAG
Fixture Material: Aluminum

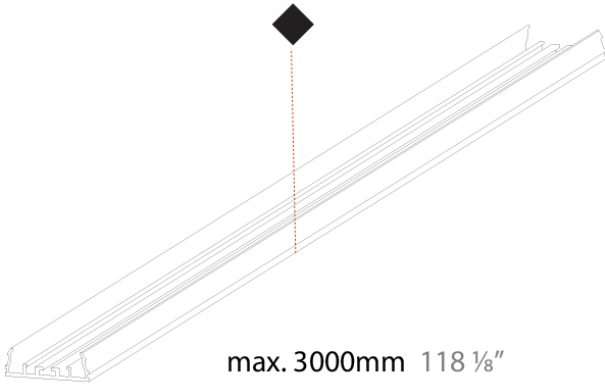
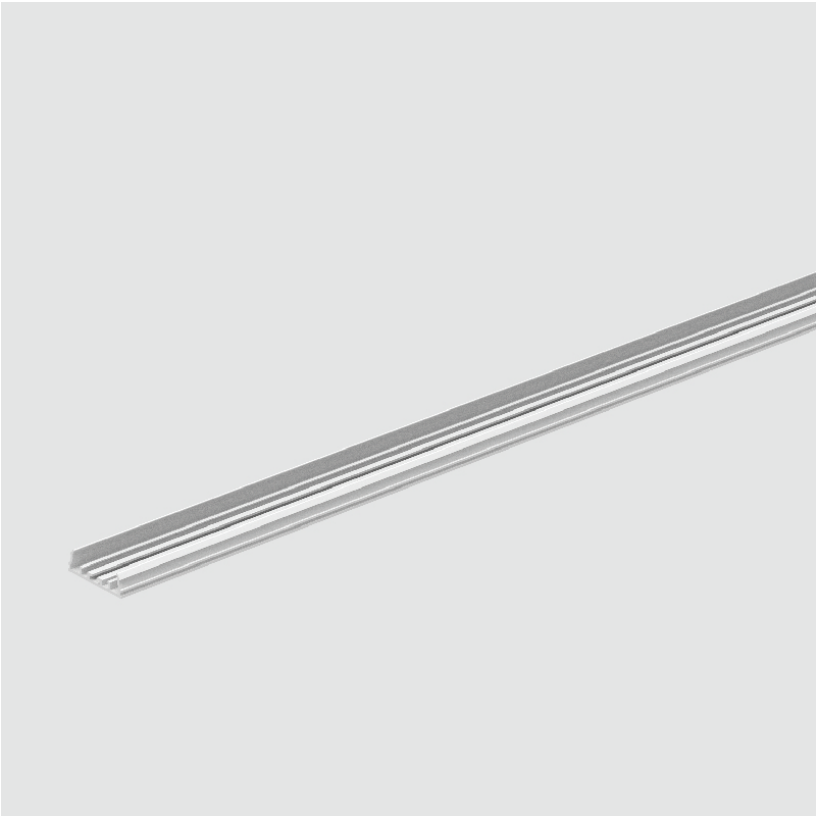
LED

CRI: >90 CRI

RATINGS AND CERTIFICATIONS

Certified By: Certified for North American Standards
IP rating: IP20

PROJECT
TYPE
NOTES
QUANTITY
DATE



LEGEND

	floor-mounted		pivotal		special LED (upon request) RGB, RGBW, tunable, gold+, meat+, art+, fashion+
	wall and ceiling: recessed and surface mounted		rotating		warm dim / natural dimming LED
	ceiling-mounted and wall-mounted		illuminate tilted		rechargeable battery powered
	wall-mounted		color of suspension cable		fixture with natural vivid LED (upon request)
	omni-directional light distribution		length of suspension cable		color rendering index
	direct light distribution		reflector degree selection		color temperature
	direct/indirect light distribution		super spot		lumen (luminous flux)
	indirect light distribution		lens		efficacy (lumens per watt)
	asymmetric light distribution		lens pack		Unified Glare Rating (UGR) range from 5-40
	aura light distribution		shine ring		marine grade (AISI 316 stainless steel)
	round wall or ceiling cut-out		integrated shine ring with diffuser		walk on
	square wall or ceiling cut-out		free individual colors 01-29		drive on
	the supplied jig specifies the cutout dimensions		individual colors: 00 (free of charge), 01-25 (extra charge)		Dark Sky Compliance
	minimum distance (meters) lamp - object		luminaire part to be colored (F1)		Americans with Disabilities Act (less than 4" off the wall located between 27"-84" from floor)
	recessed depth		luminaire part to be colored (F2)		lamp protected against explosion
	ceiling thickness in mm		luminaire part to be colored (F3)		blown glass using traditional methods by master glass blower
	ceiling thickness selection		luminaire part to be colored (F4)		acoustic material
	dimmable DP (phase), DV (0-10V), DD (dali), DS (step-dim)		luminaire part to be colored (F5)		protection class I, protection insulation
	included or excluded LED driver/transformer/control gear		color of 3-circuit adaptor		protection class II, protection insulation
	separately switchable		indirect diffuser		ETL Certified to UL and CSA Standards
	sensor		direct diffuser		UL Certified to UL and CSA Standards
	remote control		ball-proof (upon request)		CSA Certified to UL and CSA Standards
	available upon request		accessory		Certified for North American Standards

IP RATING

	protected against ingress of solid bodies greater than 12.5mm (finger)
	protected against ingress of solid bodies greater than 2.5mm protected against sprays of water up to 60 degrees from the vertical (rain)
	protected against ingress of solid bodies greater than 1mm (wire) no protection against the ingress of moisture
	protected against ingress of solid bodies greater than 1mm (wire) protected against sprays of water up to 60 degrees from the vertical (rain)
	protected against ingress of solid bodies greater than 1mm (wire) protected against water splashed from all directions
	protected against limited ingress of dust (wet rooms/covered outdoor areas) protected against water splashed from all directions
	protected against ingress of dust protected against jets of water
	protected against ingress of dust protected against powerful jets of water or heavy seas
	protected against ingress of dust protected against immersion of water between 15cm - 1m for 30 minutes
	protected against ingress of dust protected against immersion of water under pressure for long periods

IK RATING

	protected against 0.14 joules impact (equivalent to 0.25kg mass dropped from 56mm above the surface)
	protected against 0.2 joules impact (equivalent to 0.25kg mass dropped from 80mm above the surface)
	protected against 0.35 joules impact (equivalent to 0.25kg mass dropped from 140mm above the surface)
	protected against 0.5 joules impact (equivalent to 0.25kg mass dropped from 200mm above the surface)
	protected against 0.7 joules impact (equivalent to 0.25kg mass dropped from 280mm above the surface)
	protected against 1 joules impact (equivalent to 0.25kg mass dropped from 400mm above the surface)
	protected against 2 joules impact (equivalent to 0.5kg mass dropped from 400mm above the surface)
	protected against 5 joules impact (equivalent to 1.7kg mass dropped from 300mm above the surface)
	protected against 10 joules impact (equivalent to 5.0kg mass dropped from 200mm above the surface)
	protected against 20 joules impact (equivalent to 5.0kg mass dropped from 400mm above the surface)