

A3ID40-SUS-SYS COMPONENTS SUSPENSION

A300095-

DESCRIPTION

Idaho 40 / Hypro 40 - Suspension System Profile per meter - Max 3000mm / 118 1/8"

GENERAL

Series: Idaho  
Subseries: Idaho 40  
Brand: Prolicht  
Division: Architectural  
Mounting Type: Suspension  
Mounting Location: Ceiling  
Subcategory: Profile

PHYSICAL

Shape: Rectangle  
Length (mm): 1000  
Length (in): 39 3/8  
Width (mm): 38  
Width (in): 1 1/2  
Height (mm): 76  
Height (in): 3  
Weight (kg): 0.959  
Weight (lbs): 2.11  
Fixture Finish: SSR / BKV / CWI / CRY / HAB / LAG / UFT / ITA / RUA / RUR / MIC / FTG / MYG / TWT / LOD / PUS / FRO / FUP / KIA / POP / BLS / SPG / MEY / GOH / GUM / CHC / COM / ABZ / JAG  
Fixture Material: Aluminum

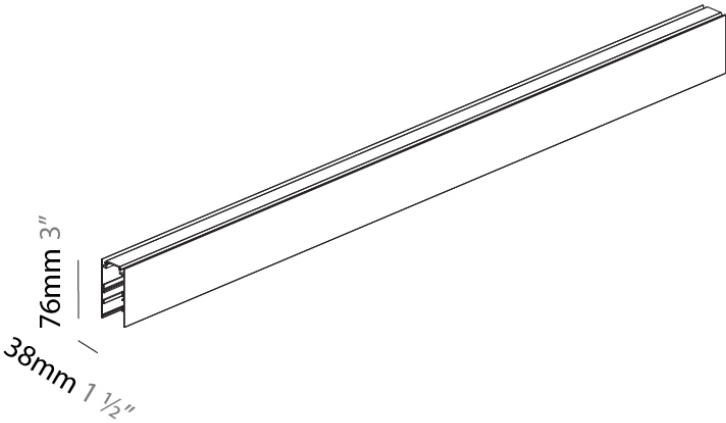
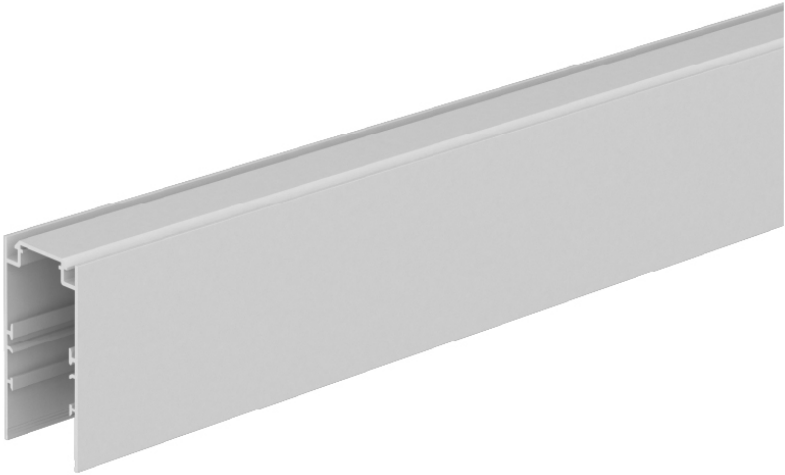
ELECTRICAL

Lamp Type: LED (Zhaga Standard)

RATINGS AND CERTIFICATIONS

Certified By: Certified for North American Standards  
IP rating: IP20

PROJECT
TYPE
NOTES
QUANTITY
DATE



A3ID40-SUS-SYS COMPONENTS

A380114

**DESCRIPTION**  
Idaho / Hypro 40 System - Per Meter - Opal Diffuser

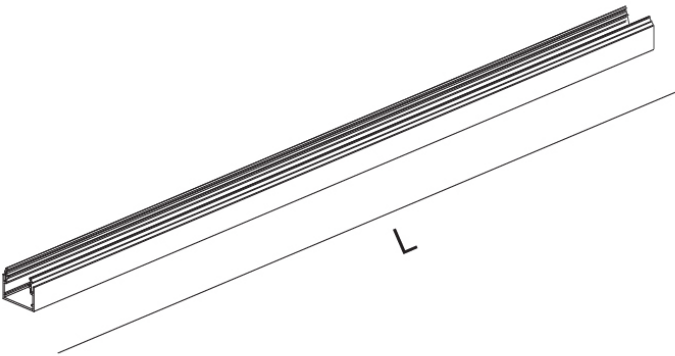
**GENERAL**  
Series: Hypro  
Subseries: Hypro 40  
Brand: Prolicht  
Division: Architectural

**PHYSICAL**  
Shape: Rectangle  
Length (mm): Max. 3000  
Length (in): Max. 118 1/9  
Width (mm): 35  
Width (in): 1 3/8  
Height (mm): 28  
Height (in): 1 1/8  
Diffuser: PMMA - Opal Diffuser - Per Meter  
Fixture Material: Aluminum

**ELECTRICAL**  
Lamp Type: LED (Zhaga Standard)

**RATINGS AND CERTIFICATIONS**  
Certified By: Certified for North American Standards  
IP rating: IP20

PROJECT
TYPE
NOTES
QUANTITY
DATE



A3ID40-SUS-SYS COMPONENTS

A380115

DESCRIPTION

Idaho / Hypro 40 System - 1128mm - Opal Diffuser

GENERAL

Series: Hypro  
Subseries: Hypro 40  
Brand: Prolicht  
Division: Architectural

PHYSICAL

Shape: Rectangle  
Length (mm): 1128  
Length (in): 44 7/16  
Width (mm): 35  
Width (in): 1 3/8  
Height (mm): 28  
Height (in): 1 1/8  
Weight (kg): 0.221  
Weight (lbs): 0.49  
Diffuser: PMMA - Opal Diffuser - Per Meter  
Fixture Material: Aluminum

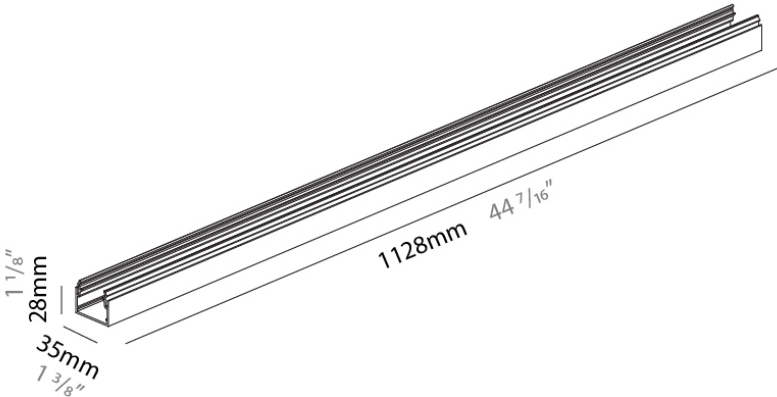
ELECTRICAL

Lamp Type: LED (Zhaga Standard)

RATINGS AND CERTIFICATIONS

Certified By: Certified for North American Standards  
IP rating: IP20

PROJECT
TYPE
NOTES
QUANTITY
DATE



A3ID40-SUS-SYS COMPONENTS

A380116

**DESCRIPTION**  
Idaho / Hypro 40 System - Per Meter - Micro - Prism - Diffuser

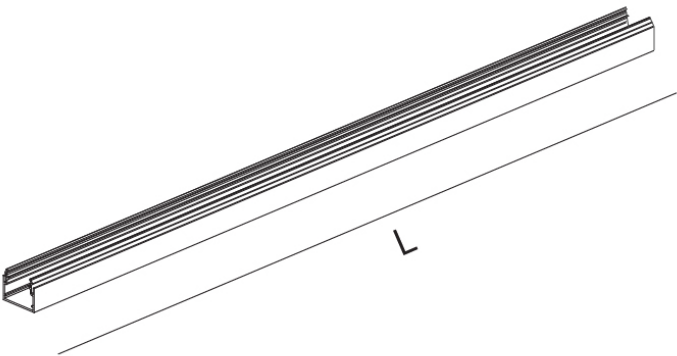
**GENERAL**  
Series: Hypro  
Subseries: Hypro 40  
Brand: Prolicht  
Division: Architectural

**PHYSICAL**  
Shape: Rectangle  
Width (mm): 35  
Width (in): 1 3⁄8  
Height (mm): 28  
Height (in): 1 1⁄8  
Diffuser: PMMA - Mircro Prism - Diffuser - Per Meter  
Fixture Material: Aluminum

**ELECTRICAL**  
Lamp Type: LED (Zhaga Standard)

**RATINGS AND CERTIFICATIONS**  
Certified By: Certified for North American Standards  
IP rating: IP20

PROJECT
TYPE
NOTES
QUANTITY
DATE





A3ID40-SUS-SYS COMPONENTS

A380117

**DESCRIPTION**  
Idaho / Hypro 40 System - 1128mm - Micro - Prism - Diffuser

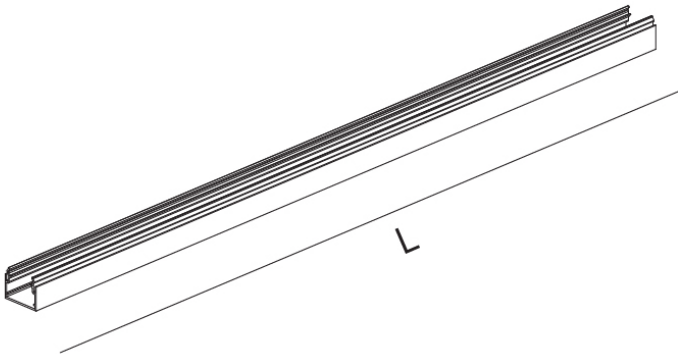
**GENERAL**  
Series: Hypro  
Subseries: Hypro 40  
Brand: Prolicht  
Division: Architectural

**PHYSICAL**  
Shape: Rectangle  
Length (mm): 1128  
Length (in): 44 7/16  
Width (mm): 35  
Width (in): 1 3/8  
Height (mm): 28  
Height (in): 1 3/8  
Diffuser: PMMA - Mircro Prism - Diffuser - Per Meter  
Fixture Material: Aluminum

**ELECTRICAL**  
Lamp Type: LED (Zhaga Standard)

**RATINGS AND CERTIFICATIONS**  
Certified By: Certified for North American Standards  
IP rating: IP20

PROJECT
TYPE
NOTES
QUANTITY
DATE



A3ID40-SUS-SYS COMPONENTS

A380144-

DESCRIPTION

Idaline - Idaho 40 Profile Insert - 1128mm - 26.4W LED (Zhaga Standard) - 2700K / 3000K / 4000K

GENERAL

Series: Idaho  
Subseries: Idaho 40  
Brand: Prolicht  
Division: Architectural

PHYSICAL

Shape: Rectangle  
Length (mm): 1128  
Length (in): 44 7/16  
Width (mm): 29  
Width (in): 1 1/8  
Height (mm): 50  
Height (in): 1 15/16  
Fixture Material: Aluminum

ELECTRICAL

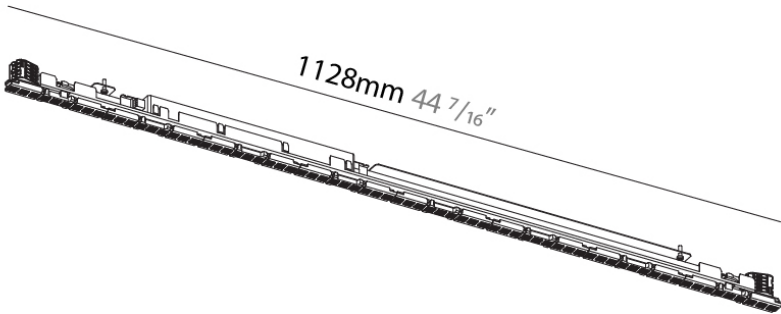
Input Wattage Range: 20 - 29 W  
Lamp Type: LED (Zhaga Standard)  
Input Wattage (W): 26.4  
Dimming: Non-Dimming / Phase Dimming (120Vac only) / 0-10V Dimming  
Driver Included: Yes  
Driver Location: Integrated  
Driver Type: Constant Current - Universal  
Driver Class: Class 1  
Input Voltage (V): 120  
Constant Current (mA): 350

LED

Delivered Lumen Range: 2000 - 2999 lm  
Color Temperature (°K): 2700 / 3000 / 4000  
Max. Delivered Lumen (lm): 2239 / 2388 / 2488  
CRI: >80 CRI  
Lamp Life (hrs): 50000

RATINGS AND CERTIFICATIONS

Certified By: Certified for North American Standards  
IP rating: IP20



PROJECT
TYPE
NOTES
QUANTITY
DATE

A3ID40-SUS-SYS COMPONENTS

A38870

DESCRIPTION

Idaho / Hypro 40 Recessed System Linear Coupler

GENERAL

Brand: Prolicht  
Division: Architectural

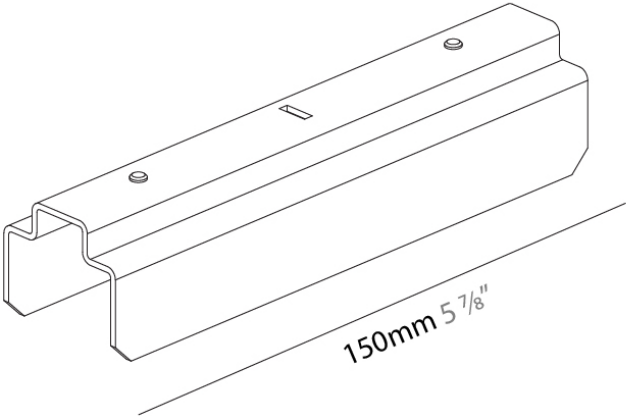
PHYSICAL

Shape: Rectangle  
Length (mm): 150  
Length (in): 5 7/8  
Width (mm): 35  
Width (in): 1 3/8  
Height (mm): 33  
Height (in): 1 5/16  
Weight (kg): 0.167  
Weight (lbs): 0.37  
Fixture Material: Aluminum

RATINGS AND CERTIFICATIONS

Certified By: Certified for North American Standards  
IP rating: IP20

PROJECT
TYPE
NOTES
QUANTITY
DATE



PROJECT	
TYPE	
NOTES	
QUANTITY	
DATE	

A38876

DESCRIPTION

Idaho / Hypro 40 Recessed System Central Feed

GENERAL

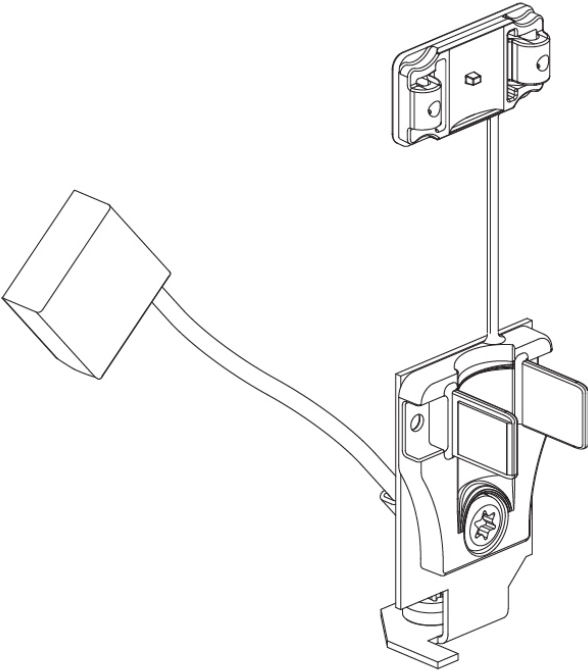
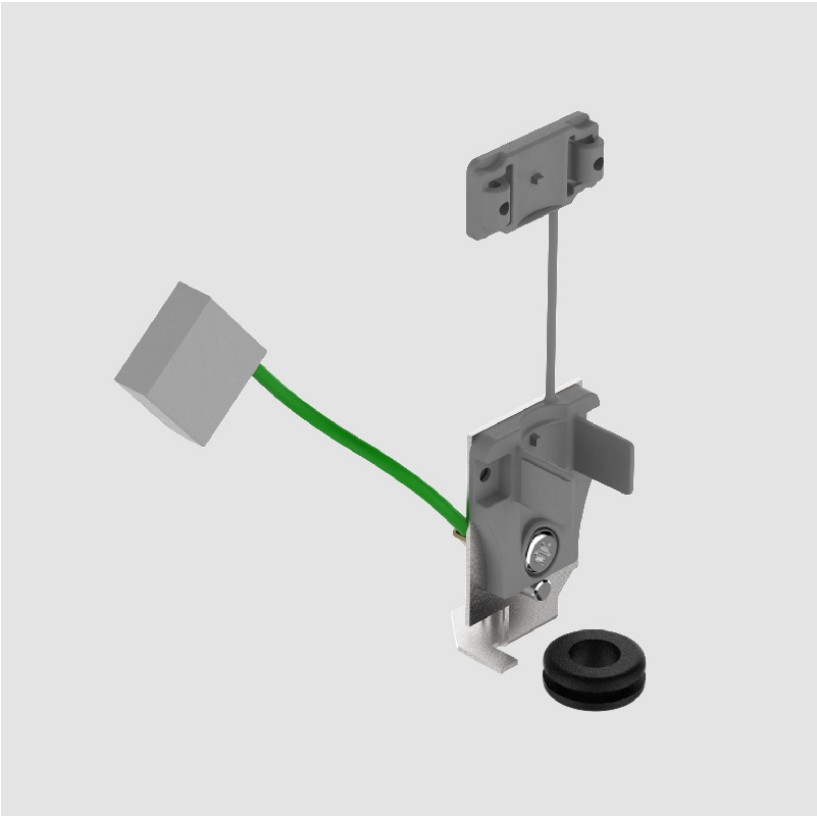
Brand: Prolicht  
Division: Architectural

PHYSICAL

Length (mm): 31  
Length (in): 1 ¼  
Width (mm): 27  
Width (in): 1 ⅛  
Height (mm): 45  
Height (in): 1 ¾  
Weight (kg): 0.046  
Weight (lbs): 0.10  
Fixture Material: Aluminum

RATINGS AND CERTIFICATIONS

Certified By: Certified for North American Standards  
IP rating: IP20



A3ID40-SUS-SYS COMPONENTS

PROJECT	
TYPE	
NOTES	
QUANTITY	
DATE	

A38877

DESCRIPTION

Idaho / Hypro 40 Recessed System - Cable Holder

GENERAL

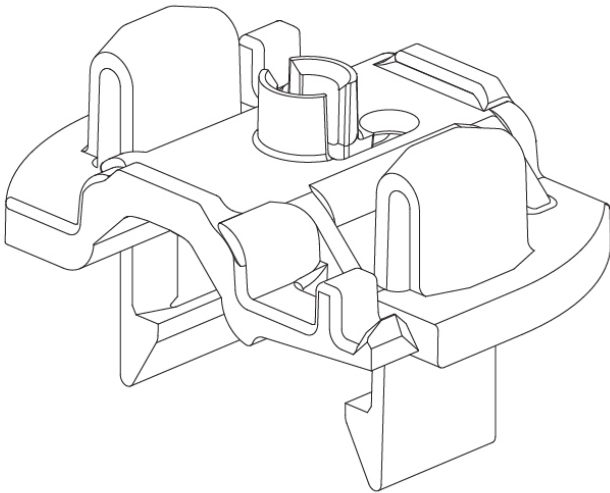
Brand: Prolicht  
Division: Architectural

PHYSICAL

Length (mm): 25  
Length (in): 1  
Width (mm): 36  
Width (in): 1 7/16  
Height (mm): 22  
Height (in): 7/8  
Weight (kg): 0.004  
Weight (lbs): 0.008  
Fixture Material: Aluminum

RATINGS AND CERTIFICATIONS

Certified By: Certified for North American Standards  
IP rating: IP20



A3ID40-SUS-SYS COMPONENTS

A38878-

DESCRIPTION

LED (Zhaga Standard) Linear Insert - Hypro 40 Profile Insert - 16.5W - 2700K / 3000K / 3500K / 4000K

GENERAL

Brand: Prolicht  
Division: Architectural

PHYSICAL

Length (mm): 705  
Length (in): 27 3/4  
Width (mm): 29  
Width (in): 1 1/8  
Height (mm): 50  
Height (in): 1 15/16  
Light Distribution: Direct  
Weight (kg): 0.64  
Weight (lbs): 1.41  
Fixture Material: Metal

ELECTRICAL

Input Wattage Range: 10 - 19 W  
Lamp Type: LED (Zhaga Standard)  
Input Wattage (W): 16.5  
Total Output Wattage (W): 15  
Dimming: Non-Dimmable / 0-10V Dimming  
Driver Included: Yes  
Driver Location: Integrated  
Driver Type: Constant Current - 120Vac  
Driver Class: Class 2  
Input Voltage (V): 120  
Constant Current (mA): 350

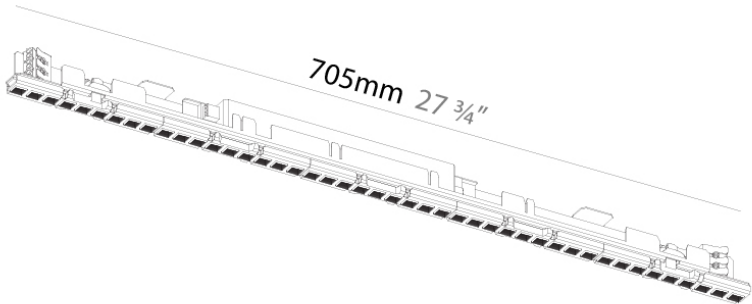
LED

Delivered Lumen Range: 1000 - 1999 lm  
Color Temperature (°K): 2700 / 3000 / 3500 / 4000  
Max. Delivered Lumen (lm): 1400 / 1490 / 1529 / 1560  
Nominal Lumen (lm): 2250 / 2400 / 2450 / 2500  
CRI: >80 CRI  
Lamp Life (hrs): 50000

RATINGS AND CERTIFICATIONS

Certified By: Certified for North American Standards  
IP rating: IP20

PROJECT
TYPE
NOTES
QUANTITY
DATE



A3ID40-SUS-SYS COMPONENTS

A38879-

DESCRIPTION

LED (Zhaga Standard) Linear Insert - Hypro 40 Profile Insert - 35.6W LED (Zhaga Standard) - 2700K / 3000K / 3500K / 4000K

GENERAL

Brand: Prolicht  
Division: Architectural

PHYSICAL

Length (mm): 1408  
Length (in): 55 7/16  
Width (mm): 29  
Width (in): 1 1/8  
Height (mm): 50  
Height (in): 1 15/16  
Light Distribution: Direct  
Weight (kg): 1.136  
Weight (lbs): 2.5  
Fixture Material: Metal

ELECTRICAL

Input Wattage Range: 30 - 49 W  
Lamp Type: LED (Zhaga Standard)  
Input Wattage (W): 35.6  
Total Output Wattage (W): 30  
Dimming: Non-Dimmable / 0-10V Dimming  
Driver Included: Yes  
Driver Location: Integrated  
Driver Type: Constant Current - 120Vac  
Driver Class: Class 1 and Class 2  
Input Voltage (V): 120  
Constant Current (mA): 350

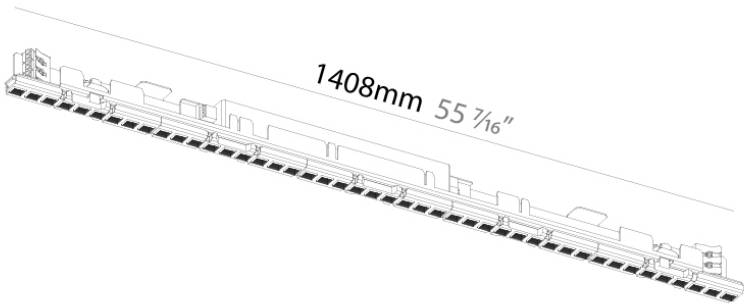
LED

Delivered Lumen Range: 2000 - 3999 lm  
Color Temperature (°K): 2700 / 3000 / 3500 / 4000  
Max. Delivered Lumen (lm): 2800 / 2990 / 3048 / 3110  
Nominal Lumen (lm): 4500 / 4800 / 4900 / 5000  
CRI: >80 CRI  
Lamp Life (hrs): 50000

RATINGS AND CERTIFICATIONS

Certified By: Certified for North American Standards  
IP rating: IP20

PROJECT
TYPE
NOTES
QUANTITY
DATE



A3ID40-SUS-SYS COMPONENTS

A38880

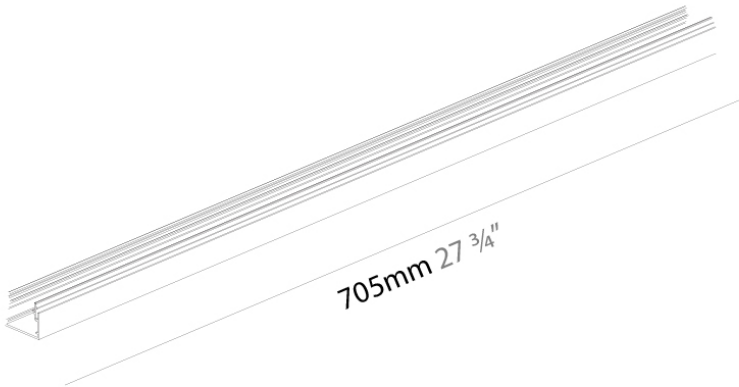
**DESCRIPTION**  
Idaho 40 / Hypro 40 - System - 705mm Opal Diffuser

**GENERAL**  
Brand: Prolicht  
Division: Architectural

**PHYSICAL**  
Shape: Rectangle  
Length (mm): 705  
Length (in): 27 3/4  
Width (mm): 35  
Width (in): 1 3/8  
Height (mm): 28  
Height (in): 1 1/8  
Weight (kg): 0.138  
Weight (lbs): 0.3  
Diffuser: PMMA - Opal

**RATINGS AND CERTIFICATIONS**  
Certified By: Certified for North American Standards  
IP rating: IP20

PROJECT
TYPE
NOTES
QUANTITY
DATE





A3ID40-SUS-SYS COMPONENTS

A38881

DESCRIPTION

Idaho / Hypro 40 System - 1408mm Opal Diffuser

GENERAL

Brand: Prolicht  
Division: Architectural

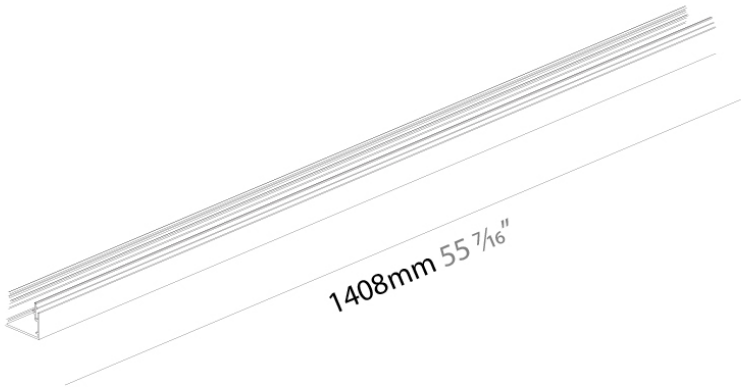
PHYSICAL

Shape: Rectangle  
Length (mm): 1408  
Length (in): 55 7/16  
Width (mm): 35  
Width (in): 1 3/8  
Height (mm): 28  
Height (in): 1 1/8  
Weight (kg): 0.276  
Weight (lbs): 0.61

RATINGS AND CERTIFICATIONS

Certified By: Certified for North American Standards  
IP rating: IP20

PROJECT
TYPE
NOTES
QUANTITY
DATE



A3ID40-SUS-SYS COMPONENTS

A38882

DESCRIPTION

Idaho 40 / Hypro 40 - System - 2113mm Opal Diffuser

GENERAL

Brand: Prolicht  
Division: Architectural

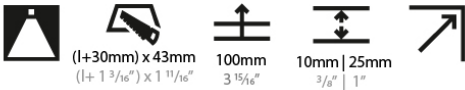
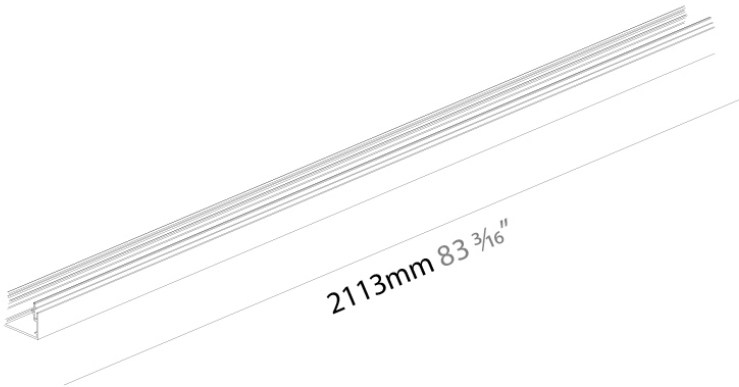
PHYSICAL

Shape: Rectangle  
Length (mm): 2113  
Length (in): 83 3/16  
Width (mm): 35  
Width (in): 1 3/8  
Height (mm): 28  
Height (in): 1 1/8  
Weight (kg): 0.41  
Weight (lbs): 0.9

RATINGS AND CERTIFICATIONS

Certified By: Certified for North American Standards  
IP rating: IP20

PROJECT
TYPE
NOTES
QUANTITY
DATE



A3ID40-SUS-SYS COMPONENTS

A38883

DESCRIPTION

Idaho 40 / Hypro 40 - System - 2815mm Opal Diffuser

GENERAL

Brand: Prolicht  
Division: Architectural

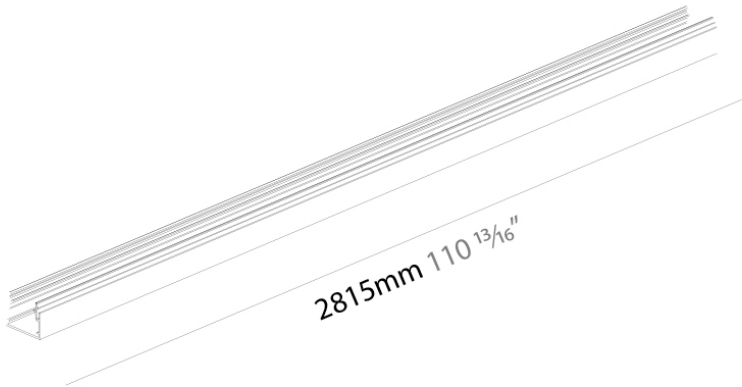
PHYSICAL

Shape: Rectangle  
Length (mm): 2815  
Length (in): 110 13/16  
Width (mm): 35  
Width (in): 1 3/8  
Height (mm): 28  
Height (in): 1 1/8  
Weight (kg): 0.551  
Weight (lbs): 1.215

RATINGS AND CERTIFICATIONS

Certified By: Certified for North American Standards  
IP rating: IP20

PROJECT
TYPE
NOTES
QUANTITY
DATE



A3ID40-SUS-SYS COMPONENTS

A38884

DESCRIPTION

Idaho 40 / Hypro 40 - Recessed System - 705mm Micro Prism Diffuser

GENERAL

Brand: Prolicht  
Division: Architectural

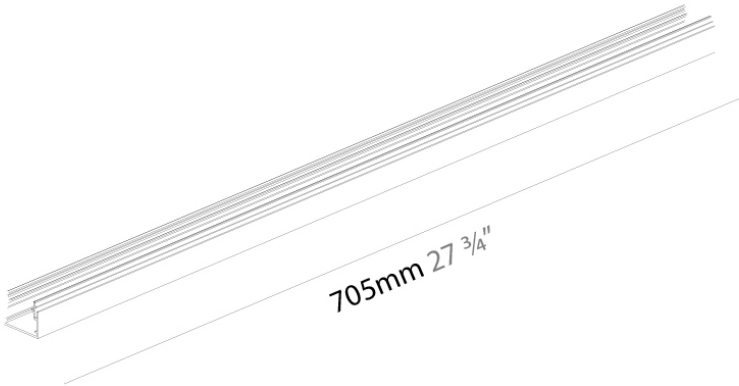
PHYSICAL

Shape: Rectangle  
Length (mm): 705  
Length (in): 27 3/4  
Width (mm): 35  
Width (in): 1 3/8  
Height (mm): 28  
Height (in): 1 1/8  
Weight (kg): 0.2  
Weight (lbs): 0.44  
Diffuser: PMMA - Micro-Prism

RATINGS AND CERTIFICATIONS

Certified By: Certified for North American Standards  
IP rating: IP20

PROJECT
TYPE
NOTES
QUANTITY
DATE



A3ID40-SUS-SYS COMPONENTS

A38885

DESCRIPTION

Idaho 40 / Hypro 40 - Recessed System - 1408mm Micro Prism Diffuser

GENERAL

Brand: Prolicht  
Division: Architectural

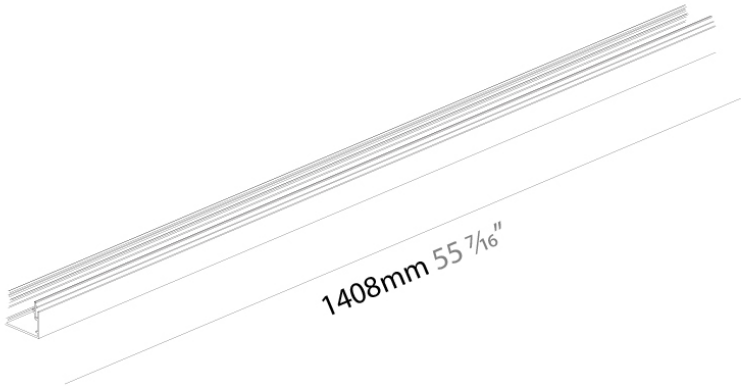
PHYSICAL

Shape: Rectangle  
Length (mm): 1408  
Length (in): 55 7/16  
Width (mm): 35  
Width (in): 1 3/8  
Height (mm): 28  
Height (in): 1 1/8  
Weight (kg): 0.4  
Weight (lbs): 0.88  
Diffuser: PMMA - Micro-Prism

RATINGS AND CERTIFICATIONS

Certified By: Certified for North American Standards  
IP rating: IP20

PROJECT
TYPE
NOTES
QUANTITY
DATE



PROJECT	
TYPE	
NOTES	
QUANTITY	
DATE	

A38886

DESCRIPTION

Idaho 40 / Hypro 40 - Recessed System - 2113mm Micro Prism Diffuser

GENERAL

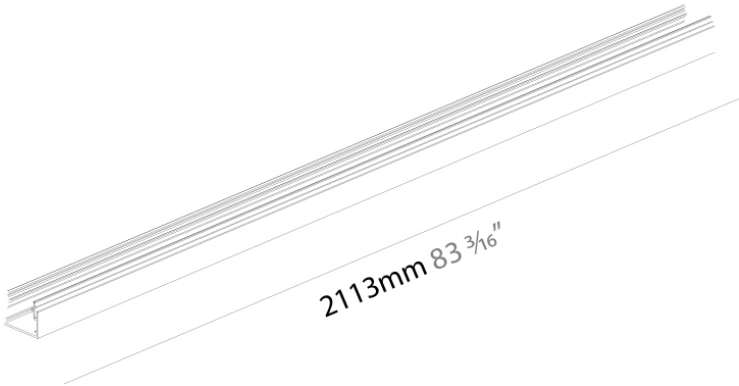
Brand: Prolicht  
Division: Architectural

PHYSICAL

Shape: Rectangle  
Length (mm): 2113  
Length (in): 38 3/16  
Width (mm): 35  
Width (in): 1 3/8  
Height (mm): 28  
Height (in): 1 1/8  
Weight (kg): 0.599  
Weight (lbs): 1 5/16  
Diffuser: PMMA - Micro-Prism

RATINGS AND CERTIFICATIONS

Certified By: Certified for North American Standards  
IP rating: IP20



A3ID40-SUS-SYS COMPONENTS

A38887

DESCRIPTION

Idaho 40 / Hypro 40 - Recessed System - 2815mm Micro Prism Diffuser

GENERAL

Brand: Prolicht  
Division: Architectural

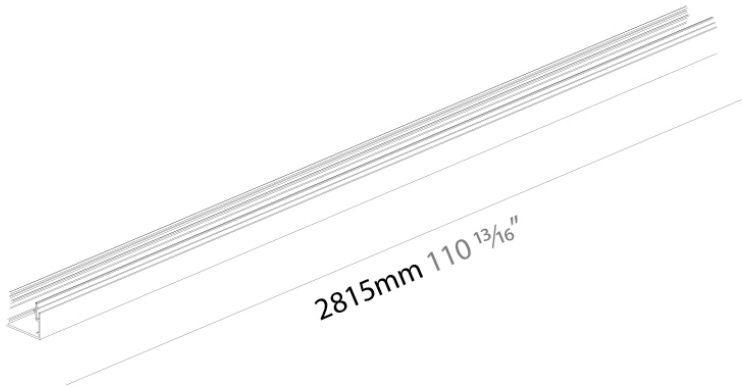
PHYSICAL

Length (mm): 2815  
Length (in): 110 13/16  
Width (mm): 35  
Width (in): 1 3/8  
Height (mm): 28  
Height (in): 1 3/8  
Weight (kg): 0.798  
Weight (lbs): 1.76  
Diffuser: PMMA - Micro-Prism

RATINGS AND CERTIFICATIONS

Certified By: Certified for North American Standards  
IP rating: IP20

PROJECT
TYPE
NOTES
QUANTITY
DATE



A3ID40-SUS-SYS COMPONENTS

A38892

DESCRIPTION

Idaho / Hypro 40 Recessed System - 1000mm Black Cover

GENERAL

Series: Hypro  
Subseries: Hypro 40  
Brand: Prolicht  
Division: Architectural

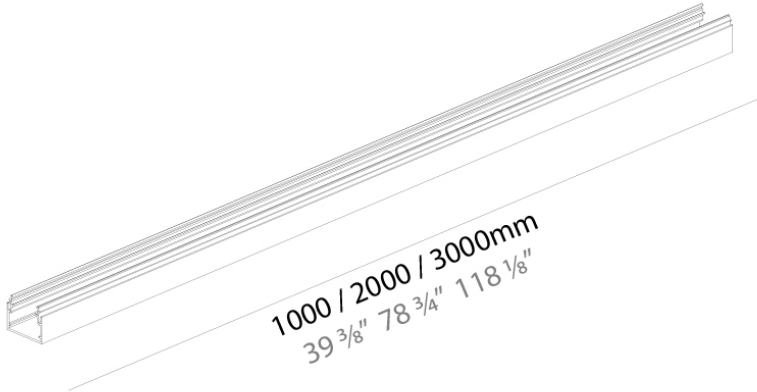
PHYSICAL

Shape: Rectangle  
Length (mm): 1000  
Length (in): 39 3/8  
Width (mm): 35  
Width (in): 1 3/8  
Height (mm): 28  
Height (in): 1 1/8  
Weight (kg): 0.194  
Weight (lbs): 0.428  
Fixture Material: Aluminum

RATINGS AND CERTIFICATIONS

Certified By: Certified for North American Standards  
IP rating: IP20

PROJECT
TYPE
NOTES
QUANTITY
DATE





A3ID40-SUS-SYS COMPONENTS

A38893

DESCRIPTION

Idaho / Hypro 40 Recessed System - 2000mm Black Cover

GENERAL

Series: Hypro  
Subseries: Hypro 40  
Brand: Prolicht  
Division: Architectural

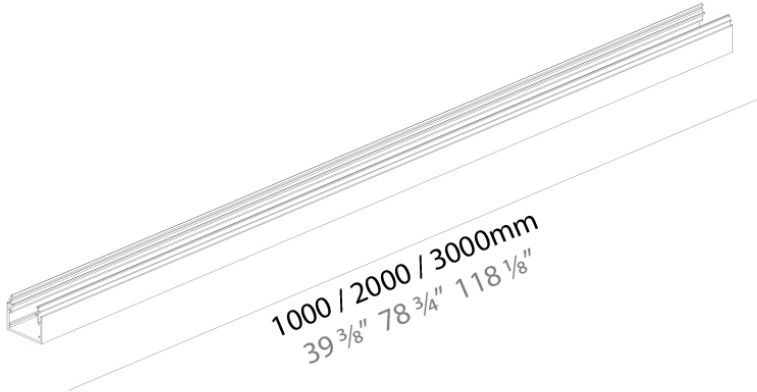
PHYSICAL

Shape: Rectangle  
Length (mm): 2000  
Length (in): 78 3/4  
Width (mm): 35  
Width (in): 1 3/8  
Height (mm): 28  
Height (in): 1 1/8  
Weight (kg): 0.392  
Weight (lbs): 0.86  
Fixture Material: Aluminum

RATINGS AND CERTIFICATIONS

Certified By: Certified for North American Standards  
IP rating: IP20

PROJECT
TYPE
NOTES
QUANTITY
DATE



A3ID40-SUS-SYS COMPONENTS

A38894

DESCRIPTION

Idaho / Hypro 40 Recessed System - 3000mm Black Cover

GENERAL

Series: Hypro  
Subseries: Hypro 40  
Brand: Prolicht  
Division: Architectural

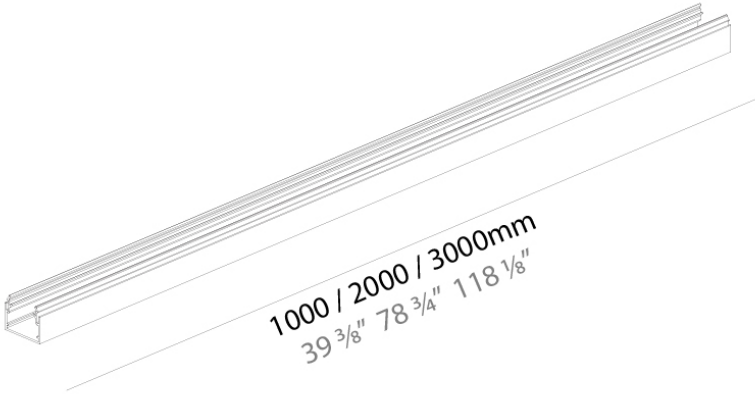
PHYSICAL

Shape: Rectangle  
Length (mm): 3000  
Length (in): 118 1/8  
Width (mm): 35  
Width (in): 1 3/8  
Height (mm): 28  
Height (in): 1 1/8  
Weight (kg): 0.588  
Weight (lbs): 1.3  
Fixture Material: Aluminum

RATINGS AND CERTIFICATIONS

Certified By: Certified for North American Standards  
IP rating: IP20

PROJECT
TYPE
NOTES
QUANTITY
DATE



A3ID40-SUS-SYS COMPONENTS

A38937-

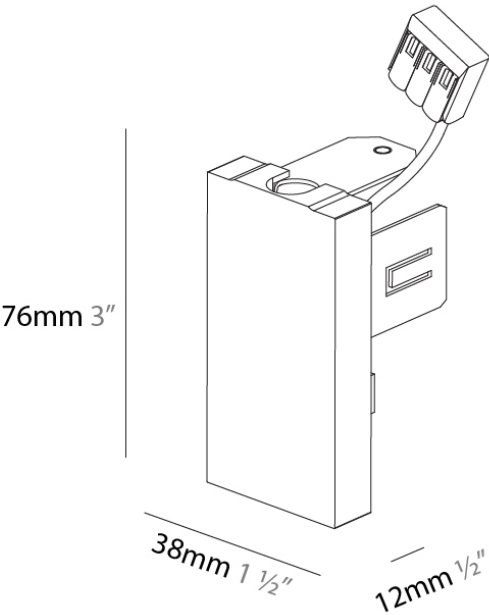
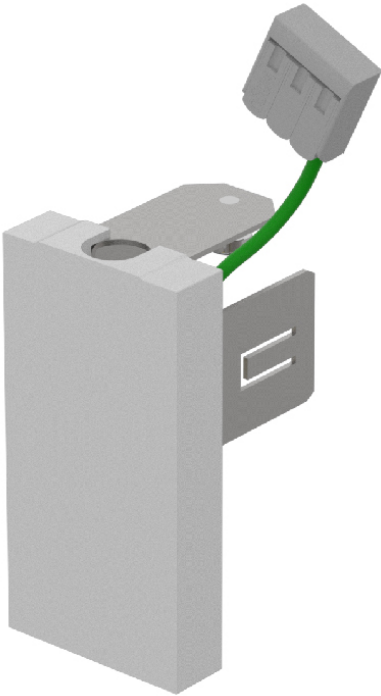
**DESCRIPTION**  
Idaho 40 / Hypro 40 - Suspension End Cap

**GENERAL**  
Brand: Prolicht  
Division: Architectural

**PHYSICAL**  
Shape: Rectangle  
Length (mm): 38  
Length (in): 1 1/2  
Width (mm): 12  
Width (in): 1/2  
Height (mm): 76  
Height (in): 3  
Weight (kg): 0.046  
Weight (lbs): .10  
Fixture Finish: SSR / BKV / CWI / CRY / HAB / LAG / UFT / ITA / RUA /  
RUR / MIC / FTG / MYG / TWT / LOD / PUS / FRO / FUP / KIA / POP /  
BLS / SPG / MEY / GOH / GUM / CHC / COM / ABZ / JAG  
Fixture Material: Aluminum

**RATINGS AND CERTIFICATIONS**  
Certified By: Certified for North American Standards  
IP rating: IP20

PROJECT
TYPE
NOTES
QUANTITY
DATE



A3ID40-SUS-SYS COMPONENTS

A38939-

DESCRIPTION

Idaho 40 / Hypro 40 - Surface/Suspension L-Coupler

GENERAL

Brand: Prolicht  
Division: Architectural

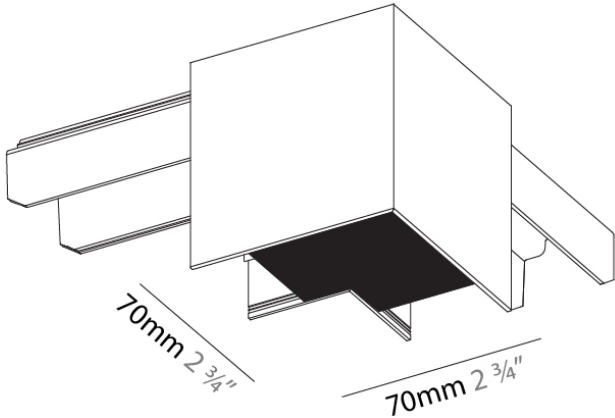
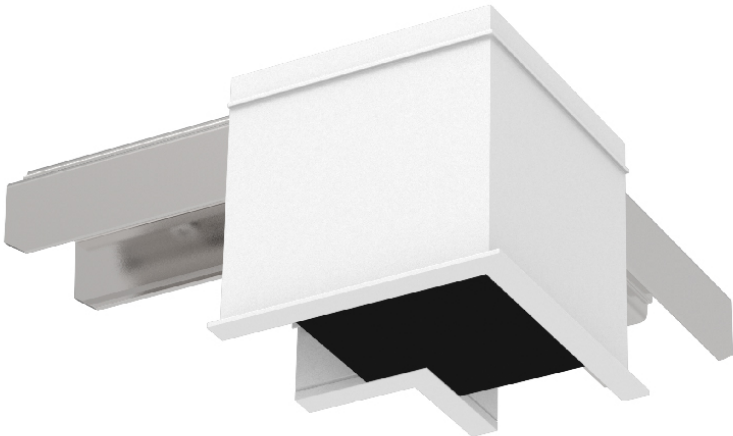
PHYSICAL

Length (mm): 70  
Length (in): 2 ¾  
Width (mm): 70  
Width (in): 2 ¾  
Height (mm): 76  
Height (in): 3  
Weight (kg): 0.247  
Weight (lbs): 0.54  
Fixture Finish: SSR / BKV / CWI / CRY / HAB / LAG / UFT / ITA / RUA /  
RUR / MIC / FTG / MYG / TWT / LOD / PUS / FRO / FUP / KIA / POP /  
BLS / SPG / MEY / GOH / GUM / CHC / COM / ABZ / JAG  
Fixture Material: Aluminum

RATINGS AND CERTIFICATIONS

Certified By: Certified for North American Standards  
IP rating: IP20

PROJECT
TYPE
NOTES
QUANTITY
DATE



A3ID40-SUS-SYS COMPONENTS

A38940-

DESCRIPTION

Idaho 40 / Hypro 40 - Surface/Suspension T-Coupler

GENERAL

Brand: Prolicht  
Division: Architectural

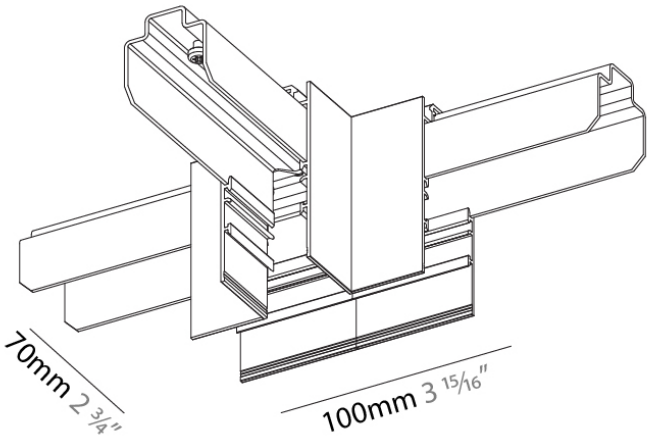
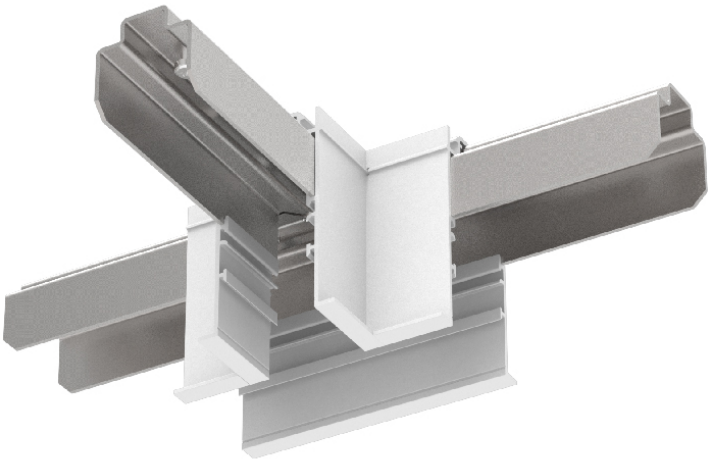
PHYSICAL

Length (mm): 100  
Length (in): 3 15/16  
Width (mm): 70  
Width (in): 2 3/4  
Height (mm): 76  
Height (in): 3  
Weight (kg): 0.524  
Weight (lbs): 1.16  
Fixture Finish: SSR / BKV / CWI / CRY / HAB / LAG / UFT / ITA / RUA /  
RUR / MIC / FTG / MYG / TWT / LOD / PUS / FRO / FUP / KIA / POP /  
BLS / SPG / MEY / GOH / GUM / CHC / COM / ABZ / JAG  
Fixture Material: Aluminum

RATINGS AND CERTIFICATIONS

Certified By: Certified for North American Standards  
IP rating: IP20

PROJECT	
TYPE	
NOTES	
QUANTITY	
DATE	



A3ID40-SUS-SYS COMPONENTS

PROJECT	
TYPE	
NOTES	
QUANTITY	
DATE	

A38941-

DESCRIPTION

Idaho 40 / Hypro 40 - Surface/Suspension X-Coupler

GENERAL

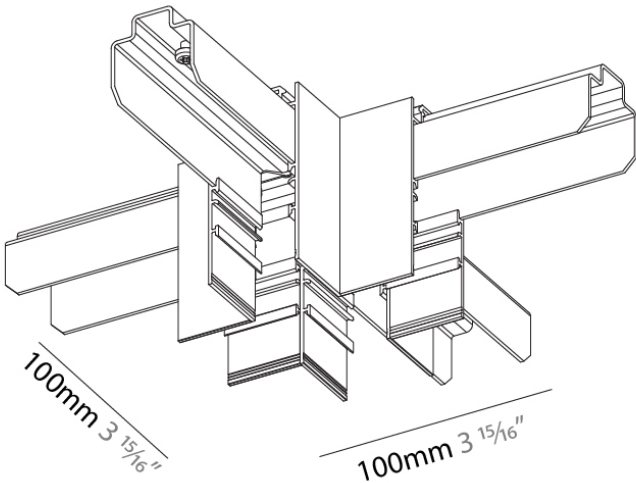
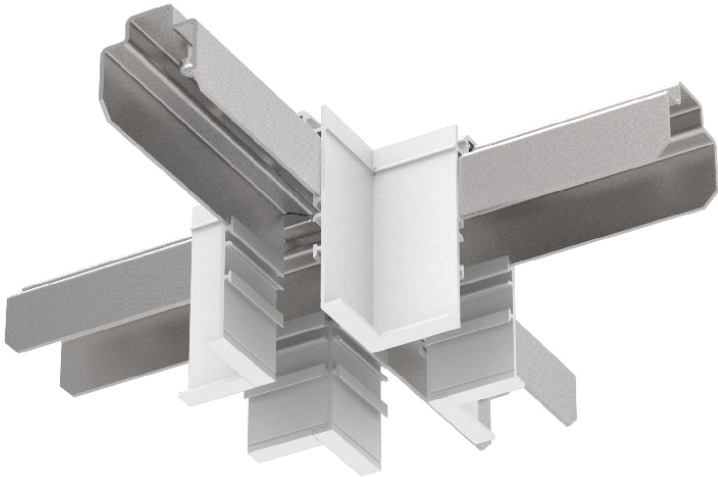
Brand: Prolicht  
Division: Architectural

PHYSICAL

Length (mm): 100  
Length (in): 3 15/16  
Width (mm): 100  
Width (in): 3 15/16  
Height (mm): 76  
Height (in): 3  
Weight (kg): 0.675  
Weight (lbs): 1.49  
Fixture Finish: SSR / BKV / CWI / CRY / HAB / LAG / UFT / ITA / RUA /  
RUR / MIC / FTG / MYG / TWT / LOD / PUS / FRO / FUP / KIA / POP /  
BLS / SPG / MEY / GOH / GUM / CHC / COM / ABZ / JAG  
Fixture Material: Aluminum

RATINGS AND CERTIFICATIONS

Certified By: Certified for North American Standards  
IP rating: IP20



A3ID40-SUS-SYS COMPONENTS

A38942-

DESCRIPTION

Idaho 40 / Hypro 40 - Surface/Suspension Ceiling-Wall Coupler

GENERAL

Brand: Prolicht  
Division: Architectural

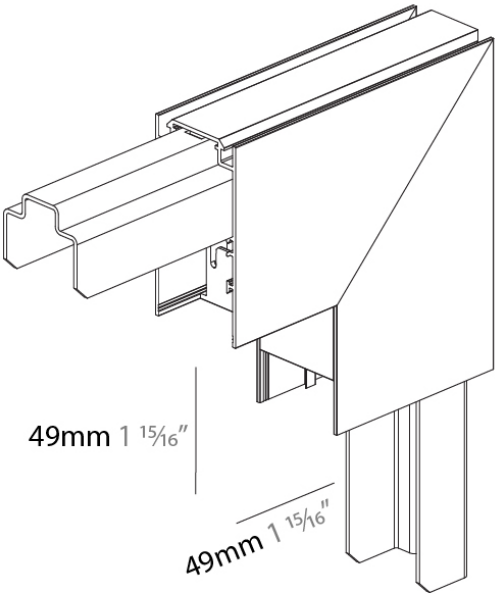
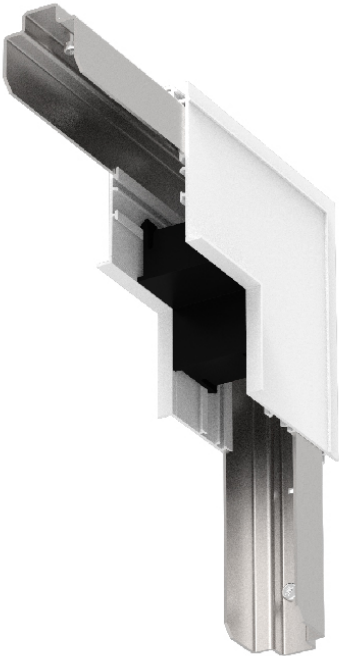
PHYSICAL

Length (mm): 49  
Length (in): 1 15/16  
Width (mm): 49  
Width (in): 1 15/16  
Height (mm): 210  
Height (in): 8 1/4  
Weight (kg): 0.587  
Weight (lbs): 1.29  
Fixture Finish: SSR / BKV / CWI / CRY / HAB / LAG / UFT / ITA / RUA /  
RUR / MIC / FTG / MYG / TWT / LOD / PUS / FRO / FUP / KIA / POP /  
BLS / SPG / MEY / GOH / GUM / CHC / COM / ABZ / JAG  
Fixture Material: Aluminum

RATINGS AND CERTIFICATIONS

Certified By: Certified for North American Standards  
IP rating: IP20

PROJECT
TYPE
NOTES
QUANTITY
DATE



A3ID40-SUS-SYS COMPONENTS

A38953-

DESCRIPTION

Idaho 40 / Hypro 40 - Suspension Installation Clip - 6000mm / 236 1/4"

GENERAL

Brand: Prolicht  
Division: Architectural

PHYSICAL

Length (mm): 30  
Length (in): 1 3/16  
Width (mm): 30  
Width (in): 1 3/16  
Height (mm): 6000  
Height (in): 236 1/4  
Weight (kg): 0.029  
Weight (lbs): 0.06  
Fixture Finish: SSR / BKV / CWI / CRY / HAB / LAG / UFT / ITA / RUA / RUR / MIC / FTG / MYG / TWT / LOD / PUS / FRO / FUP / KIA / POP / BLS / SPG / MEY / GOH / GUM / CHC / COM / ABZ / JAG  
Fixture Material: Aluminum

RATINGS AND CERTIFICATIONS

Certified By: Certified for North American Standards  
IP rating: IP20

PROJECT
TYPE
NOTES
QUANTITY
DATE





A3ID40-SUS-SYS COMPONENTS SUSPENSION

A38967-

DESCRIPTION

Idaho 40 / Hypro 40 - Suspension Installation Clip

GENERAL

Brand: Prolicht  
Division: Architectural  
Mounting Type: Suspension  
Mounting Location: Ceiling

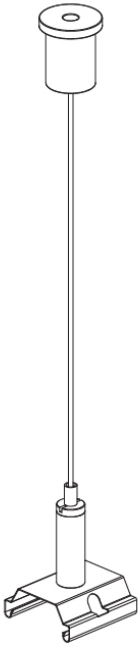
PHYSICAL

Length (mm): 30  
Length (in): 1 3/16  
Width (mm): 30  
Width (in): 1 3/16  
Height (mm): 2000  
Height (in): 78 3/4  
Weight (kg): 0.029  
Weight (lbs): 0.06  
Fixture Finish: SSR / BKV / CWI / CRY / HAB / LAG / UFT / ITA / RUA /  
RUR / MIC / FTG / MYG / TWT / LOD / PUS / FRO / FUP / KIA / POP /  
BLS / SPG / MEY / GOH / GUM / CHC / COM / ABZ / JAG  
Fixture Material: Aluminum

RATINGS AND CERTIFICATIONS

Certified By: Certified for North American Standards  
IP rating: IP20

PROJECT
TYPE
NOTES
QUANTITY
DATE



2000 / 6000mm  
78 3/4" / 236 1/4"

A3ID40-SUS-SYS COMPONENTS

A39013-

DESCRIPTION

Suspension Power Feed 3x0.75, 2000mm

GENERAL

Brand: Prolicht  
Division: Architectural

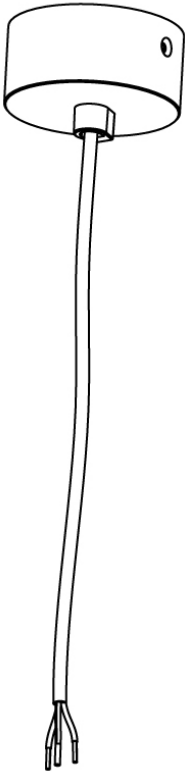
PHYSICAL

Shape: Round  
Diameter (mm): 114  
Diameter (in): 4 1/2  
Length (mm): 2000  
Length (in): 78 3/4  
Width (mm): 81  
Width (in): 3 1/16  
Height (mm): 32  
Height (in): 1 1/4  
Weight (kg): 0.3  
Weight (lbs): 0.66  
Fixture Finish: ANA / SSR / BKV / CWI / CRY / HAB / LAG / UFT / ITA /  
RUA / RUR / MIC / FTG / MYG / TWT / LOD / PUS / FRO / FUP / KIA /  
POP / BLS / SPG / MEY / GOH / GUM / CHC / COM / ABZ / JAG  
Fixture Material: Aluminum

RATINGS AND CERTIFICATIONS

Certified By: Certified for North American Standards  
IP rating: IP20

PROJECT
TYPE
NOTES
QUANTITY
DATE



A3ID40-SUS-SYS COMPONENTS

A39014-

DESCRIPTION

Suspension Power Feed 5x0.75 - 2000mm

GENERAL

Brand: Prolicht

Division: Architectural

PHYSICAL

Shape: Round

Diameter (mm): 114

Diameter (in): 4 1/2

Length (mm): 2000

Length (in): 78 3/4

Width (mm): 81

Width (in): 3 1/16

Height (mm): 32

Height (in): 1 1/4

Weight (kg): 0.3

Weight (lbs): 0.661

Fixture Finish: ANA / SSR / BKV / CWI / CRY / HAB / LAG / UFT / ITA /  
RUA / RUR / MIC / FTG / MYG / TWT / LOD / PUS / FRO / FUP / KIA /  
POP / BLS / SPG / MEY / GOH / GUM / CHC / COM / ABZ / JAG

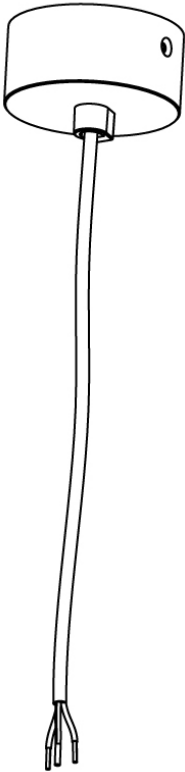
Fixture Material: Aluminum

RATINGS AND CERTIFICATIONS

Certified By: Certified for North American Standards

IP rating: IP20

PROJECT
TYPE
NOTES
QUANTITY
DATE



A3ID40-SUS-SYS COMPONENTS

A39015-

DESCRIPTION

Suspension Power Feed 4x0.75 2000mm 2 Circuits Phase Dimming

GENERAL

Brand: Prolicht  
Division: Architectural

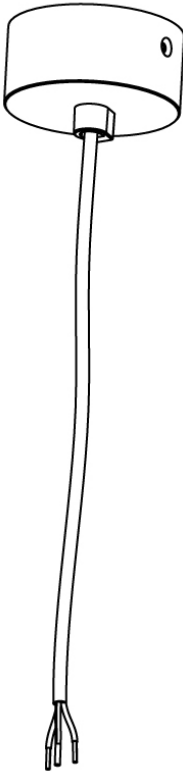
PHYSICAL

Shape: Round  
Diameter (mm): 114  
Diameter (in): 4 1/2  
Length (mm): 6000  
Length (in): 236 3/4  
Width (mm): 81  
Width (in): 3 7/16  
Height (mm): 32  
Height (in): 1 1/4  
Weight (kg): 0.118  
Weight (lbs): 0.26  
Fixture Finish: ANA / SSR / BKV / CWI / CRY / HAB / LAG / UFT / ITA / RUA / RUR / MIC / FTG / MYG / TWT / LOD / PUS / FRO / FUP / KIA / POP / BLS / SPG / MEY / GOH / GUM / CHC / COM / ABZ / JAG  
Fixture Material: Aluminum

RATINGS AND CERTIFICATIONS

Certified By: Certified for North American Standards  
IP rating: IP20

PROJECT
TYPE
NOTES
QUANTITY
DATE



A3ID40-SUS-SYS COMPONENTS

A39016-

DESCRIPTION

Suspension Power Feed 3x0.75, 6000mm

GENERAL

Brand: Prolicht  
Division: Architectural

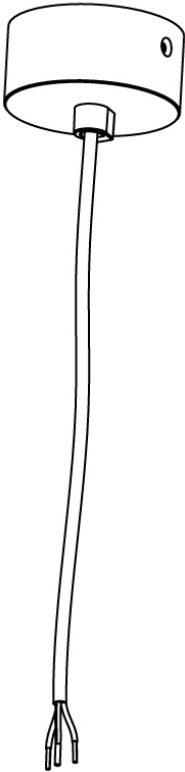
PHYSICAL

Shape: Round  
Diameter (mm): 114  
Diameter (in): 4 ¼  
Length (mm): 6000  
Length (in): 236 ¼  
Width (mm): 81  
Width (in): 3 ⅞  
Height (mm): 32  
Height (in): 1 ¼  
Weight (kg): 0.117  
Weight (lbs): 0.258  
Fixture Finish: ANA / SSR / BKV / CWI / CRY / HAB / LAG / UFT / ITA /  
RUA / RUR / MIC / FTG / MYG / TWT / LOD / PUS / FRO / FUP / KIA /  
POP / BLS / SPG / MEY / GOH / GUM / CHC / COM / ABZ / JAG  
Fixture Material: Aluminum

RATINGS AND CERTIFICATIONS

Certified By: Certified for North American Standards  
IP rating: IP20

PROJECT
TYPE
NOTES
QUANTITY
DATE



A3ID40-SUS-SYS COMPONENTS

A39017-

DESCRIPTION

Suspension Power Feed 5x0.75, 6000mm

GENERAL

Brand: Prolicht

Division: Architectural

PHYSICAL

Shape: Round

Diameter (mm): 81

Diameter (in): 3 3/16

Length (mm): 6000

Length (in): 236 1/4

Width (mm): 81

Width (in): 3 3/16

Height (mm): 32

Height (in): 1 1/4

Weight (kg): 0.117

Weight (lbs): 0.258

Fixture Finish: ANA / SSR / BKV / CWI / CRY / HAB / LAG / UFT / ITA /  
RUA / RUR / MIC / FTG / MYG / TWT / LOD / PUS / FRO / FUP / KIA /  
POP / BLS / SPG / MEY / GOH / GUM / CHC / COM / ABZ / JAG

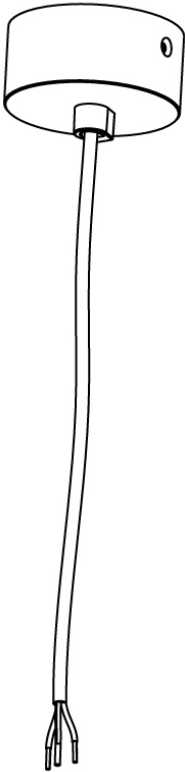
Fixture Material: Aluminum

RATINGS AND CERTIFICATIONS

Certified By: Certified for North American Standards

IP rating: IP20

PROJECT
TYPE
NOTES
QUANTITY
DATE



A3ID40-SUS-SYS COMPONENTS

A39018-

DESCRIPTION

Suspension Power Feed 4x0.75, 6000mm 2 Circuits Phase Dimming

GENERAL

Brand: Prolicht  
Division: Architectural

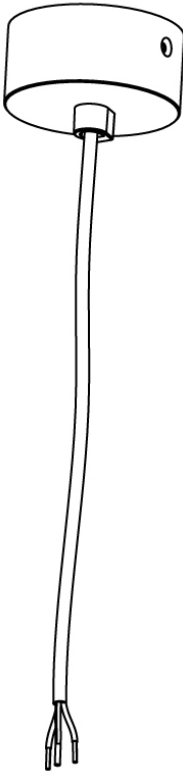
PHYSICAL

Shape: Round  
Diameter (mm): 81  
Diameter (in): 3 3/16  
Length (mm): 3 3/16  
Length (in): 236 1/4  
Width (mm): 81  
Width (in): 3 3/16  
Height (mm): 32  
Height (in): 1 1/4  
Weight (kg): 0.35  
Weight (lbs): 0.77  
Fixture Finish: ANA / SSR / BKV / CWI / CRY / HAB / LAG / UFT / ITA / RUA / RUR / MIC / FTG / MYG / TWT / LOD / PUS / FRO / FUP / KIA / POP / BLS / SPG / MEY / GOH / GUM / CHC / COM / ABZ / JAG  
Fixture Material: Aluminum

RATINGS AND CERTIFICATIONS

Certified By: Certified for North American Standards  
IP rating: IP20

PROJECT
TYPE
NOTES
QUANTITY
DATE



## LEGEND

	floor-mounted		pivotal		special LED (upon request) RGB, RGBW, tunable, gold+, meat+, art+, fashion+
	wall and ceiling: recessed and surface mounted		rotating		warm dim / natural dimming LED
	ceiling-mounted and wall-mounted		illuminate tilted		rechargeable battery powered
	wall-mounted		color of suspension cable		fixture with natural vivid LED (upon request)
	omni-directional light distribution		length of suspension cable		color rendering index
	direct light distribution		reflector degree selection		color temperature
	direct/indirect light distribution		super spot		lumen (luminous flux)
	indirect light distribution		lens		efficacy (lumens per watt)
	asymmetric light distribution		lens pack		Unified Glare Rating (UGR) range from 5-40
	aura light distribution		shine ring		marine grade (AISI 316 stainless steel)
	round wall or ceiling cut-out		integrated shine ring with diffuser		walk on
	square wall or ceiling cut-out		free individual colors 01-29		drive on
	the supplied jig specifies the cutout dimensions		individual colors: 00 (free of charge), 01-25 (extra charge)		Dark Sky Compliance
	minimum distance (meters) lamp - object		luminaire part to be colored (F1)		Americans with Disabilities Act (less than 4" off the wall located between 27"-84" from floor)
	recessed depth		luminaire part to be colored (F2)		lamp protected against explosion
	ceiling thickness in mm		luminaire part to be colored (F3)		blown glass using traditional methods by master glass blower
	ceiling thickness selection		luminaire part to be colored (F4)		acoustic material
	dimmable DP (phase), DV (0-10V), DD (dali), DS (step-dim)		luminaire part to be colored (F5)		protection class I, protection insulation
	included or excluded LED driver/transformer/control gear		color of 3-circuit adaptor		protection class II, protection insulation
	separately switchable		indirect diffuser		ETL Certified to UL and CSA Standards
	sensor		direct diffuser		UL Certified to UL and CSA Standards
	remote control		ball-proof (upon request)		CSA Certified to UL and CSA Standards
	available upon request		accessory		Certified for North American Standards

## IP RATING

	protected against ingress of solid bodies greater than 12.5mm (finger)
	protected against ingress of solid bodies greater than 2.5mm protected against sprays of water up to 60 degrees from the vertical (rain)
	protected against ingress of solid bodies greater than 1mm (wire) no protection against the ingress of moisture
	protected against ingress of solid bodies greater than 1mm (wire) protected against sprays of water up to 60 degrees from the vertical (rain)
	protected against ingress of solid bodies greater than 1mm (wire) protected against water splashed from all directions
	protected against limited ingress of dust (wet rooms/covered outdoor areas) protected against water splashed from all directions
	protected against ingress of dust protected against jets of water
	protected against ingress of dust protected against powerful jets of water or heavy seas
	protected against ingress of dust protected against immersion of water between 15cm - 1m for 30 minutes
	protected against ingress of dust protected against immersion of water under pressure for long periods

## IK RATING

	protected against 0.14 joules impact (equivalent to 0.25kg mass dropped from 56mm above the surface)
	protected against 0.2 joules impact (equivalent to 0.25kg mass dropped from 80mm above the surface)
	protected against 0.35 joules impact (equivalent to 0.25kg mass dropped from 140mm above the surface)
	protected against 0.5 joules impact (equivalent to 0.25kg mass dropped from 200mm above the surface)
	protected against 0.7 joules impact (equivalent to 0.25kg mass dropped from 280mm above the surface)
	protected against 1 joules impact (equivalent to 0.25kg mass dropped from 400mm above the surface)
	protected against 2 joules impact (equivalent to 0.5kg mass dropped from 400mm above the surface)
	protected against 5 joules impact (equivalent to 1.7kg mass dropped from 300mm above the surface)
	protected against 10 joules impact (equivalent to 5.0kg mass dropped from 200mm above the surface)
	protected against 20 joules impact (equivalent to 5.0kg mass dropped from 400mm above the surface)