

A3MAGPRO-REC-SYS COMPONENTS RECESSED

A35767-

DESCRIPTION

Magiq Pro - Wallwash - 48mm / 1 7/8" - 10.9W LED (Zhaga Standard) - 2700K / 3000K / 4000K

GENERAL

Series: Magiq Pro
 Subseries: Magiq Pro Wallwash
 Partner: Prolicht
 Division: Architectural
 Installation: Recessed
 Product Type: Ceiling Recessed
 Mounting Location: Ceiling
 Light Distribution: Adjustable / Downlight

PHYSICAL

Aperture Sizes - Downlights: 1"
 Shape: Round
 Diameter (mm): 48
 Diameter (in): 1 7/8
 Height (mm): 89
 Height (in): 3 1/2
 Min. Recessing Depth (mm): 105
 Min. Recessing Depth (in): 4 1/8
 Weight (kg): 0.181
 Weight (lbs): 0.4
 Fixture Finish: WHI / BLK
 Fixture Material: Aluminum

ELECTRICAL

Input Wattage Range: 10 - 19 W
 Lamp Type: LED (Zhaga Standard)
 Input Wattage (W): 10.9
 Total Output Wattage (W): 9.1
 Dimming: Non-Dimming / Phase Dimming (120Vac only) / 0-10V Dimming
 Driver Included: No
 Driver Location: Remote
 Driver Type: Constant Current - Universal
 Driver Class: Class 2
 Input Voltage (V): 120 - 277
 Constant Current (mA): 500

LED

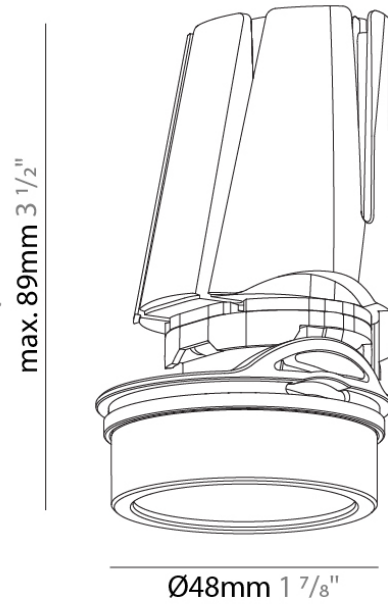
Delivered Lumen Range: 500 - 999 lm
 Color Temperature (°K): 2700/3000/4000/Tunable White
 Max. Delivered Lumen (lm): 856 / 900 / 912 / 532
 Nominal Lumen (lm): 1016 / 1068 / 1082 / 810
 CRI: >90 CRI
 Lamp Life (hrs): 50000

OPTICAL

Adjustability: Rotational 350°; Tilt 13°

RATINGS AND CERTIFICATIONS

Certified By: CSA Certified to UL and CSA Standards
 IP rating: IP20



PROJECT	
TYPE	
NOTES	
QUANTITY	
DATE	

A3MAGPRO-REC-SYS COMPONENTS RECESSED

A35768-

DESCRIPTION

Magiq Pro - Spot - 48mm / 1 7/8" - 9W LED (Zhaga Standard) - 2700K / 3000K / 4000K - Reflector 14°

GENERAL

Series: Magiq Pro
 Subseries: Magiq Pro
 Partner: Prolight
 Division: Architectural
 Installation: Recessed
 Product Type: Ceiling Recessed
 Mounting Location: Ceiling
 Light Distribution: Adjustable / Downlight

PHYSICAL

Aperture Sizes - Downlights: 1"
 Shape: Round
 Diameter (mm): 48
 Diameter (in): 1 7/8
 Height (mm): 89
 Height (in): 3 1/2
 Min. Recessing Depth (mm): 105
 Min. Recessing Depth (in): 4 1/8
 Weight (kg): 0.184
 Weight (lbs): 0.4
 Fixture Finish: WHI / BLK
 Fixture Material: Aluminum Die Cast

ELECTRICAL

Input Wattage Range: 1 - 9 W
 Lamp Type: LED (Zhaga Standard)
 Input Wattage (W): 9
 Total Output Wattage (W): 8.1
 Dimming: Tri-Mode (Non-Dimming and Phase Dimming (120Vac only) and 0-10V Dimming)
 Driver Included: No
 Driver Location: Remote
 Driver Type: Constant Current - Universal
 Driver Class: Class 2
 Input Voltage (V): 120 - 277
 Constant Current (mA): 225
 Constant Voltage (V): 37.5

LED

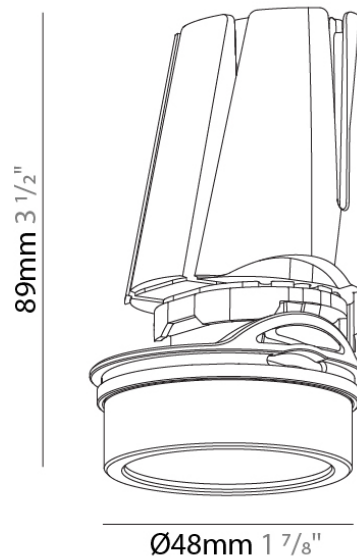
Delivered Lumen Range: 100 - 499 lm
 Color Temperature (°K): 2700 / 3000 / 4000
 Max. Delivered Lumen (lm): 313 / 333 / 349
 Nominal Lumen (lm): 658 / 700 / 734
 CRI: >90 CRI
 Lamp Life (hrs): 50000

OPTICAL

Reflector°: 14
 Adjustability: Rotational 350°; Tilt 13°

RATINGS AND CERTIFICATIONS

Certified By: CSA Certified to UL and CSA Standards
 IP rating: IP20



355°



12.5°



min. 105



PROJECT
TYPE
NOTES
QUANTITY
DATE

A3MAGPRO-REC-SYS COMPONENTS RECESSED

A35769-

DESCRIPTION

Magiq Pro - 48mm / 1 7/8" - 10.9W LED (Zhaga Standard) - 2700K / 3000K / 3500K / 4000K - Reflector: 34° / 52° / 68° - Lens - No Lens / Linear Spread Lens / Spread Lens / Honeycomb Louvre

GENERAL

Series: Magiq Pro
 Subseries: Magiq Pro
 Partner: Prolicht
 Division: Architectural
 Installation: Recessed
 Product Type: Ceiling Recessed
 Mounting Location: Ceiling
 Light Distribution: Adjustable / Downlight

PHYSICAL

Aperture Sizes - Downlights: 1"
 Shape: Round
 Diameter (mm): 48
 Diameter (in): 1 7/8
 Height (mm): 89
 Height (in): 3 1/2
 Min. Recessing Depth (mm): 105
 Min. Recessing Depth (in): 4 1/8
 Weight (kg): 0.181
 Weight (lbs): 0.4
 Fixture Finish: WHI / BLK
 Fixture Material: Aluminum Die Cast

ELECTRICAL

Input Wattage Range: 10 - 19 W
 Lamp Type: LED (Zhaga Standard)
 Input Wattage (W): 10.9
 Total Output Wattage (W): 9.1
 Dimming: Non-Dimming / Phase Dimming (120Vac only) / 0-10V Dimming
 Driver Included: No
 Driver Location: Remote
 Driver Type: Constant Current - Universal
 Driver Class: Class 2
 Input Voltage (V): 120 - 277
 Constant Current (mA): 500

LED

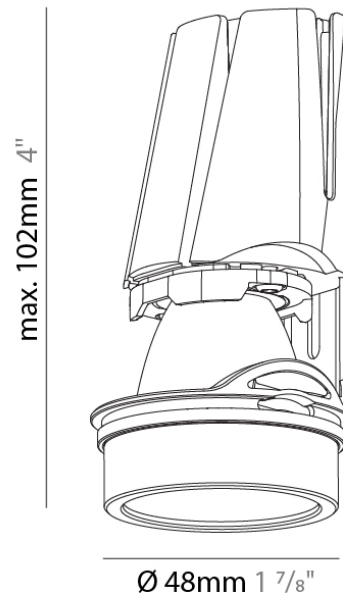
Delivered Lumen Range: 500 - 999 lm
 Color Temperature (°K): 2700/3000/3500/4000/Tunable White
 Max. Delivered Lumen (lm): 886 / 931 / 944 / 696
 Nominal Lumen (lm): 1016 / 1068 / 1082 / 810
 CRI: >90 CRI
 Lamp Life (hrs): 50000

OPTICAL

Reflector°: 34 / 52 / 68
 Optic°: No Lens / Linear Spread Lens / Spread Lens / Honeycomb Louvre
 Adjustability: Rotational 350°; Tilt 13°

RATINGS AND CERTIFICATIONS

Certified By: CSA Certified to UL and CSA Standards
 IP rating: IP20



PROJECT	
TYPE	
NOTES	
QUANTITY	
DATE	

A3MAGPRO-REC-SYS COMPONENTS RECESSED

A35770-

DESCRIPTION

Magiq Pro - Wallwash IP44 - 48mm / 1 7/8" - 10.9W LED (Zhaga Standard) - 2700K / 3000K / 4000K

GENERAL

Series: Magiq Pro
 Subseries: Magiq Pro Wallwash
 Partner: Prolight
 Division: Architectural
 Installation: Recessed
 Product Type: Ceiling Recessed
 Mounting Location: Ceiling
 Light Distribution: Adjustable / Downlight

PHYSICAL

Aperture Sizes - Downlights: 1"
 Shape: Round
 Diameter (mm): 48
 Diameter (in): 1 7/8
 Height (mm): 89
 Height (in): 3 1/2
 Min. Recessing Depth (mm): 105
 Min. Recessing Depth (in): 4 1/8
 Weight (kg): 0.185
 Weight (lbs): 0.41
 Fixture Finish: WHI / BLK
 Fixture Material: Aluminum

ELECTRICAL

Input Wattage Range: 10 - 19 W
 Lamp Type: LED (Zhaga Standard)
 Input Wattage (W): 10.9
 Total Output Wattage (W): 9.1
 Dimming: Non-Dimming / Phase Dimming (120Vac only) / 0-10V Dimming
 Driver Included: No
 Driver Location: Remote
 Driver Type: Constant Current - Universal
 Driver Class: Class 2
 Input Voltage (V): 120 - 277
 Constant Current (mA): 500
 Constant Voltage (V): 18

LED

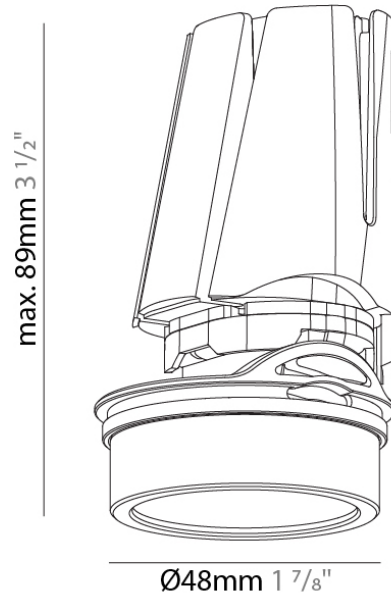
Delivered Lumen Range: 500 - 999 lm
 Color Temperature (°K): 2700/3000/4000/Tunable White
 Max. Delivered Lumen (lm): 856 / 900 / 912 / 492
 Nominal Lumen (lm): 1016 / 1068 / 1082 / 810
 CRI: >90 CRI
 Lamp Life (hrs): 50000

OPTICAL

Adjustability: Rotational 350°; Tilt 13°

RATINGS AND CERTIFICATIONS

Certified By: CSA Certified to UL and CSA Standards
 IP rating: IP44



A3MAGPRO-REC-SYS COMPONENTS RECESSED

A35771-

DESCRIPTION

Magiq Pro - IP44 - 48mm / 1 7/8" - 10.9W LED (Zhaga Standard) - 2700K / 3000K / 4000K - Beam Angle 14° - Dimmable

GENERAL

Series: Magiq Pro
 Subseries: Magiq Pro
 Partner: Prolicht
 Division: Architectural
 Installation: Recessed
 Product Type: Ceiling Recessed
 Mounting Location: Ceiling
 Light Distribution: Adjustable / Downlight

PHYSICAL

Aperture Sizes - Downlights: 1"
 Shape: Round
 Diameter (mm): 48
 Diameter (in): 1 7/8
 Height (mm): 89
 Height (in): 3 1/2
 Min. Recessing Depth (mm): 105
 Min. Recessing Depth (in): 4 1/8
 Weight (kg): 0.184
 Weight (lbs): 0.4
 Fixture Finish: WHI / BLK
 Fixture Material: Aluminum Die Cast

ELECTRICAL

Input Wattage Range: 1 - 9 W
 Lamp Type: LED (Zhaga Standard)
 Input Wattage (W): 9
 Total Output Wattage (W): 8.1
 Dimming: Tri-Mode (Non-Dimming and Phase Dimming (120Vac only) and 0-10V Dimming)
 Driver Included: No
 Driver Location: Remote
 Driver Type: Constant Current - Universal
 Driver Class: Class 2
 Input Voltage (V): 120 - 277
 Constant Current (mA): 225
 Constant Voltage (V): 37.5

LED

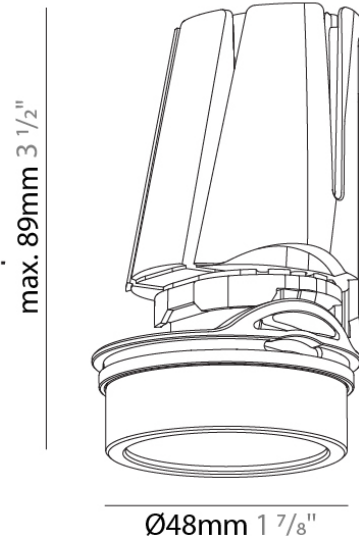
Delivered Lumen Range: 100 - 499 lm
 Color Temperature (°K): 2700 / 3000 / 4000
 Max. Delivered Lumen (lm): 313 / 333 / 349
 Nominal Lumen (lm): 658 / 700 / 734
 CRI: >90 CRI
 Lamp Life (hrs): 50000

OPTICAL

Reflector°: 14
 Adjustability: Rotational 350°; Tilt 13°

RATINGS AND CERTIFICATIONS

Certified By: CSA Certified to UL and CSA Standards
 IP rating: IP44



PROJECT
TYPE
NOTES
QUANTITY
DATE

A3MAGPRO-REC-SYS COMPONENTS RECESSED

A35772-

DESCRIPTION

Magiq Pro - IP44 - 48mm / 1 7/8" - 10.9W LED (Zhaga Standard) - 2700K / 3000K / 4000K - Reflectors 34° / 52° / 68° - Lens: No Lens / Linear Spread Lens / Spread Lens / Honeycomb Louvre

GENERAL

Series: Magiq Pro
 Subseries: Magiq Pro
 Partner: Prolicht
 Division: Architectural
 Installation: Recessed
 Product Type: Ceiling Recessed
 Mounting Location: Ceiling
 Light Distribution: Adjustable / Downlight

PHYSICAL

Aperture Sizes - Downlights: 1"
 Shape: Round
 Diameter (mm): 48
 Diameter (in): 1 7/8
 Height (mm): 89
 Height (in): 3 1/2
 Min. Recessing Depth (mm): 105
 Min. Recessing Depth (in): 4 1/8
 Weight (kg): 0.181
 Weight (lbs): 0.4
 Fixture Finish: WHI / BLK
 Fixture Material: Aluminum Die Cast

ELECTRICAL

Input Wattage Range: 10 - 19 W
 Lamp Type: LED (Zhaga Standard)
 Input Wattage (W): 10.9
 Total Output Wattage (W): 9.1
 Dimming: Non-Dimming / Phase Dimming (120Vac only) / 0-10V Dimming
 Driver Included: No
 Driver Location: Remote
 Driver Type: Constant Current - Universal
 Driver Class: Class 2
 Input Voltage (V): 120 - 277
 Constant Current (mA): 500
 Constant Voltage (V): 18

LED

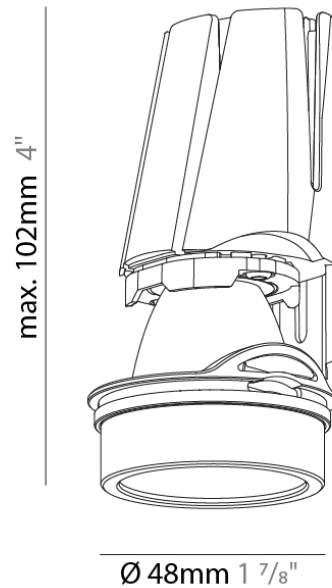
Delivered Lumen Range: 500 - 999 lm
 Color Temperature (°K): 2700/3000/4000/Tunable White
 Max. Delivered Lumen (lm): 835 / 878 / 889 / 655
 Nominal Lumen (lm): 1016 / 1068 / 1082 / 810
 CRI: >90 CRI
 Lamp Life (hrs): 50000

OPTICAL

Reflector: 34 / 52 / 68
 Optic: No Lens / Linear Spread Lens / Spread Lens / Honeycomb Louvre
 Adjustability: Rotational 350°; Tilt 13°

RATINGS AND CERTIFICATIONS

Certified By: CSA Certified to UL and CSA Standards
 IP rating: IP44



PROJECT
TYPE
NOTES
QUANTITY
DATE

A3MAGPRO-REC-SYS COMPONENTS RECESSED

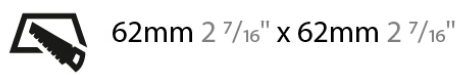
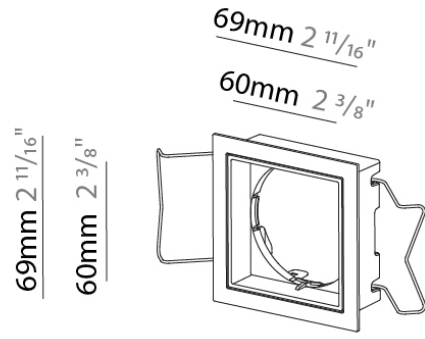
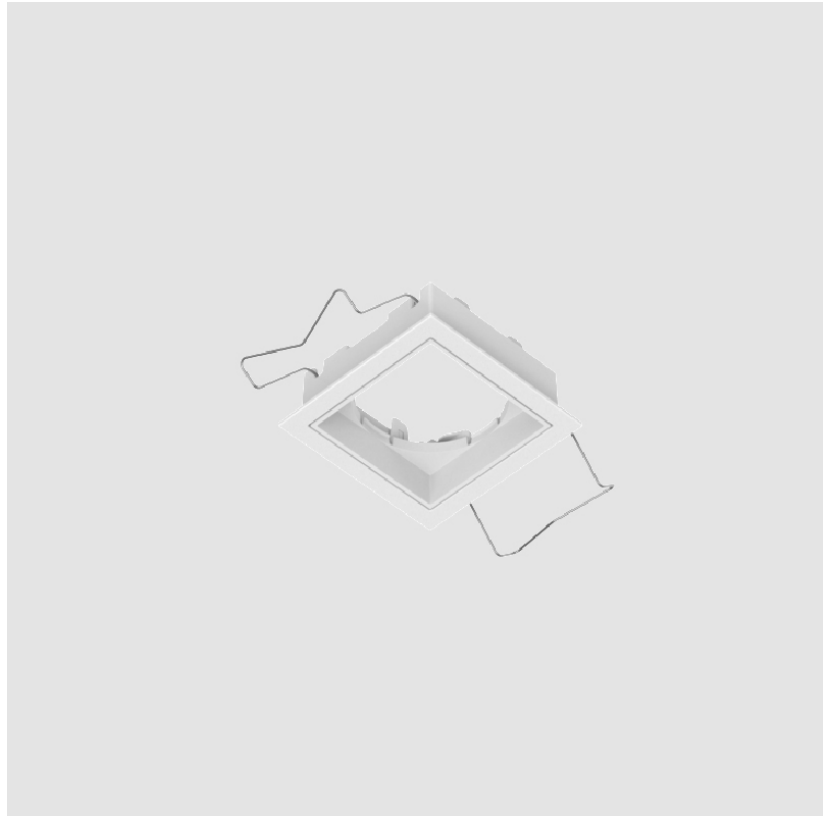
A380152-

DESCRIPTION
Magiq Pro - Recessing Frame - 60mm x 60mm

GENERAL
Series: Magiq Pro
Subseries: Magiq Pro
Partner: Prolicht
Division: Architectural
Installation: Recessed
Product Type: Modular Systems
Mounting Location: Ceiling

PHYSICAL
Shape: Square
Length (mm): 60
Length (in): 2 3/8
Width (mm): 60
Width (in): 2 3/8
Height (mm): 30
Height (in): 1 3/16
Ceiling Thickness (mm): 10 / 12.5 / 15 / 25
Ceiling Thickness (in): 3/8 or 1/2 or 9/16 or 1
Weight (kg): 0.04
Weight (lbs): 0.09
Fixture Finish: SSR / BKV / CWI / CRY / HAB / UFT / ITA / RUA / FTG / MYG / LOD / PUS / FRO / FUP / KIA / POP / BLS / SPG / MEY / GOH / CHC / COM / ABZ / JAG / OBR / MOS / ROR
Holder Finish: WHI / BLK
Fixture Material: Aluminum
Cut-out Measurements: 62mm / 2 7/16" x 62mm / 2 7/16"

RATINGS AND CERTIFICATIONS
Certified By: CSA Certified to UL and CSA Standards
IP rating: IP20



A3MAGPRO-REC-SYS COMPONENTS RECESSED

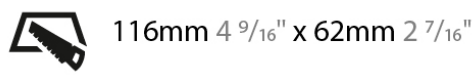
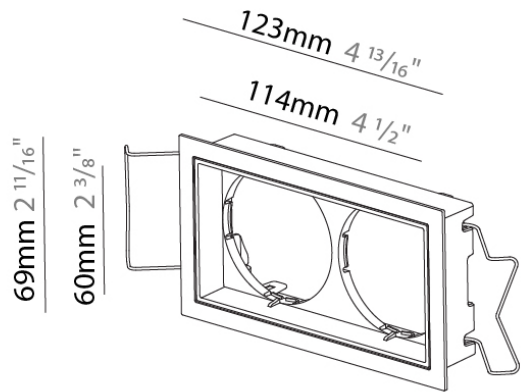
A380153-

DESCRIPTION
Magiq Pro - Recessing Frame - 114mm x 60mm

GENERAL
Series: Magiq Pro
Subseries: Magiq Pro
Partner: Prolicht
Division: Architectural
Installation: Recessed
Product Type: Modular Systems
Mounting Location: Ceiling

PHYSICAL
Shape: Square
Length (mm): 114
Length (in): 4 1/2
Width (mm): 60
Width (in): 2 3/8
Height (mm): 30
Height (in): 1 3/16
Ceiling Thickness (mm): 10 / 12.5 / 15 / 25
Ceiling Thickness (in): 3/8 or 1/2 or 9/16 or 1
Weight (kg): 0.061
Weight (lbs): 0.13
Fixture Finish: SSR / BKV / CWI / CRY / HAB / UFT / ITA / RUA / FTG / MYG / LOD / PUS / FRO / FUP / KIA / POP / BLS / SPG / MEY / GOH / CHC / COM / ABZ / JAG / OBR / MOS / ROR
Holder Finish: WHI / BLK
Fixture Material: Aluminum
Cut-out Measurements: 116mm / 4 9/16" x 62mm / 2 7/16"

RATINGS AND CERTIFICATIONS
Certified By: CSA Certified to UL and CSA Standards
IP rating: IP20



PROJECT
TYPE
NOTES
QUANTITY
DATE

A3MAGPRO-REC-SYS COMPONENTS RECESSED

A380154-

DESCRIPTION

Magiq Pro - Recessing Frame - 168mm x 60mm

GENERAL

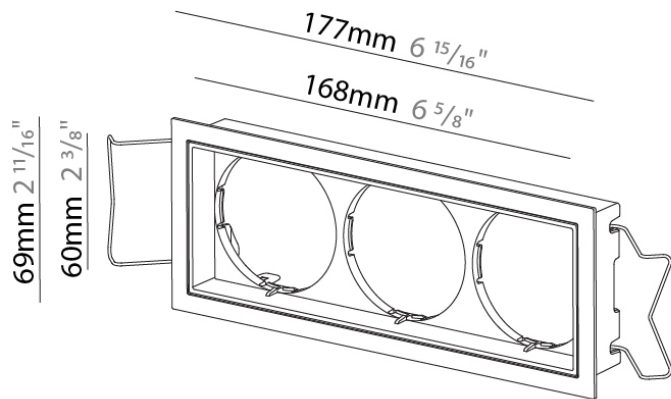
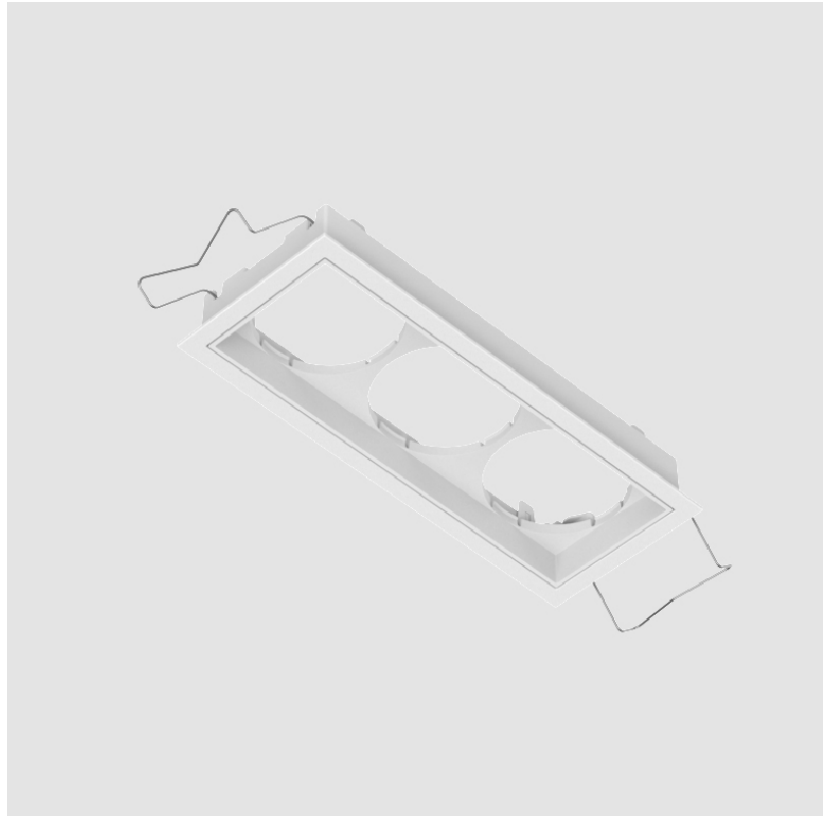
Series: Magiq Pro
 Subseries: Magiq Pro
 Partner: Prolicht
 Division: Architectural
 Installation: Recessed
 Product Type: Modular Systems
 Mounting Location: Ceiling

PHYSICAL

Shape: Square
 Length (mm): 168
 Length (in): 6 ⁵/₈
 Width (mm): 60
 Width (in): 2 ³/₈
 Height (mm): 30
 Height (in): 1 ³/₁₆
 Ceiling Thickness (mm): 10 / 12.5 / 15 / 25
 Ceiling Thickness (in): 3/8 or 1/2 or 9/16 or 1
 Weight (kg): 0.081
 Weight (lbs): 0.18
 Fixture Finish: SSR / BKV / CWI / CRY / HAB / UFT / ITA / RUA / FTG / MYG / LOD / PUS / FRO / FUP / KIA / POP / BLS / SPG / MEY / GOH / CHC / COM / ABZ / JAG / OBR / MOS / ROR
 Holder Finish: WHI / BLK
 Fixture Material: Aluminum
 Cut-out Measurements: 170mm / 6 11/16" x 62mm / 2 7/16"

RATINGS AND CERTIFICATIONS

Certified By: CSA Certified to UL and CSA Standards
 IP rating: IP20



170mm 6 11/16" x 62mm 2 7/16"



PROJECT	
TYPE	
NOTES	
QUANTITY	
DATE	

A3MAGPRO-REC-SYS COMPONENTS RECESSED

A380155-

DESCRIPTION

Magiq Pro - Recessing Frame - 222mm x 60mm

GENERAL

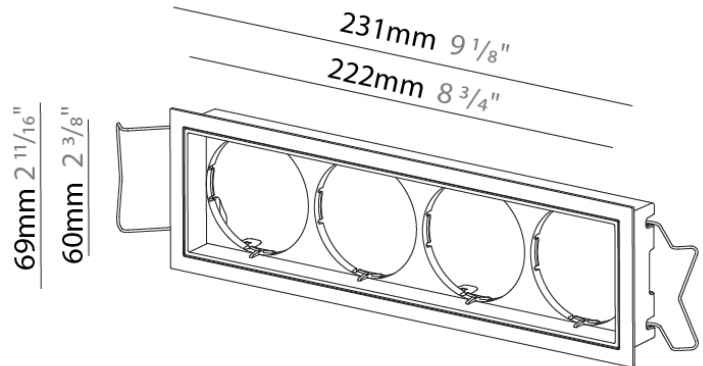
Series: Magiq Pro
 Subseries: Magiq Pro
 Partner: Prolicht
 Division: Architectural
 Installation: Recessed
 Product Type: Modular Systems
 Mounting Location: Ceiling

PHYSICAL

Shape: Square
 Length (mm): 222
 Length (in): 8 3/4
 Width (mm): 60
 Width (in): 2 3/8
 Height (mm): 30
 Height (in): 1 3/16
 Ceiling Thickness (mm): 10 / 12.5 / 15 / 25
 Ceiling Thickness (in): 3/8 or 1/2 or 9/16 or 1
 Weight (kg): 0.081
 Weight (lbs): 0.18
 Fixture Finish: SSR / BKV / CWI / CRY / HAB / UFT / ITA / RUA / FTG / MYG / LOD / PUS / FRO / FUP / KIA / POP / BLS / SPG / MEY / GOH / CHC / COM / ABZ / JAG / OBR / MOS / ROR
 Holder Finish: WHI / BLK
 Fixture Material: Aluminum
 Cut-out Measurements: 224mm / 8 13/16" x 62mm / 2 7/16"

RATINGS AND CERTIFICATIONS

Certified By: CSA Certified to UL and CSA Standards
 IP rating: IP20



224mm 8 13/16" x 62mm 2 7/16"



A3MAGPRO-REC-SYS COMPONENTS

DPH0160SEHT

DESCRIPTION

Hatch - XTC16-0350P-UNV-I - Phase Dimming @120Vac only - Dim-to-Off - 3.5-16W - 175-350mA - 120-277Vac - LED power supply -Used with ENCP5 -Available with IP68-Outdoor Rated - ENCP20, ENCP22

GENERAL

Division: Architectural : Components : LED Drivers

PHYSICAL

Length (mm): 85.4

Length (in): 3 ²³/₆₄

Width (mm): 41.9

Width (in): 1 ²¹/₃₂

Height (mm): 25.6

Height (in): 1 ¹/₆₄

Fixture Material: Plastic

ELECTRICAL

Lamp Type: LED

Input Wattage (W): 19

Total Output Wattage (W): 3.5-16

Dimming: Phase Dimming (120Vac Only)

Driver Type: Constant Current - Universal

Driver Class: Class 2

Input Voltage (V): 120 - 277

Constant Current (MA): 175-350

Constant Voltage (V): 20-46

Upon Request: Phase dimming @120Vac only

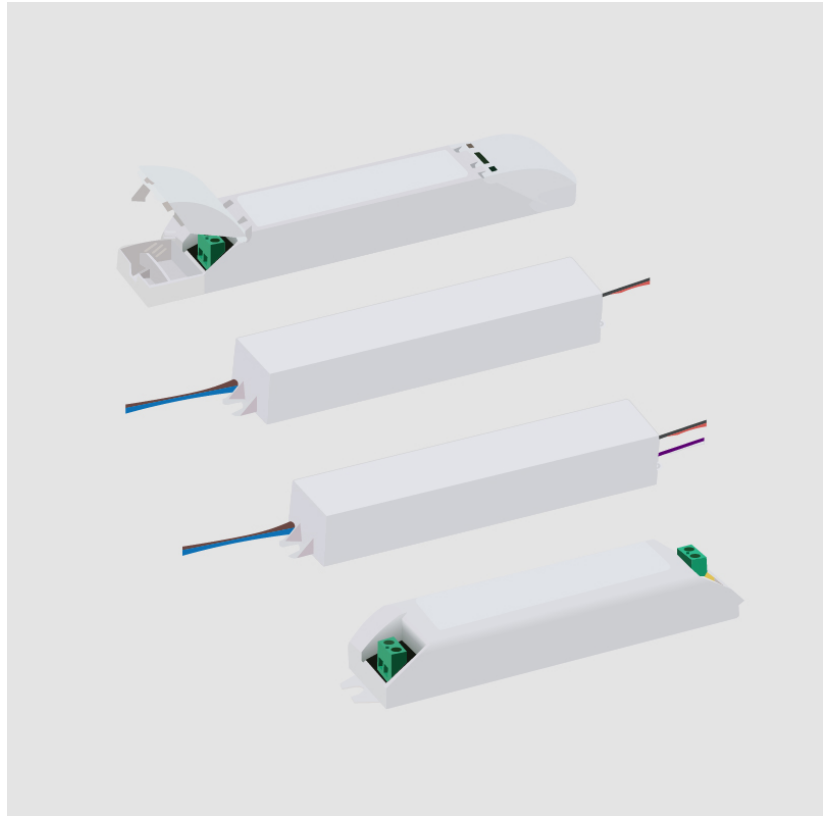
LED

Efficiency (%): >85%

RATINGS AND CERTIFICATIONS

Certified By: UR Listed

IP rating: Dry / Damp



A3MAGPRO-REC-SYS COMPONENTS

DTM0210500ES

DESCRIPTION

ERP - ESS030W-0500-42 - 0-10Vdc & Phase [Leading and Trailing Edge @120Vac only] dimming - 21W - 500mA - 120 / 277Vac - LED power supply -Used with ENCP3 -Available with IP68-Outdoor Rated -ENCP20, ENCP22

GENERAL

Division: Architectural : Components : LED Drivers

PHYSICAL

Length (mm): 84

Length (in): 3 1/2

Width (mm): 40

Width (in): 1

Height (mm): 25.2

Height (in): 9/16

Max. Overall Height (in): 1

Weight (kg): 0.154

Weight (lbs): 0.339

Fixture Material: Plastic

ELECTRICAL

Lamp Type: LED

Total Output Wattage (W): 14-21

Dimming: Tri-Mode (Non-Dimming and Phase Dimming (120Vac only) and 0-10V Dimming)

Driver Type: Constant Current - Universal

Driver Class: Class 2

Input Voltage (V): 120 - 277

Constant Current (MA): 500

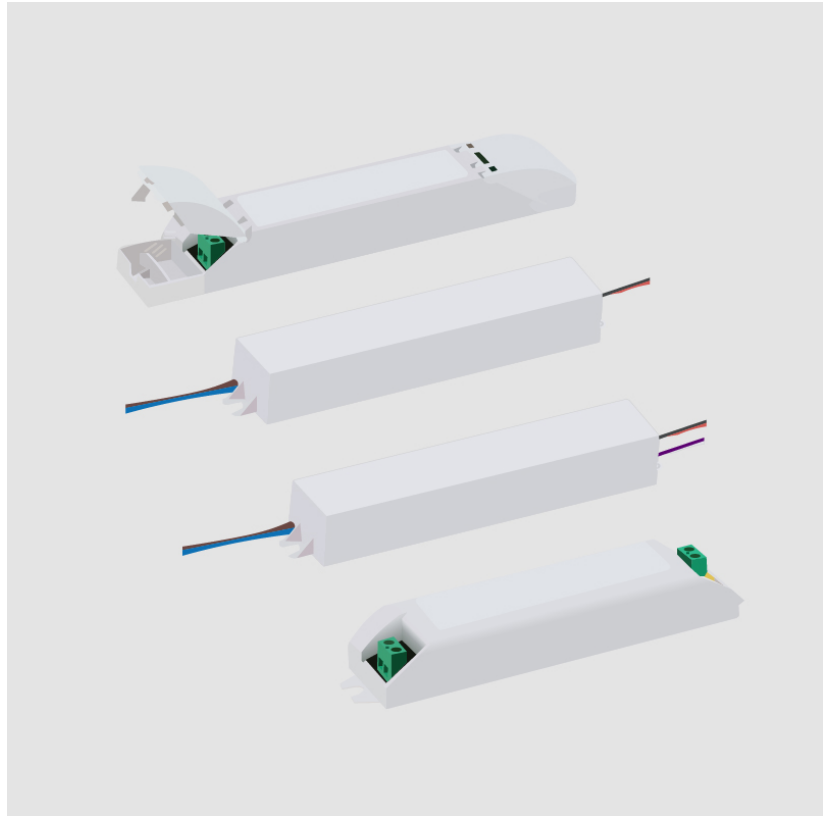
Constant Voltage (V): 24-42

RATINGS AND CERTIFICATIONS

Certified By: UR Listed

Code Compliance: Title 24 commercial Installation

IP rating: Dry / Damp



A3MAGPRO-REC-SYS COMPONENTS

DVO0160SETHR

DESCRIPTION

Hatch - XRC16-0350Z-UNV-I - 0-10Vdc Dimming - 175-350mA - 4.2-16W - 120-277Vac - LED power supply -Used with ENCP5 - Available with IP68-Outdoor Rated -ENCP20, ENCP22

PHYSICAL

Length (mm): 101.6

Length (in): 4

Width (mm): 48.3

Width (in): 1 ²⁹/₃₂

Height (mm): 33.1

Height (in): 1 ¹⁹/₆₄

Weight (kg): 0.26

Weight (lbs): 0.57

Fixture Material: Plastic

ELECTRICAL

Lamp Type: LED

Input Wattage (W): 19

Total Output Wattage (W): 4.2-16

Dimming: 0-10V Dimming

Driver Type: Constant Current - Universal

Driver Class: Class 2

Input Voltage (V): 120 - 277

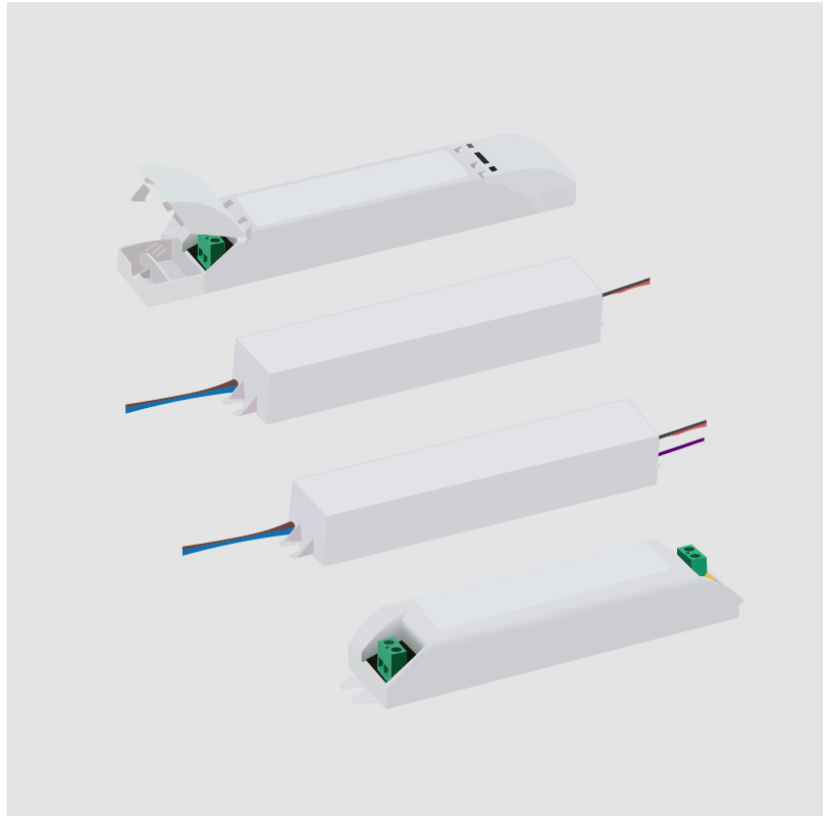
Constant Current (MA): 175-350

Constant Voltage (V): 24-46

RATINGS AND CERTIFICATIONS

Certified By: UR Listed

IP rating: Dry / Damp



PROJECT	
TYPE	
NOTES	
QUANTITY	
DATE	

A3MAGPRO-REC-SYS COMPONENTS

ENCP1

DESCRIPTION

Empty Metal Enclosure for Driver - IP20 - Indoor Rated

GENERAL

Division: Architectural : Components

PHYSICAL

Shape: Rectangle

Length (mm): 197

Length (in): 7 ¾"

Width (mm): 41

Width (in): 1 ⅝"

Height (mm): 41

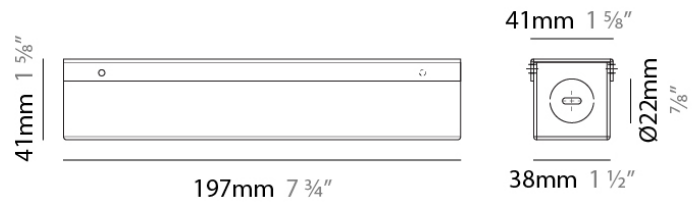
Height (in): 1 ⅝"

Screws: A4 stainless steel

Fixture Material: Metal

RATINGS AND CERTIFICATIONS

IP rating: IP20



PROJECT	
TYPE	
NOTES	
QUANTITY	
DATE	

A3MAGPRO-REC-SYS COMPONENTS

ENCP3

DESCRIPTION

Empty Metal Enclosure for Driver - IP20 - Indoor Rated

GENERAL

Division: Architectural

PHYSICAL

Shape: Rectangle

Length (mm): 155

Length (in): 6 ¹/₈"

Width (mm): 54

Width (in): 2 ¹/₈"

Height (mm): 36

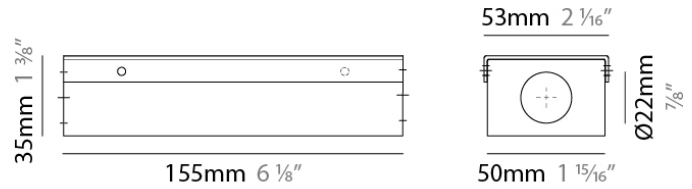
Height (in): 1 ³/₈"

Screws: A4 stainless steel

Fixture Material: Metal

RATINGS AND CERTIFICATIONS

IP rating: IP20



A3MAGPRO-REC-SYS COMPONENTS

ENCP4

DESCRIPTION

Empty Metal Enclosure for Driver - IP20 - Indoor Rated

GENERAL

Division: Architectural

PHYSICAL

Shape: Rectangle

Length (mm): 92

Length (in): 3 ⁵/₈

Width (mm): 68

Width (in): 2 ¹¹/₁₆

Height (mm): 40

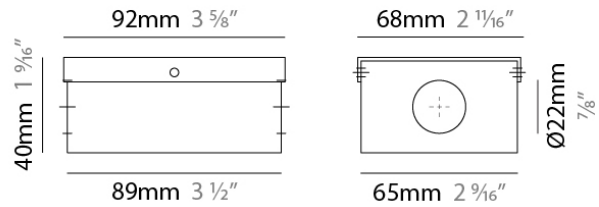
Height (in): 1 ⁹/₁₆

Screws: A4 stainless steel

Fixture Material: Metal

RATINGS AND CERTIFICATIONS

IP rating: IP20



PROJECT	
TYPE	
NOTES	
QUANTITY	
DATE	

A3MAGPRO-REC-SYS COMPONENTS

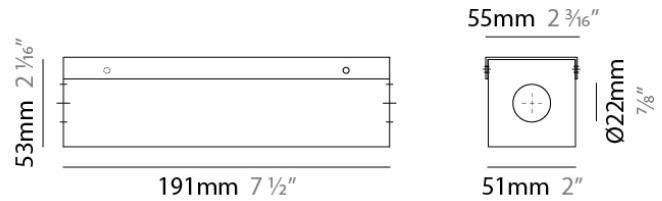
ENCP5

DESCRIPTION
Empty Metal Enclosure for Driver - IP20 - Indoor Rated

GENERAL
Division: Architectural

PHYSICAL
Shape: Rectangle
Length (mm): 191
Length (in): 7 1/2
Width (mm): 55
Width (in): 2 3/16
Height (mm): 54
Height (in): 2 1/8
Fixture Material: Metal

RATINGS AND CERTIFICATIONS
IP rating: IP20



LEGEND

	floor-mounted		pivotable		special LED (upon request) RGB, RGBW, tunable, gold+, meat+, art+, fashion+
	wall and ceiling: recessed and surface mounted		rotating		warm dim / natural dimming LED
	ceiling-mounted and wall-mounted		illuminate tilted		rechargeable battery powered
	wall-mounted		color of suspension cable		fixture with natural vivid LED (upon request)
	omni-directional light distribution		length of suspension cable		color rendering index
	direct light distribution		reflector degree selection		color temperature
	direct/indirect light distribution		super spot		lumen (luminous flux)
	indirect light distribution		lens		efficacy (lumens per watt)
	asymmetric light distribution		lens pack		Unified Glare Rating (UGR) range from 5-40
	aura light distribution		shine ring		marine grade (AISI 316 stainless steel)
	round wall or ceiling cut-out		integrated shine ring with diffuser		walk on
	square wall or ceiling cut-out		free individual colors 01-29		drive on
	the supplied jig specifies the cutout dimensions		individual colors: 00 (free of charge), 01-25 (extra charge)		Dark Sky Compliance
	minimum distance (meters) lamp - object		luminaire part to be colored (F1)		Americans with Disabilities Act (less than 4" off the wall located between 27"-84" from floor)
	recessed depth		luminaire part to be colored (F2)		lamp protected against explosion
	ceiling thickness in mm		luminaire part to be colored (F3)		blown glass using traditional methods by master glass blower
	ceiling thickness selection		luminaire part to be colored (F4)		acoustic material
	dimmable DP (phase), DV (0-10V), DD (dali), DS (step-dim)		luminaire part to be colored (F5)		protection class I, protection insulation
	included or excluded LED driver/transformer/control gear		color of 3-circuit adaptor		protection class II, protection insulation
	separately switchable		indirect diffuser		ETL Certified to UL and CSA Standards
	sensor		direct diffuser		UL Certified to UL and CSA Standards
	remote control		ball-proof (upon request)		CSA Certified to UL and CSA Standards
	available upon request		accessory		Certified for North American Standards

IP RATING

	protected against ingress of solid bodies greater than 12.5mm (finger)
	protected against ingress of solid bodies greater than 2.5mm protected against sprays of water up to 60 degrees from the vertical (rain)
	protected against ingress of solid bodies greater than 1mm (wire) no protection against the ingress of moisture
	protected against ingress of solid bodies greater than 1mm (wire) protected against sprays of water up to 60 degrees from the vertical (rain)
	protected against ingress of solid bodies greater than 1mm (wire) protected against water splashed from all directions
	protected against limited ingress of dust (wet rooms/covered outdoor areas) protected against water splashed from all directions
	protected against ingress of dust protected against jets of water
	protected against ingress of dust protected against powerful jets of water or heavy seas
	protected against ingress of dust protected against immersion of water between 15cm - 1m for 30 minutes
	protected against ingress of dust protected against immersion of water under pressure for long periods

IK RATING

	protected against 0.14 joules impact (equivalent to 0.25kg mass dropped from 56mm above the surface)
	protected against 0.2 joules impact (equivalent to 0.25kg mass dropped from 80mm above the surface)
	protected against 0.35 joules impact (equivalent to 0.25kg mass dropped from 140mm above the surface)
	protected against 0.5 joules impact (equivalent to 0.25kg mass dropped from 200mm above the surface)
	protected against 0.7 joules impact (equivalent to 0.25kg mass dropped from 280mm above the surface)
	protected against 1 joules impact (equivalent to 0.25kg mass dropped from 400mm above the surface)
	protected against 2 joules impact (equivalent to 0.5kg mass dropped from 400mm above the surface)
	protected against 5 joules impact (equivalent to 1.7kg mass dropped from 300mm above the surface)
	protected against 10 joules impact (equivalent to 5.0kg mass dropped from 200mm above the surface)
	protected against 20 joules impact (equivalent to 5.0kg mass dropped from 400mm above the surface)