

PROJECT
TYPE
NOTES
QUANTITY
DATE

A86539-

DESCRIPTION

Bronx - 510mm Profile with Polycarbonate Diffuser

GENERAL

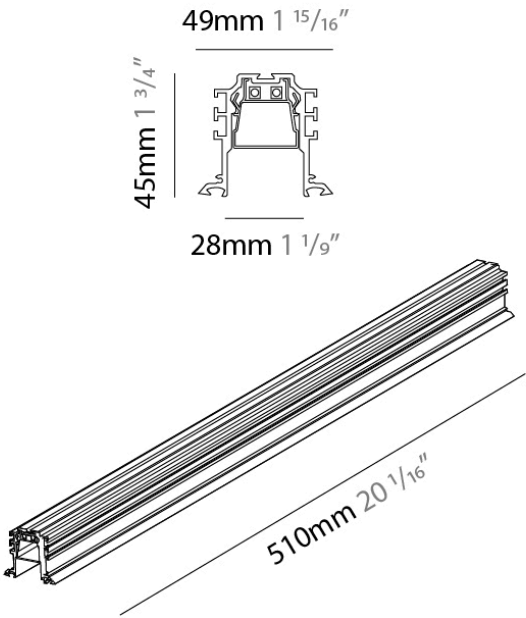
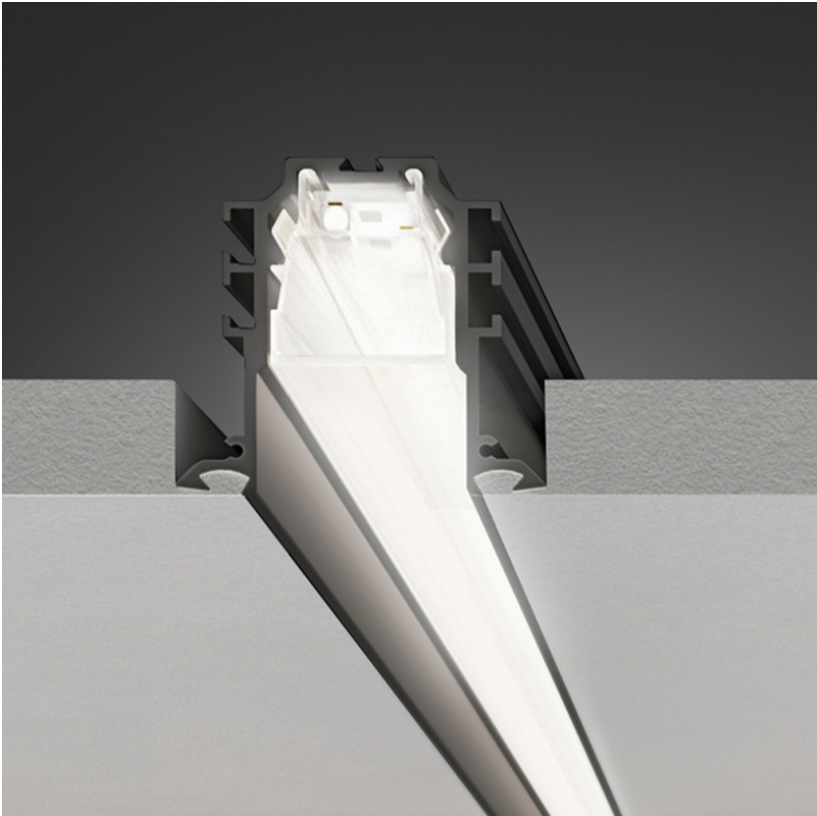
Series: Bronx
Brand: Panzeri
Division: Architectural
Mounting Type: Recessed
Mounting Location: Ceiling
Subcategory: Profile

PHYSICAL

Shape: Rectangle
Length (mm): 510
Length (in): 20 1⁄16
Width (mm): 49
Width (in): 1 15⁄16
Height (mm): 45
Height (in): 1 3⁄4
Light Distribution: Direct
Weight (kg): 0.46
Weight (lbs): 1.01
Diffuser: Polycarbonate - Opal
Fixture Finish: WHI / BLK
Fixture Material: Aluminum
Cut-out Measurements: Exterior - 510mm / 20 1⁄16" Interior - 50mm / 1 15⁄16"

RATINGS AND CERTIFICATIONS

Certified By: Certified for North American Standards
IP rating: IP20



PROJECT	
TYPE	
NOTES	
QUANTITY	
DATE	

A86540-

DESCRIPTION

Bronx - 1010mm Profile with Polycarbonate Diffuser

GENERAL

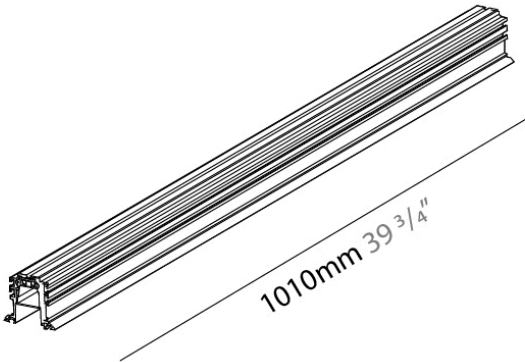
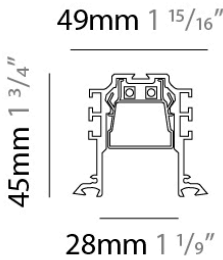
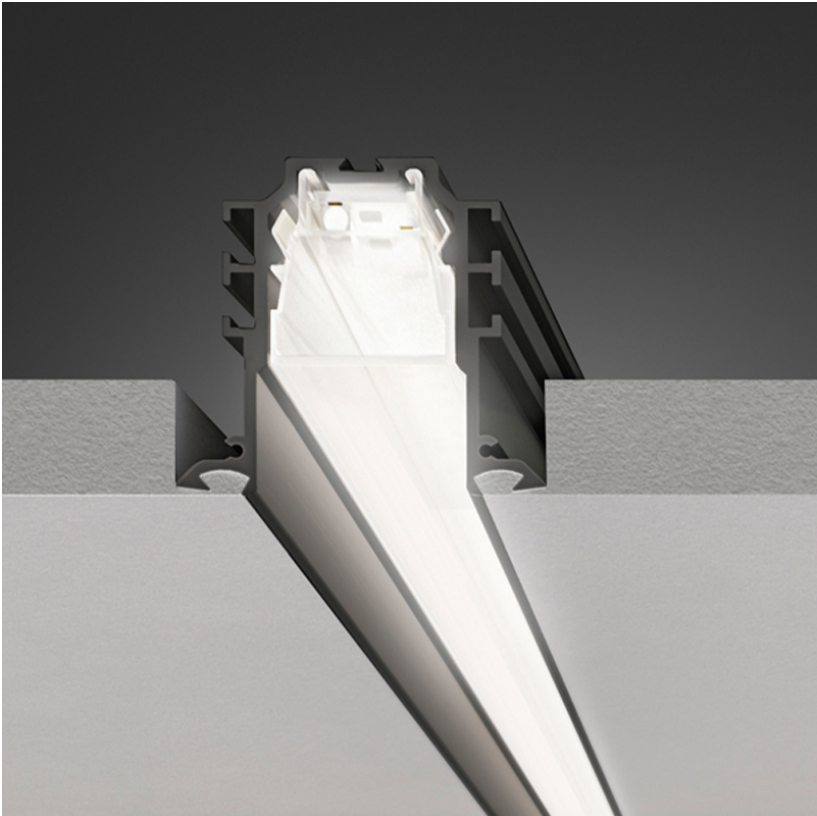
Series: Bronx
Brand: Panzeri
Division: Architectural
Mounting Type: Recessed
Mounting Location: Ceiling
Subcategory: Profile

PHYSICAL

Shape: Rectangle
Length (mm): 1010
Length (in): 39 3/4
Width (mm): 49
Width (in): 1 15/16
Height (mm): 45
Height (in): 1 3/4
Light Distribution: Direct
Weight (kg): 0.88
Weight (lbs): 1.94
Diffuser: Polycarbonate - Opal
Fixture Finish: WHI / BLK
Fixture Material: Aluminum
Cut-out Measurements: Exterior - 510mm / 20 1/16" Interior - 50mm / 1 15/16"

RATINGS AND CERTIFICATIONS

Certified By: Certified for North American Standards
IP rating: IP20



PROJECT	
TYPE	
NOTES	
QUANTITY	
DATE	

A86541-

DESCRIPTION

Bronx - 2010mm Profile with Polycarbonate Diffuser

GENERAL

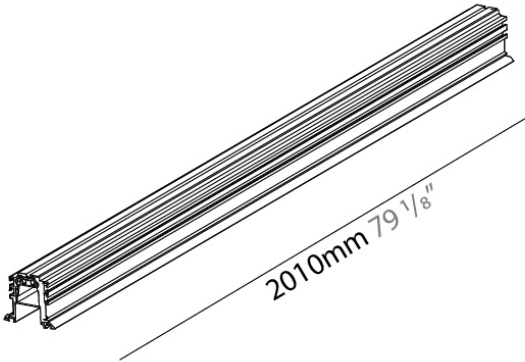
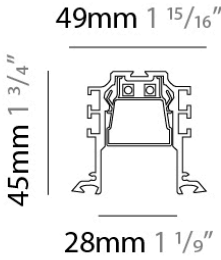
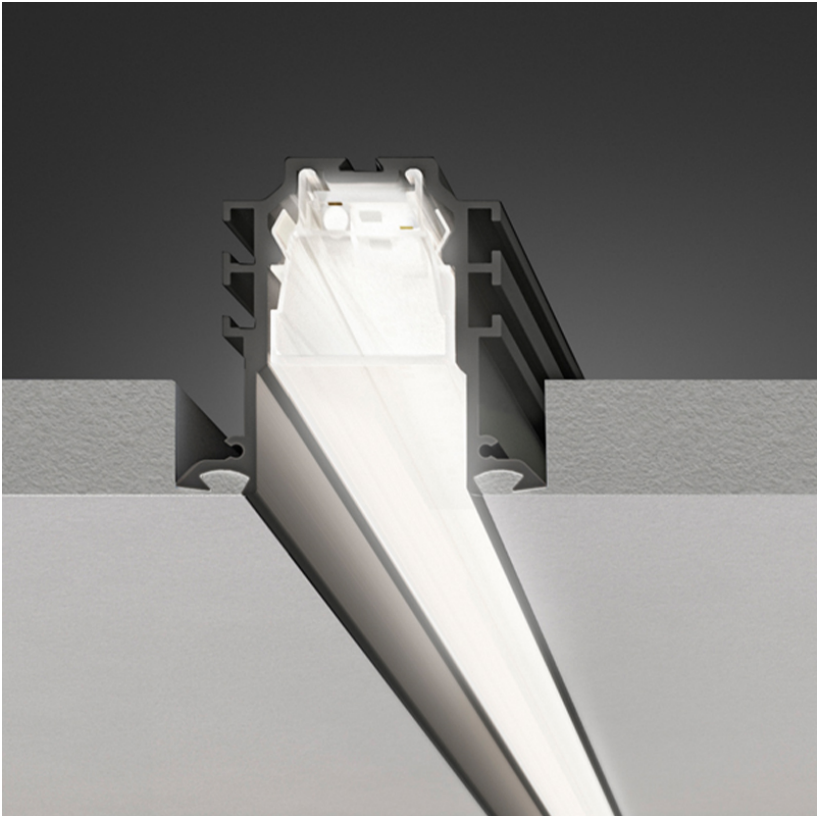
Series: Bronx
Brand: Panzeri
Division: Architectural
Mounting Type: Recessed
Mounting Location: Ceiling
Subcategory: Profile

PHYSICAL

Shape: Rectangle
Length (mm): 2010
Length (in): 79 1⁄8
Width (mm): 49
Width (in): 1 15⁄16
Height (mm): 45
Height (in): 1 3⁄4
Light Distribution: Direct
Weight (kg): 1.74
Weight (lbs): 3.84
Diffuser: Polycarbonate - Opal
Fixture Finish: WHI / BLK
Fixture Material: Aluminum
Cut-out Measurements: Exterior - 510mm / 20 1⁄16" Interior - 50mm / 1 15⁄16"

RATINGS AND CERTIFICATIONS

Certified By: Certified for North American Standards
IP rating: IP20



PROJECT	
TYPE	
NOTES	
QUANTITY	
DATE	

A86542-

DESCRIPTION

Bronx - 3010mm Profile with Polycarbonate Diffuser

GENERAL

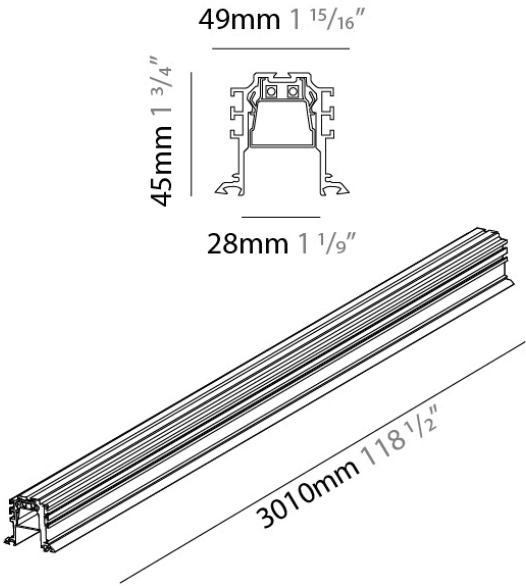
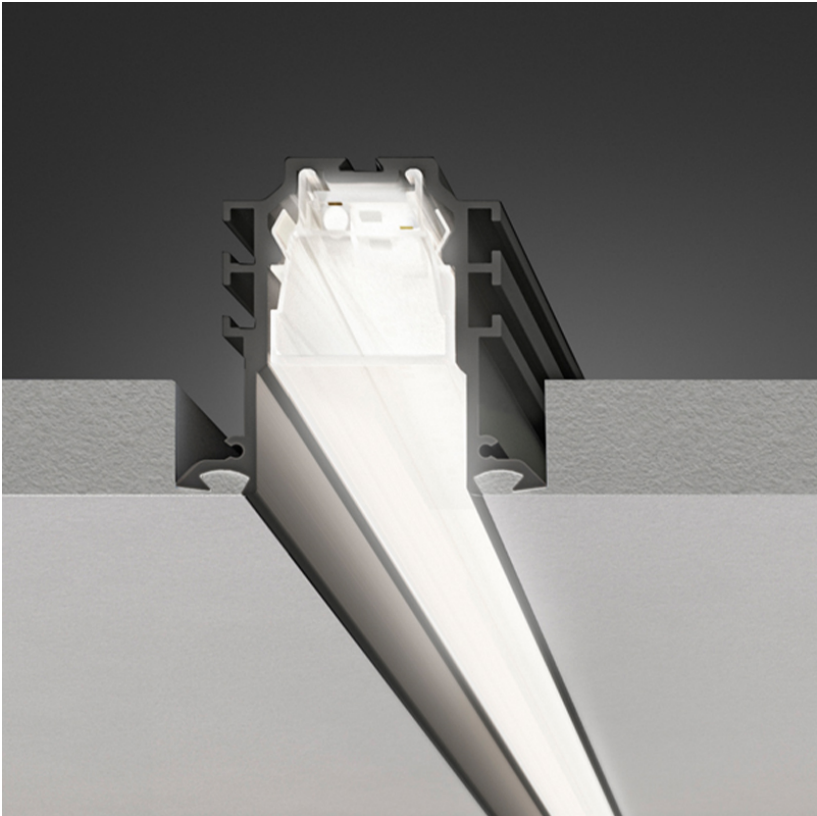
Series: Bronx
Brand: Panzeri
Division: Architectural
Mounting Type: Recessed
Mounting Location: Ceiling
Subcategory: Profile

PHYSICAL

Shape: Rectangle
Length (mm): 3010
Length (in): 118 1/2
Width (mm): 49
Width (in): 1 15/16
Height (mm): 45
Height (in): 1 3/4
Light Distribution: Direct
Weight (kg): 2.61
Weight (lbs): 5.75
Diffuser: Polycarbonate - Opal
Fixture Finish: WHI / BLK
Fixture Material: Aluminum
Cut-out Measurements: Exterior - 510mm / 20 1/16" Interior - 50mm / 1 15/16"

RATINGS AND CERTIFICATIONS

Certified By: Certified for North American Standards
IP rating: IP20



A8BRONX-REC-SYS COMPONENTS RECESSED

PROJECT	
TYPE	
NOTES	
QUANTITY	
DATE	

A86543

DESCRIPTION

Bronx - LED Module - 500mm / 19 11/16" - 8.8W - 3000K - 1140lm
- CRI >90 - 24Vdc

GENERAL

Series: Bronx
Brand: Panzeri
Division: Architectural
Mounting Type: Recessed
Mounting Location: Ceiling

PHYSICAL

Length (mm): 500
Length (in): 19 11/16

ELECTRICAL

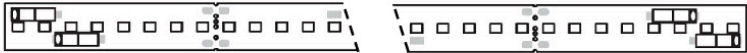
Lamp Type: LED
Input Wattage (W): Max. 14
Total Output Wattage (W): 8.8
Dimming: Non-Dimming / Phase Dimming (120Vac only) / 0-10V Dimming
Driver Included: No
Driver Location: Remote
Driver Type: Constant Voltage - 120 / 277Vac
Driver Class: Class 2
Input Voltage (V): 120 - 277
Output Voltage (V): 24

LED

Delivered Lumen Range: 1000 - 1999 lm
Color Temperature (°K): 3000
Max. Delivered Lumen (lm): 1140
CRI: >90 CRI
Lamp Life (hrs): 80000

RATINGS AND CERTIFICATIONS

Certified By: Certified for North American Standards
IP rating: IP20



500mm 19 11/16"

A8BRONX-REC-SYS COMPONENTS RECESSED

A86544

DESCRIPTION

Bronx - LED Module - 125mm / 4 15/16" - 2.2W - 3000K - 285lm - CRI >90 - 24Vdc

GENERAL

Series: Bronx
Brand: Panzeri
Division: Architectural
Mounting Type: Recessed
Mounting Location: Ceiling

PHYSICAL

Length (mm): 125
Length (in): 4 15/16

ELECTRICAL

Lamp Type: LED
Input Wattage (W): Max. 3.5
Total Output Wattage (W): 2.2
Dimming: Non-Dimming / Phase Dimming (120Vac only) / 0-10V Dimming
Driver Included: No
Driver Location: Remote
Driver Type: Constant Voltage - 120 / 277Vac
Driver Class: Class 2
Input Voltage (V): 120 - 277
Output Voltage (V): 24

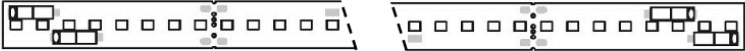
LED

Delivered Lumen Range: 100 - 499 lm
Color Temperature (°K): 3000
Max. Delivered Lumen (lm): 285
CRI: >90 CRI
Lamp Life (hrs): 80000

RATINGS AND CERTIFICATIONS

Certified By: Certified for North American Standards
IP rating: IP20

PROJECT	
TYPE	
NOTES	
QUANTITY	
DATE	



125mm 4 15/16"



A8BRONX-REC-SYS COMPONENTS

A86545-

DESCRIPTION

Bronx - 90° Corner Connector

GENERAL

Series: Bronx
Brand: Panzeri
Division: Architectural

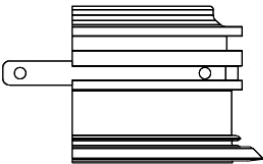
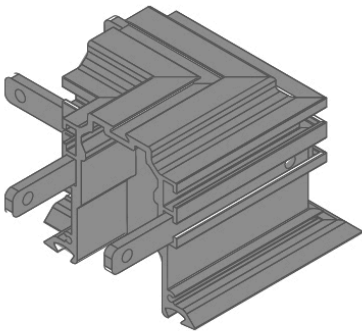
PHYSICAL

Length (mm): 55
Length (in): 2 3/16
Width (mm): 55
Width (in): 2 3/16
Height (mm): 45
Height (in): 1 3/4
Fixture Material: Aluminum

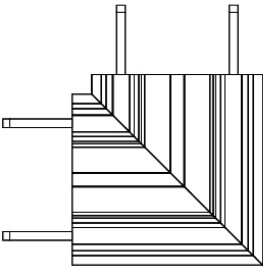
RATINGS AND CERTIFICATIONS

Certified By: Certified for North American Standards
IP rating: IP20

PROJECT	
TYPE	
NOTES	
QUANTITY	
DATE	



55mm 2 3/16"



75mm 2 15/16"

55mm 2 3/16"
75mm 2 15/16"

A8BRONX-REC-SYS COMPONENTS

A86546

DESCRIPTION

Bronx - Linear Connector

GENERAL

Series: Bronx
Brand: Panzeri
Division: Architectural

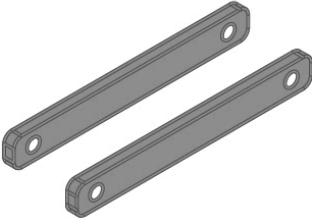
PHYSICAL

Fixture Material: Aluminum

RATINGS AND CERTIFICATIONS

Certified By: Certified for North American Standards
IP rating: IP20

PROJECT
TYPE
NOTES
QUANTITY
DATE



A8BRONX-REC-SYS COMPONENTS

A86547-

DESCRIPTION

Bronx - Pair of End Caps with Screws

GENERAL

Series: Bronx
Brand: Panzeri
Division: Architectural

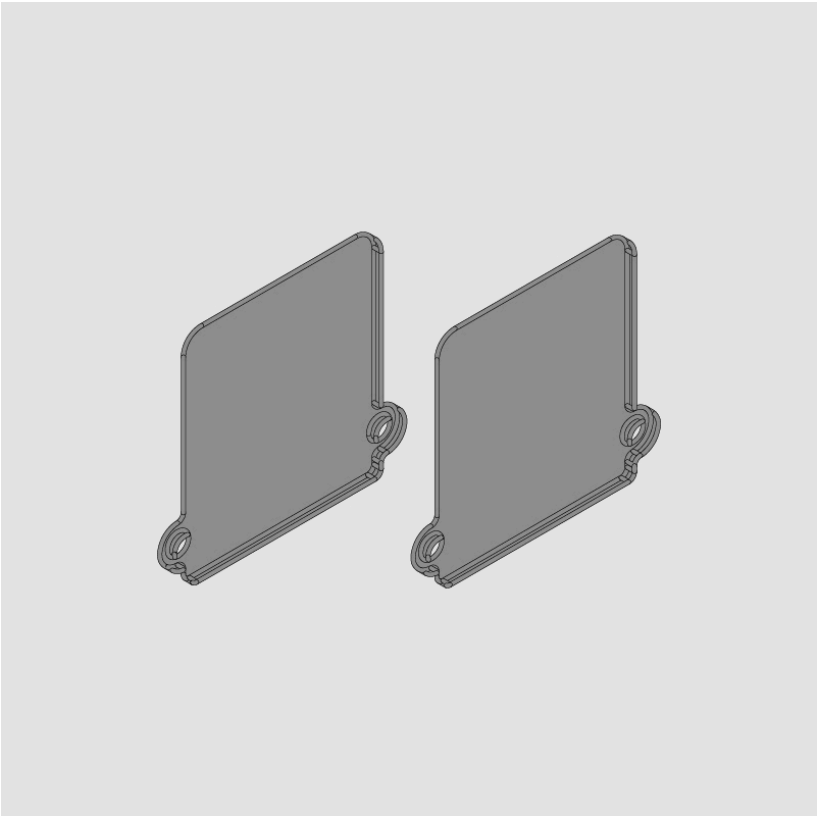
PHYSICAL

Shape: Rectangle
Length (mm): 55
Length (in): 2 3⁄16
Width (mm): 55
Width (in): 2 3⁄16
Height (mm): 45
Height (in): 1 3⁄4
Fixture Finish: WHI / BLK
Fixture Material: Aluminum

RATINGS AND CERTIFICATIONS

Certified By: Certified for North American Standards
IP rating: IP20

PROJECT
TYPE
NOTES
QUANTITY
DATE



A8BRONX-REC-SYS COMPONENTS

A86548

DESCRIPTION

Bronx - Pair of Brackets for False Ceiling Installation

GENERAL

Series: Bronx
Brand: Panzeri
Division: Architectural

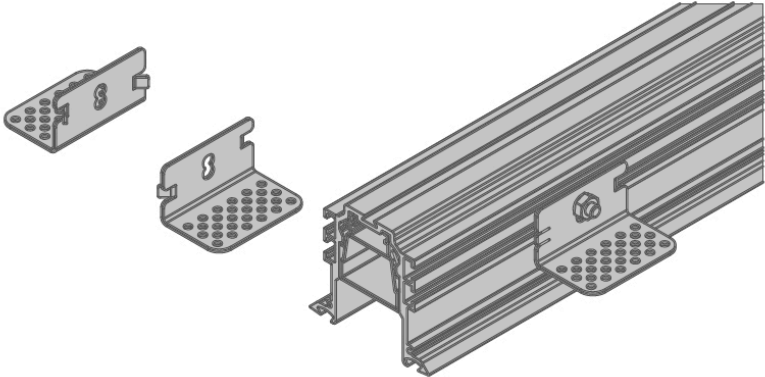
PHYSICAL

Fixture Material: Aluminum

RATINGS AND CERTIFICATIONS

Certified By: Certified for North American Standards
IP rating: IP20

PROJECT
TYPE
NOTES
QUANTITY
DATE



A8BRONX-REC-SYS COMPONENTS

DND1000024EV

DESCRIPTION

ERP VLM100W-24 - 100W - 24Vdc - 120-277Vac - Non-dimming - LED power supply -Used with ENCP12 -Available with IP68- Outdoor Rated -ENCP20, ENCP22

GENERAL

Division: Architectural : Components : LED Drivers

PHYSICAL

Length (mm): 151

Length (in): 5 15/16

Width (mm): 27.3

Width (in): 1 5/64

Height (mm): 19.8

Height (in): 25/32

Weight (kg): 0.159

Weight (lbs): 0.35

Fixture Material: Aluminum

ELECTRICAL

Lamp Type: LED

Input Wattage (W): 103

Total Output Wattage (W): 4.8-96

Dimming: Non-Dimmable

Driver Class: Class 2

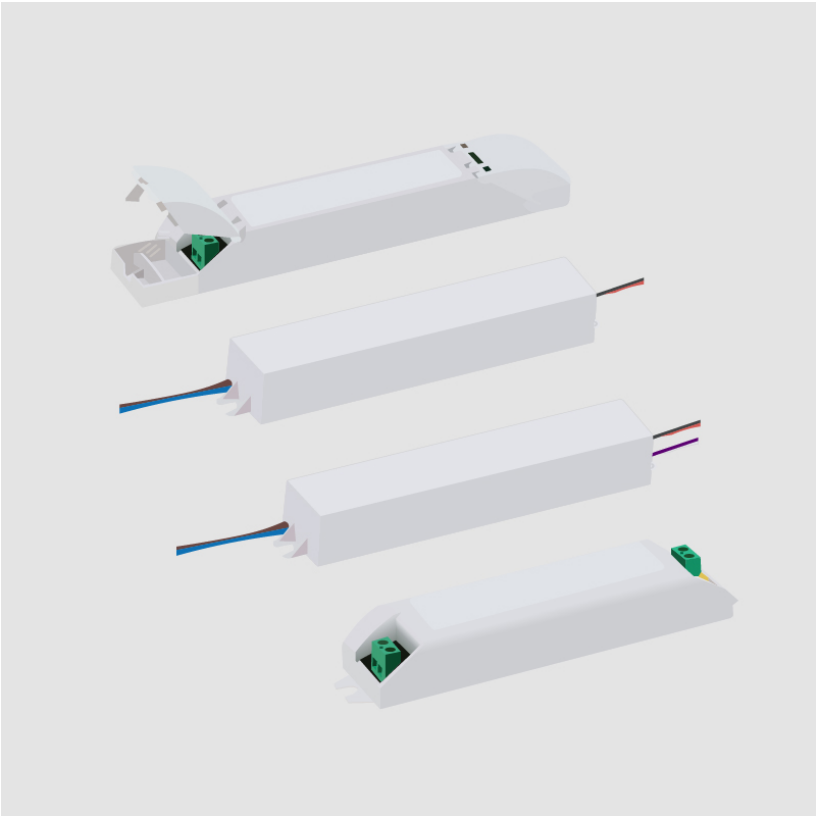
Input Voltage (V): 120 - 277

Output Voltage (V): 24

LED

Efficiency (%): <92

PROJECT
TYPE
NOTES
QUANTITY
DATE



A8BRONX-REC-SYS COMPONENTS

DPH0300024EL

DESCRIPTION

EMCOD - MLE30-24DC - Phase dimming (LE / TE) @120Vac only - 1.2-30W - 24Vdc - 120-277Vac - (Outdoor) LED power supply w/UL approved enclosure

GENERAL

Division: Architectural : Components : LED Drivers

PHYSICAL

Length (mm): 165.1

Length (in): 6 1/2

Width (mm): 91.95

Width (in): 3 5/8

Height (mm): 25.9

Height (in): 1

Weight (kg): 0.09

Weight (lbs): 0.21

Fixture Material: Metal

ELECTRICAL

Lamp Type: LED

Total Output Wattage (W): 1.5-30

Dimming: Phase Dimming (120Vac Only)

Driver Type: Constant Voltage - Universal

Driver Class: Class 2

Input Voltage (V): 120 - 277

Output Voltage (V): 24

LED

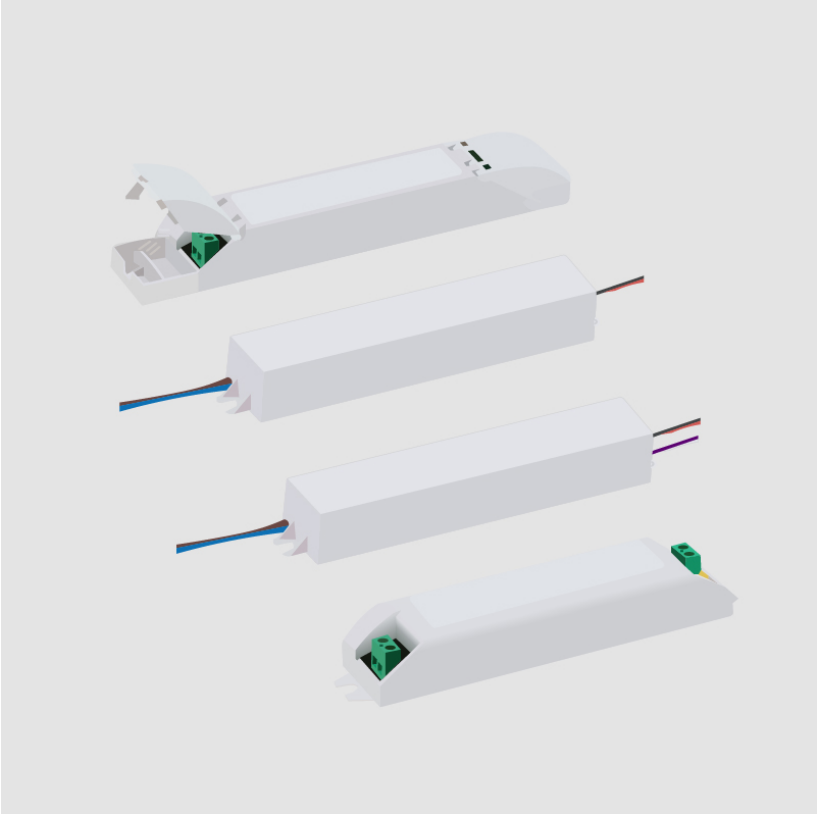
Efficiency (%): 90

RATINGS AND CERTIFICATIONS

Certified By: UL Listed

IP rating: Dry / Damp

PROJECT
TYPE
NOTES
QUANTITY
DATE



A8BRONX-REC-SYS COMPONENTS

DPH0600024EL

DESCRIPTION

EMCOD - MLE60-24DC - Phase dimming (LE / TE) @120Vac only - 3-60W - 24Vdc - 120-277Vac - (Outdoor) LED power supply w/UL approved enclosure

GENERAL

Division: Architectural : Components : LED Drivers

PHYSICAL

Length (mm): 187.96

Length (in): 7 3⁄8

Width (mm): 91.94

Width (in): 3 5⁄8

Height (mm): 25.9

Height (in): 1

Weight (kg): 0.1

Weight (lbs): 0.24

Fixture Material: Metal

ELECTRICAL

Lamp Type: LED

Total Output Wattage (W): 3-60

Dimming: Phase Dimming (120Vac Only)

Driver Type: Constant Voltage - Universal

Input Voltage (V): 120 - 277

Output Voltage (V): 24

Constant Voltage (V): 24

LED

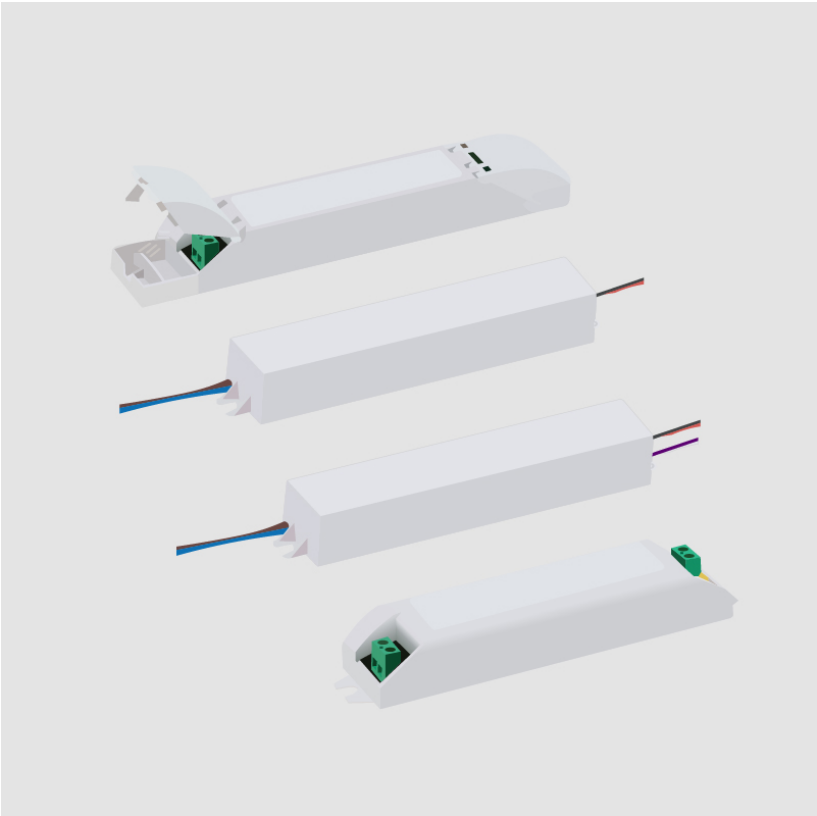
Efficiency (%): 90

RATINGS AND CERTIFICATIONS

Certified By: UL Listed

IP rating: IP67

PROJECT
TYPE
NOTES
QUANTITY
DATE



A8BRONX-REC-SYS COMPONENTS

DPH0960024EL

DESCRIPTION

EMCOD - MLE96-24DC - Phase dimming (LE / TE) @120Vac only - 4.8-96W - 24Vdc - 120-277Vac - (Outdoor) LED power supply w/UL approved enclosure

GENERAL

Division: Architectural : Components : LED Drivers

PHYSICAL

Length (mm): 221

Length (in): 8 45/63

Width (mm): 93

Width (in): 3 71/32

Height (mm): 39

Height (in): 1 17/32

Weight (kg): 0.14

Weight (lbs): 0.3

Fixture Material: Metal

ELECTRICAL

Lamp Type: LED

Total Output Wattage (W): 4.8-96

Dimming: Phase Dimming (120Vac Only)

Driver Type: Constant Voltage - Universal

Driver Class: Class 2

Input Voltage (V): 120 - 277

Output Voltage (V): 24

Constant Voltage (V): 24

LED

Efficiency (%): 90

RATINGS AND CERTIFICATIONS

Certified By: UL Listed

IP rating: IP67

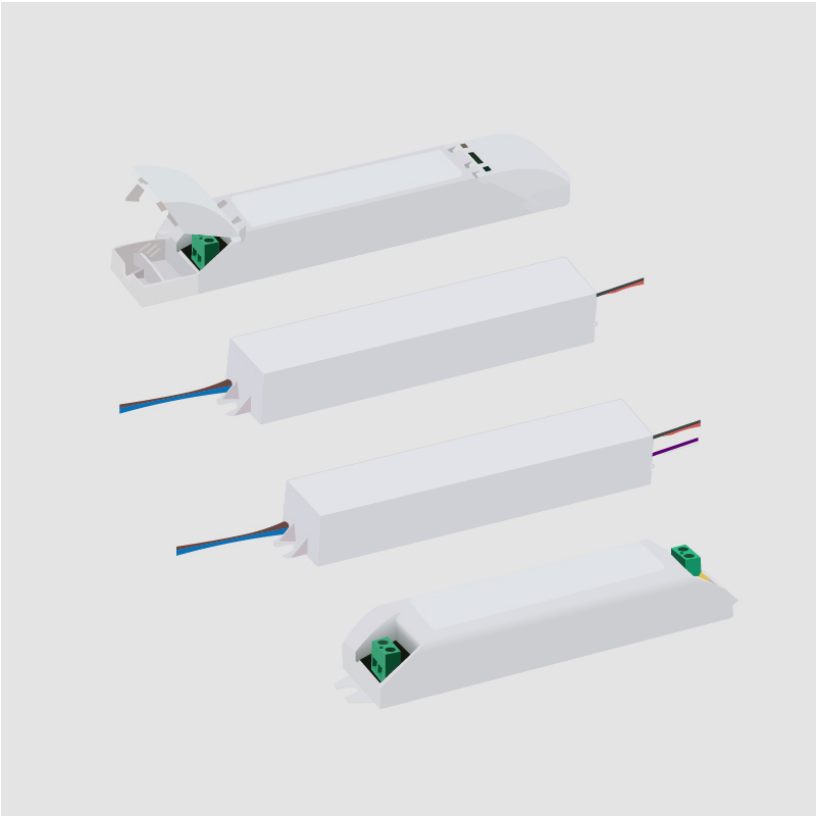
PROJECT

TYPE

NOTES

QUANTITY

DATE



A8BRONX-REC-SYS COMPONENTS

DVO0400024MB

DESCRIPTION

MeanWell - HLG-40H-24B - 1-10Vdc / Resistance / 10V PWM
Dimming - 23.98-40W - 24Vdc - 120-277Vac - LED power supply -
Used with ENCP8 - Available with IP68 - Outdoor Rated -
Enclosure TBD

GENERAL

Division: Architectural : Components : LED Drivers

PHYSICAL

Length (mm): 171

Length (in): 6 ⁴⁷/₆₄

Width (mm): 61

Width (in): 2 ²⁷/₆₄

Height (mm): 37

Height (in): 1 ²⁹/₆₄

Weight (kg): 0.74

Weight (lbs): 1.63

Fixture Material: Metal

ELECTRICAL

Lamp Type: LED

Total Output Wattage (W): 23.98-40

Dimming: 1-10V Dimming to 10%

Driver Type: Constant Voltage - Universal

Driver Class: Class 2

Input Voltage (V): 120 - 277

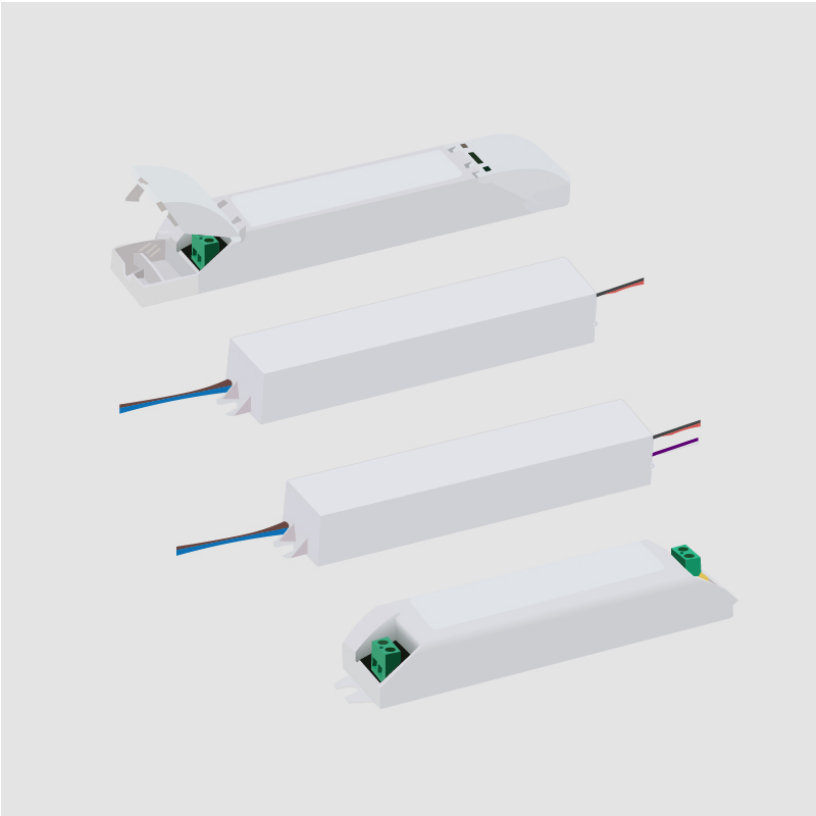
Output Voltage (V): 24

RATINGS AND CERTIFICATIONS

Certified By: UR Listed

IP rating: IP67

PROJECT
TYPE
NOTES
QUANTITY
DATE



A8BRONX-REC-SYS COMPONENTS

DVO0400024MP

DESCRIPTION

MeanWell - PWM-40-24 - 0-10Vdc / Resistance / 10V PWM
Dimming - Dim-to-Off - 14.4-40W - 24Vdc - 120-277Vac - LED
power supply -Used with ENCP8 -Available with IP68 – Outdoor
Rated – Enclosure TBD

PHYSICAL

Length (mm): 150
Length (in): 5 ²⁹/₃₂
Width (mm): 53
Width (in): 2 ⁷/₃₂
Height (mm): 35
Height (in): 1 ³/₆
Weight (kg): 0.49
Weight (lbs): 1.08
Fixture Material: Plastic

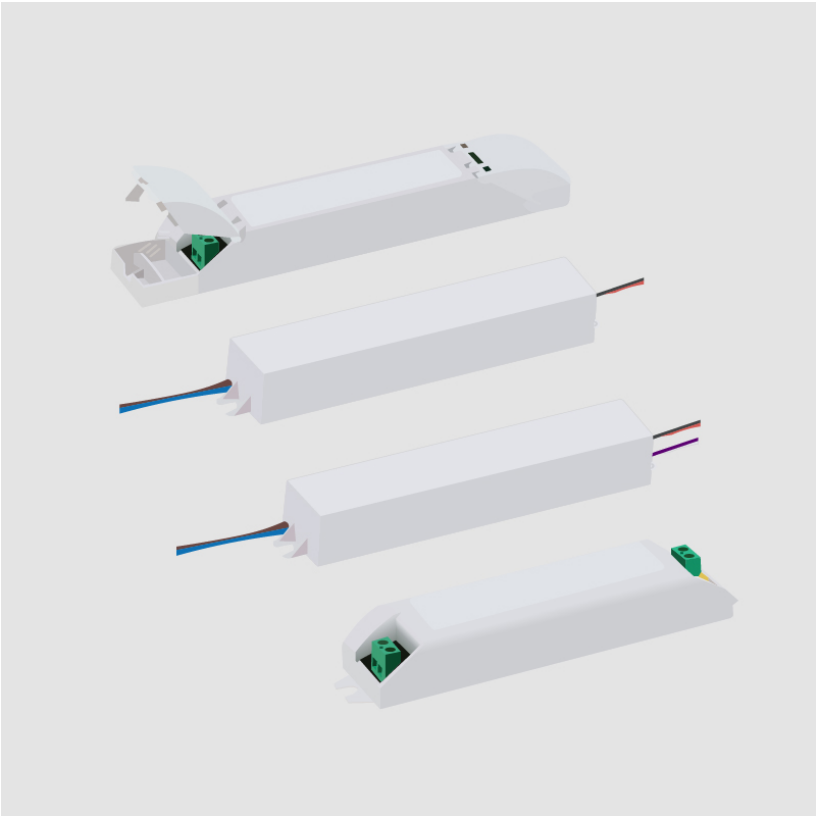
ELECTRICAL

Lamp Type: LED
Input Wattage (W): 45
Total Output Wattage (W): 14.4-40
Dimming: 0-10V Dimming to 0%
Driver Type: Constant Voltage - Universal
Driver Class: Class 2
Input Voltage (V): 120 - 277
Output Voltage (V): 24
Constant Voltage (V): 24

RATINGS AND CERTIFICATIONS

Certified By: UR Listed
IP rating: IP67

PROJECT
TYPE
NOTES
QUANTITY
DATE



A8BRONX-REC-SYS COMPONENTS

DVO0600024MB

DESCRIPTION

MeanWell - HLG-60H-24B - 1-10Vdc / Resistance / 10V PWM
Dimming - 36-60W - 24Vdc - 120-277Vac - LED power supply -
Used with ENCP8 - Available with IP68 - Outdoor Rated -
Enclosure TBD

GENERAL

Division: Architectural : Components : LED Drivers

PHYSICAL

Length (mm): 171

Length (in): 6 ⁴⁷/₆₄

Width (mm): 61.5

Width (in): 2 ¹³/₃₂

Height (mm): 37

Height (in): 1 ²⁹/₆₄

Weight (kg): 0.73

Weight (lbs): 1.6

Fixture Material: Metal

ELECTRICAL

Lamp Type: LED

Total Output Wattage (W): 36-60

Dimming: 1-10V Dimming to 10%

Driver Type: Constant Voltage - Universal

Driver Class: Class 2

Input Voltage (V): 120 - 277

Output Voltage (V): 24

RATINGS AND CERTIFICATIONS

Certified By: UR Listed

IP rating: IP65

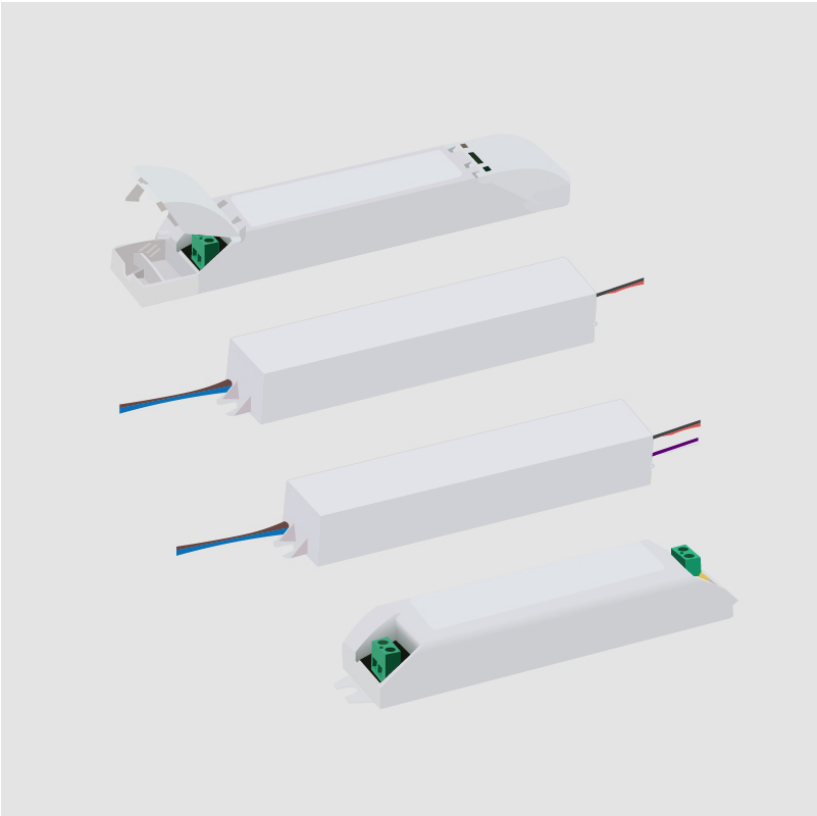
PROJECT

TYPE

NOTES

QUANTITY

DATE



A8BRONX-REC-SYS COMPONENTS

DVO0600024MP

DESCRIPTION

MeanWell - PWM-60-24 - 0-10Vdc / Resistance / 10V PWM signal dimming - Dim-to-Off - 19.2-60W - 24Vdc - 120-277Vac - LED power supply -Used with ENCP8 -Available with IP68 – Outdoor Rated – Enclosure TBD

PHYSICAL

Shape: Rectangle
Length (mm): 150
Length (in): 5 7/8
Width (mm): 53
Width (in): 2 1/16
Height (mm): 35
Height (in): 1 3/8
Weight (kg): 0.49
Fixture Material: Plastic

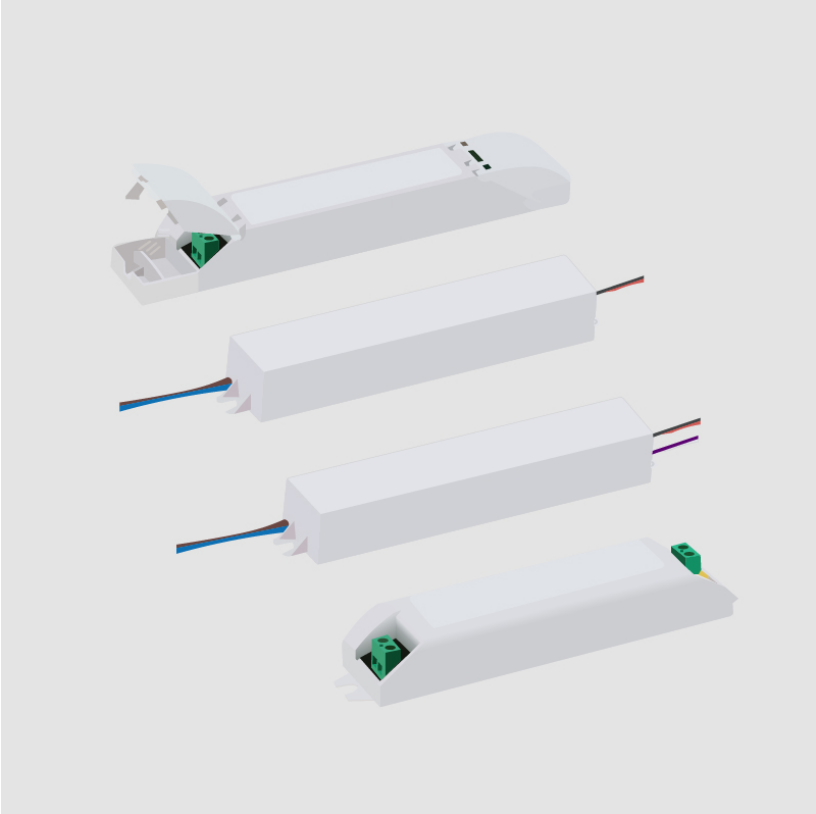
ELECTRICAL

Lamp Type: LED
Input Wattage (W): 67.4
Total Output Wattage (W): 60
Dimming: 0-10V Dimming to 0%
Driver Type: Constant Voltage - 120-277Vac / Type HL
Driver Class: Class 2
Input Voltage (V): Universal
Constant Voltage (V): 24 dc

RATINGS AND CERTIFICATIONS

Certified By: UR Listed
IP rating: IP67

PROJECT
TYPE
NOTES
QUANTITY
DATE



A8BRONX-REC-SYS COMPONENTS

DVO0900024MP

DESCRIPTION

MeanWell - PWM-90-24 - 0-10Vdc / Resistance / 10V PWM
Dimming - Dim-to-Off - 90W - 24Vdc - 120-277Vac - LED power
supply

GENERAL

Division: Architectural : Components : LED Drivers

PHYSICAL

Length (mm): 171

Length (in): 6 47/64

Width (mm): 63

Width (in): 2 31/64

Height (mm): 37

Height (in): 1 29/64

Weight (kg): 0.77

Weight (lbs): 1.69

Fixture Material: Plastic

ELECTRICAL

Lamp Type: LED

Input Wattage (W): 99

Total Output Wattage (W): 22.8-90

Dimming: 0-10V Dimming to 0%

Driver Type: Constant Voltage - Universal

Driver Class: Class 2

Input Voltage (V): 120 - 277

Output Voltage (V): 24

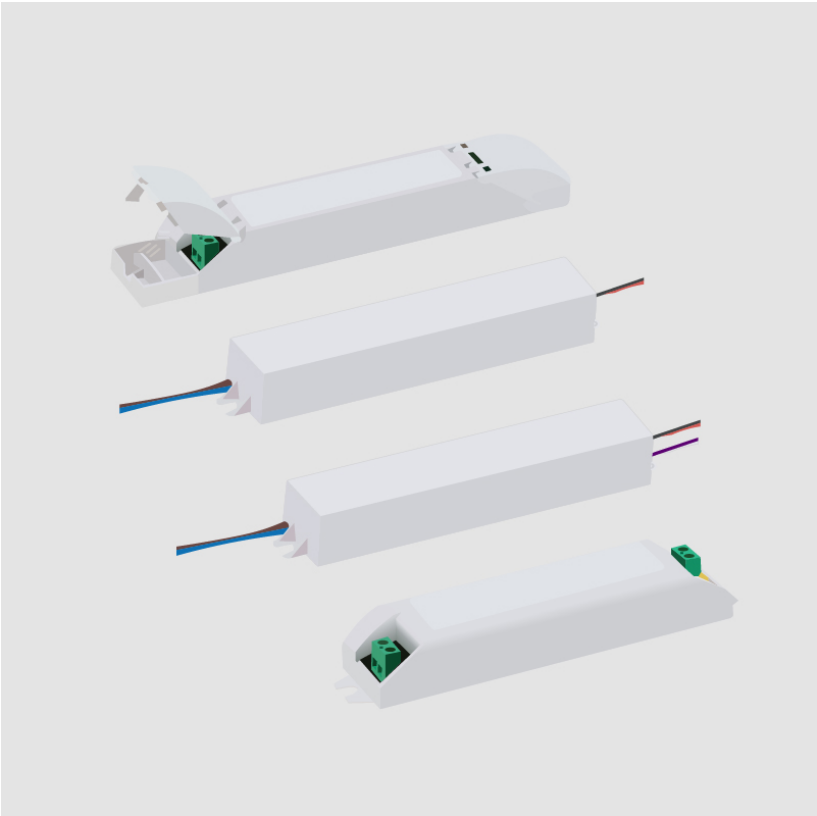
Constant Voltage (V): 24

RATINGS AND CERTIFICATIONS

Certified By: UR Listed

IP rating: IP67

PROJECT
TYPE
NOTES
QUANTITY
DATE



A8BRONX-REC-SYS COMPONENTS

DVO1000024MB

DESCRIPTION

MeanWell - HLG-100H-24B - 1-10Vdc / Resistance / 10V PWM Dimming - 96W - 24Vdc - 120-277Vac - LED power supply -Used with ENCP8 -Available with IP68 – Outdoor Rated – Enclosure TBD

GENERAL

Division: Architectural : Components : LED Drivers

PHYSICAL

Length (mm): 220

Length (in): 8 21/32

Width (mm): 68

Width (in): 2 43/64

Height (mm): 39

Height (in): 1 17/32

Weight (kg): 1.12

Weight (lbs): 2.46

Fixture Material: Metal

ELECTRICAL

Lamp Type: LED

Input Wattage (W): 107

Total Output Wattage (W): 28.8-96

Dimming: 1-10V Dimming to 10%

Driver Type: Constant Voltage - Universal

Driver Class: Class 2

Input Voltage (V): 120 - 277

Output Voltage (V): 24

Constant Voltage (V): 24

RATINGS AND CERTIFICATIONS

Certified By: UR Listed

IP rating: IP67

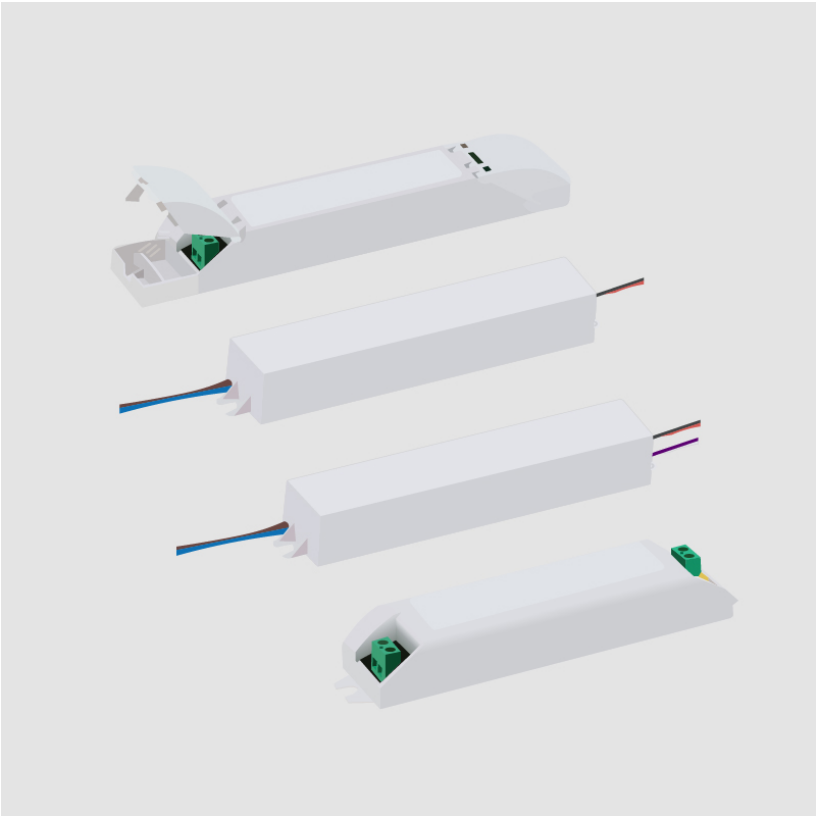
PROJECT

TYPE

NOTES

QUANTITY

DATE



A8BRONX-REC-SYS COMPONENTS

PROJECT
TYPE
NOTES
QUANTITY
DATE

ENCP1

DESCRIPTION

Empty Metal Enclosure for Driver - IP20 - Indoor Rated

GENERAL

Division: Architectural : Components

PHYSICAL

Shape: Rectangle

Length (mm): 197

Length (in): 7 ¾

Width (mm): 41

Width (in): 1 ⅝

Height (mm): 41

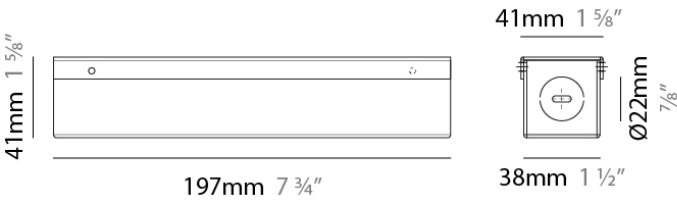
Height (in): 1 ⅝

Screws: A4 stainless steel

Fixture Material: Metal

RATINGS AND CERTIFICATIONS

IP rating: IP20



A8BRONX-REC-SYS COMPONENTS

PROJECT	
TYPE	
NOTES	
QUANTITY	
DATE	

ENCP8

DESCRIPTION

Empty Metal Enclosure for Driver - IP20 - Indoor Rated

GENERAL

Division: Architectural : Components

PHYSICAL

Shape: Rectangle

Length (mm): 305

Length (in): 12

Width (mm): 92

Width (in): 3 5⁄8

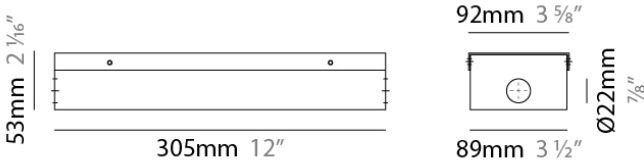
Height (mm): 54

Height (in): 2 1⁄8

Fixture Material: Metal

RATINGS AND CERTIFICATIONS

IP rating: IP20



LEGEND

	floor-mounted		pivotal		special LED (upon request) RGB, RGBW, tunable, gold+, meat+, art+, fashion+
	wall and ceiling: recessed and surface mounted		rotating		warm dim / natural dimming LED
	ceiling-mounted and wall-mounted		illuminate tilted		rechargeable battery powered
	wall-mounted		color of suspension cable		fixture with natural vivid LED (upon request)
	omni-directional light distribution		length of suspension cable		color rendering index
	direct light distribution		reflector degree selection		color temperature
	direct/indirect light distribution		super spot		lumen (luminous flux)
	indirect light distribution		lens		efficacy (lumens per watt)
	asymmetric light distribution		lens pack		Unified Glare Rating (UGR) range from 5-40
	aura light distribution		shine ring		marine grade (AISI 316 stainless steel)
	round wall or ceiling cut-out		integrated shine ring with diffuser		walk on
	square wall or ceiling cut-out		free individual colors 01-29		drive on
	the supplied jig specifies the cutout dimensions		individual colors: 00 (free of charge), 01-25 (extra charge)		Dark Sky Compliance
	minimum distance (meters) lamp - object		luminaire part to be colored (F1)		Americans with Disabilities Act (less than 4" off the wall located between 27"-84" from floor)
	recessed depth		luminaire part to be colored (F2)		lamp protected against explosion
	ceiling thickness in mm		luminaire part to be colored (F3)		blown glass using traditional methods by master glass blower
	ceiling thickness selection		luminaire part to be colored (F4)		acoustic material
	dimmable DP (phase), DV (0-10V), DD (dali), DS (step-dim)		luminaire part to be colored (F5)		protection class I, protection insulation
	included or excluded LED driver/transformer/control gear		color of 3-circuit adaptor		protection class II, protection insulation
	separately switchable		indirect diffuser		ETL Certified to UL and CSA Standards
	sensor		direct diffuser		UL Certified to UL and CSA Standards
	remote control		ball-proof (upon request)		CSA Certified to UL and CSA Standards
	available upon request		accessory		Certified for North American Standards

IP RATING

	protected against ingress of solid bodies greater than 12.5mm (finger)
	protected against ingress of solid bodies greater than 2.5mm protected against sprays of water up to 60 degrees from the vertical (rain)
	protected against ingress of solid bodies greater than 1mm (wire) no protection against the ingress of moisture
	protected against ingress of solid bodies greater than 1mm (wire) protected against sprays of water up to 60 degrees from the vertical (rain)
	protected against ingress of solid bodies greater than 1mm (wire) protected against water splashed from all directions
	protected against limited ingress of dust (wet rooms/covered outdoor areas) protected against water splashed from all directions
	protected against ingress of dust protected against jets of water
	protected against ingress of dust protected against powerful jets of water or heavy seas
	protected against ingress of dust protected against immersion of water between 15cm - 1m for 30 minutes
	protected against ingress of dust protected against immersion of water under pressure for long periods

IK RATING

	protected against 0.14 joules impact (equivalent to 0.25kg mass dropped from 56mm above the surface)
	protected against 0.2 joules impact (equivalent to 0.25kg mass dropped from 80mm above the surface)
	protected against 0.35 joules impact (equivalent to 0.25kg mass dropped from 140mm above the surface)
	protected against 0.5 joules impact (equivalent to 0.25kg mass dropped from 200mm above the surface)
	protected against 0.7 joules impact (equivalent to 0.25kg mass dropped from 280mm above the surface)
	protected against 1 joules impact (equivalent to 0.25kg mass dropped from 400mm above the surface)
	protected against 2 joules impact (equivalent to 0.5kg mass dropped from 400mm above the surface)
	protected against 5 joules impact (equivalent to 1.7kg mass dropped from 300mm above the surface)
	protected against 10 joules impact (equivalent to 5.0kg mass dropped from 200mm above the surface)
	protected against 20 joules impact (equivalent to 5.0kg mass dropped from 400mm above the surface)