

D96043 COMPONENTS TRACK

D99021-

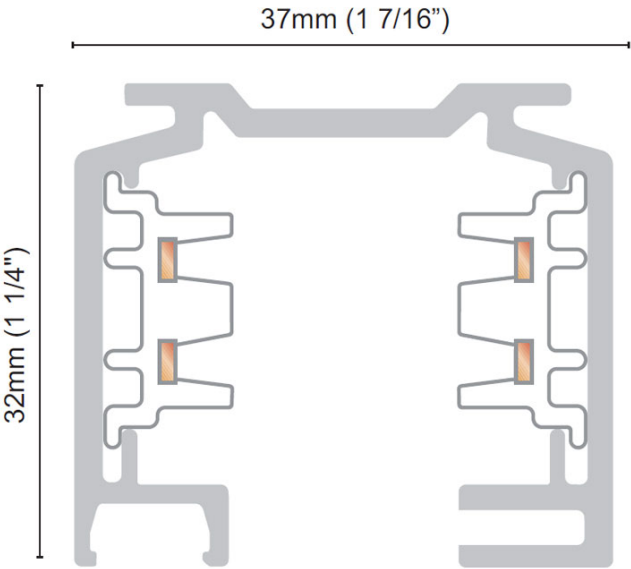
DESCRIPTION
4' - 2-Circuit Surface Track -

GENERAL
Brand: Milan
Division: Design
Mounting Type: Track

PHYSICAL
Length (mm): 1219
Length (in): 48.0
Width (mm): 36
Width (in): 1 7/16
Height (mm): 32
Height (in): 1 1/4
Fixture Finish: WHI / BLK / SIL
Fixture Material: Metal

RATINGS AND CERTIFICATIONS
Certified By: Certified for North American Standards
IP rating: IP20

PROJECT _____
TYPE _____
NOTES _____
QUANTITY _____
DATE _____



D96043 COMPONENTS TRACK

D99024-

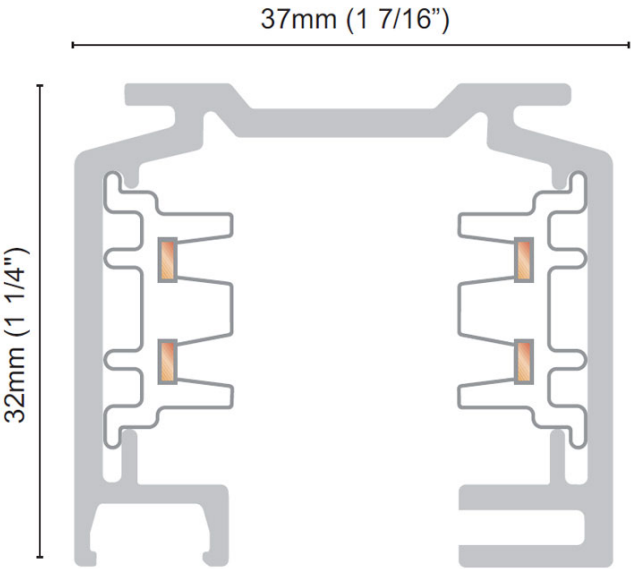
DESCRIPTION
8' - 2-Circuit Surface Track

GENERAL
Brand: Milan
Division: Design
Mounting Type: Track

PHYSICAL
Length (mm): 2438
Length (in): 96.0
Width (mm): 36
Width (in): 1 7/16
Height (mm): 32
Height (in): 1 1/4
Fixture Finish: WHI / BLK / SIL
Fixture Material: Metal

RATINGS AND CERTIFICATIONS
Certified By: Certified for North American Standards
IP rating: IP20

PROJECT _____
TYPE _____
NOTES _____
QUANTITY _____
DATE _____



D96043 COMPONENTS TRACK

D99027-

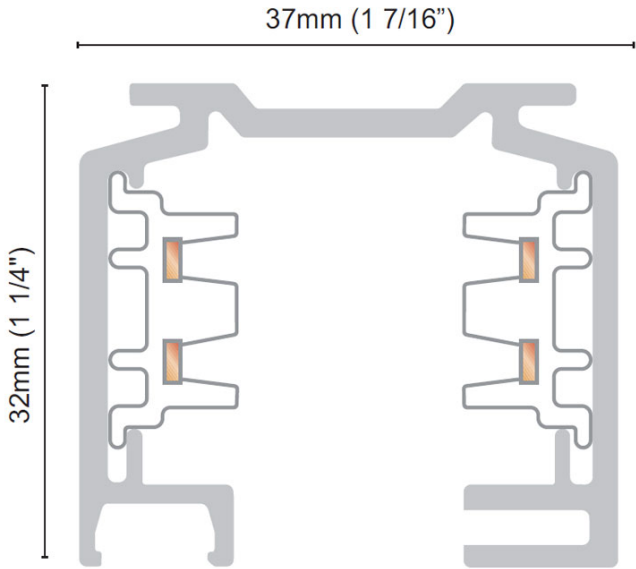
DESCRIPTION
12' - 2-Circuit Surface Track

GENERAL
Brand: Milan
Division: Design
Mounting Type: Track

PHYSICAL
Length (mm): 3658
Length (in): 120.0
Width (mm): 36
Width (in): 1 7/16
Height (mm): 32
Height (in): 1 1/4
Fixture Finish: WHI / BLK / SIL
Fixture Material: Metal

RATINGS AND CERTIFICATIONS
Certified By: Certified for North American Standards
IP rating: IP20

PROJECT _____
TYPE _____
NOTES _____
QUANTITY _____
DATE _____



D96043 COMPONENTS TRACK

D99066-

DESCRIPTION

Track - 2-Circuit - T Coupler - Inside Right

GENERAL

Brand: Milan

Division: Design

Mounting Type: Track

PHYSICAL

Length (mm): 42

Length (in): 1 5/8

Width (mm): 120

Width (in): 4 3/4

Height (mm): 32

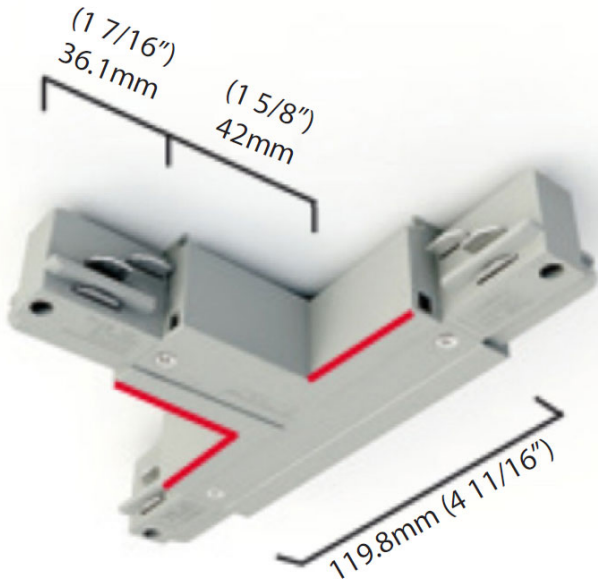
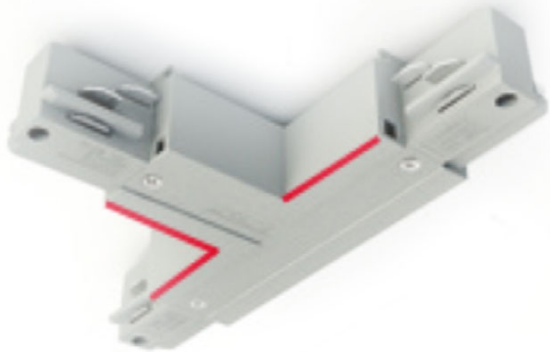
Height (in): 1 1/4

Fixture Finish: WHI / BLK / SIL

RATINGS AND CERTIFICATIONS

Certified By: Certified for North American Standards

PROJECT	
TYPE	
NOTES	
QUANTITY	
DATE	



D96043 COMPONENTS TRACK

D99069-

DESCRIPTION

Track - 2-Circuit - T Coupler - Inside Left -

GENERAL

Brand: Milan

Division: Design

Mounting Type: Track

PHYSICAL

Length (mm): 42

Length (in): 1 5/8

Width (mm): 120

Width (in): 4 3/4

Height (mm): 32

Height (in): 1 1/4

Fixture Finish: WHI / BLK / SIL

RATINGS AND CERTIFICATIONS

Certified By: Certified for North American Standards

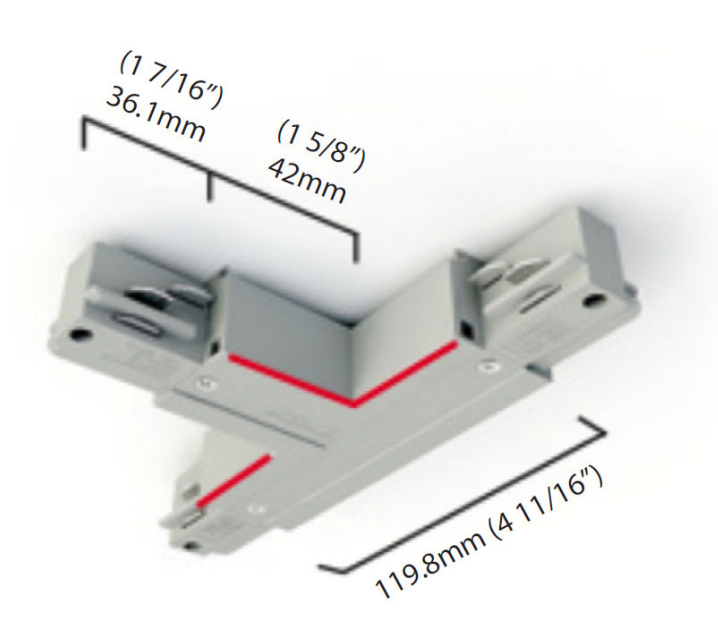
PROJECT

TYPE

NOTES

QUANTITY

DATE



D96043 COMPONENTS TRACK

D99072-

DESCRIPTION

Track - 2-Circuit - T Coupler - Outside Right -

GENERAL

Brand: Milan

Division: Design

Mounting Type: Track

PHYSICAL

Length (mm): 42

Length (in): 1 5/8

Width (mm): 120

Width (in): 4 3/4

Height (mm): 32

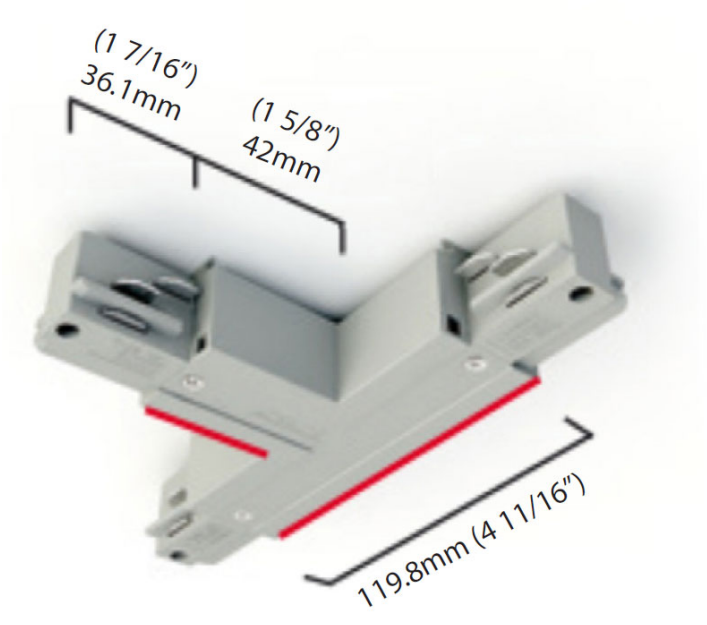
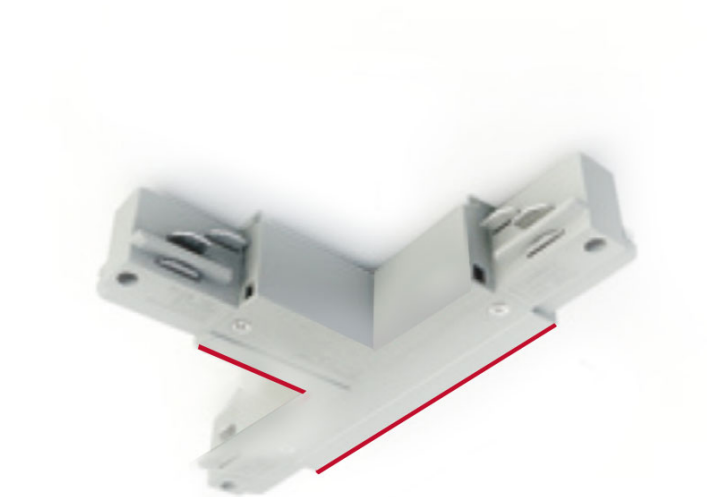
Height (in): 1 1/4

Fixture Finish: WHI / BLK / SIL

RATINGS AND CERTIFICATIONS

Certified By: Certified for North American Standards

PROJECT	
TYPE	
NOTES	
QUANTITY	
DATE	



D96043 COMPONENTS TRACK

D99075-

DESCRIPTION

Track - 2-Circuit - T Coupler - Outside Left -

GENERAL

Brand: Milan

Division: Design

Mounting Type: Track

PHYSICAL

Length (mm): 42

Length (in): 1 5⁄8

Width (mm): 120

Width (in): 4 3⁄4

Height (mm): 32

Height (in): 1 1⁄4

Fixture Finish: WHI / BLK / SIL

RATINGS AND CERTIFICATIONS

Certified By: Certified for North American Standards

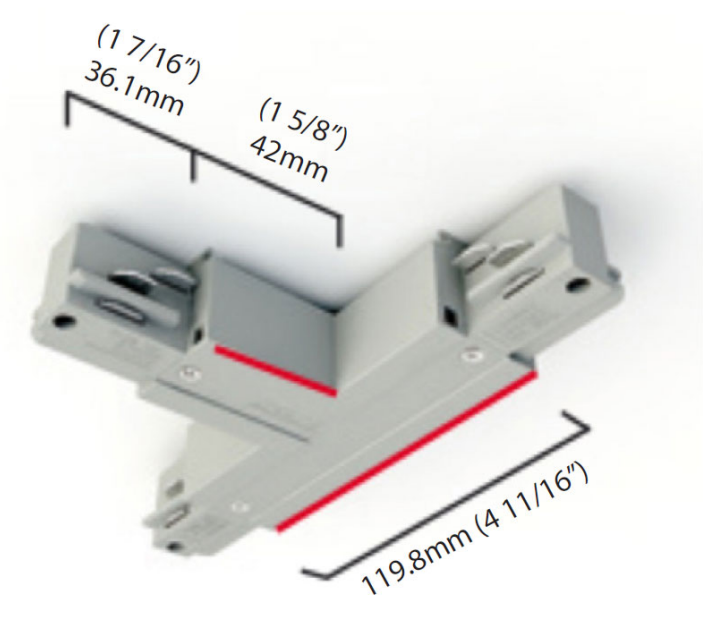
PROJECT

TYPE

NOTES

QUANTITY

DATE



D96043 COMPONENTS TRACK

D99078-

DESCRIPTION

Track - 2-Circuit - X Coupler - White

GENERAL

Brand: Milan

Division: Design

Mounting Type: Track

PHYSICAL

Length (mm): 120

Length (in): 4 ¾

Width (mm): 120

Width (in): 4 ¾

Height (mm): 32

Height (in): 1 ¼

Fixture Finish: WHI / BLK / SIL

RATINGS AND CERTIFICATIONS

Certified By: Certified for North American Standards

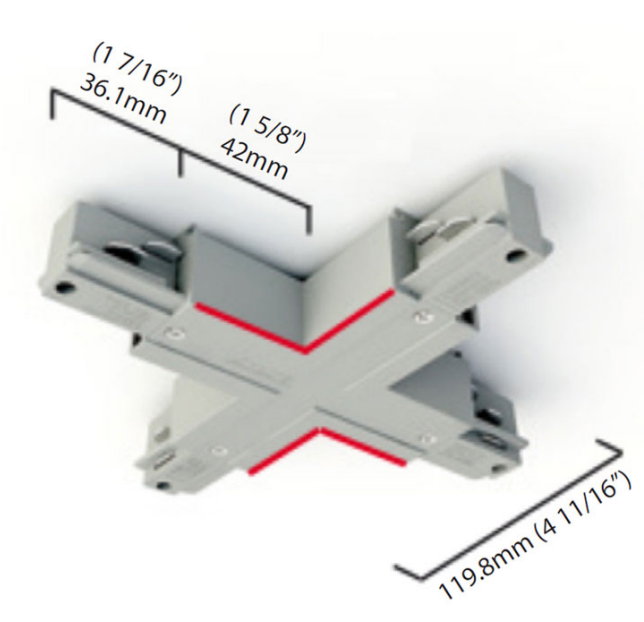
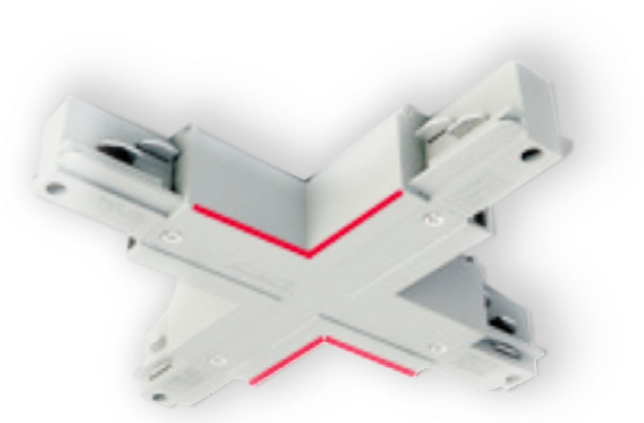
PROJECT

TYPE

NOTES

QUANTITY

DATE



D96043 COMPONENTS TRACK

D99081-

DESCRIPTION

Track - 2-Circuit - End Feed - Left

GENERAL

Brand: Milan

Division: Design

Mounting Type: Track

PHYSICAL

Length (mm): 72

Length (in): 2 ⁵³/₆₄

Width (mm): 36

Width (in): 1 ⁷/₁₆

Height (mm): 32

Height (in): 1 ¹/₄

Fixture Finish: WHI / BLK / SIL

RATINGS AND CERTIFICATIONS

Certified By: Certified for North American Standards

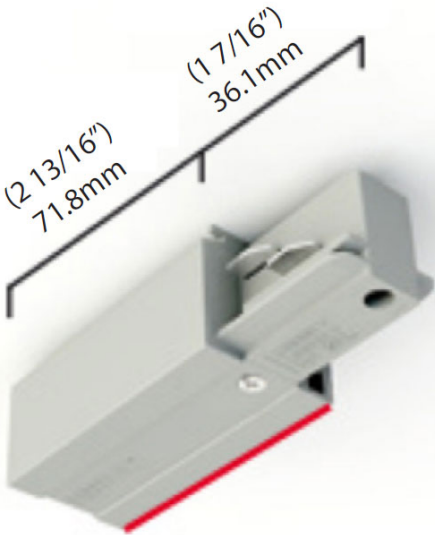
PROJECT

TYPE

NOTES

QUANTITY

DATE





D96043 COMPONENTS TRACK

D99084-

DESCRIPTION

Track - 2-Circuit - End Feed - Right

GENERAL

Brand: Milan
Division: Design
Mounting Type: Track

PHYSICAL

Length (mm): 72
Length (in): 2 ⁵³/₆₄
Width (mm): 36
Width (in): 1 ⁷/₁₆
Height (mm): 32
Height (in): 1 ¹/₄
Fixture Finish: WHI / BLK / SIL

RATINGS AND CERTIFICATIONS

Certified By: Certified for North American Standards

PROJECT

TYPE

NOTES

QUANTITY

DATE



D96043 COMPONENTS TRACK

D99087-

DESCRIPTION
Track - 2-Circuit - End Cap

GENERAL

Brand: Milan
Division: Design
Mounting Type: Track

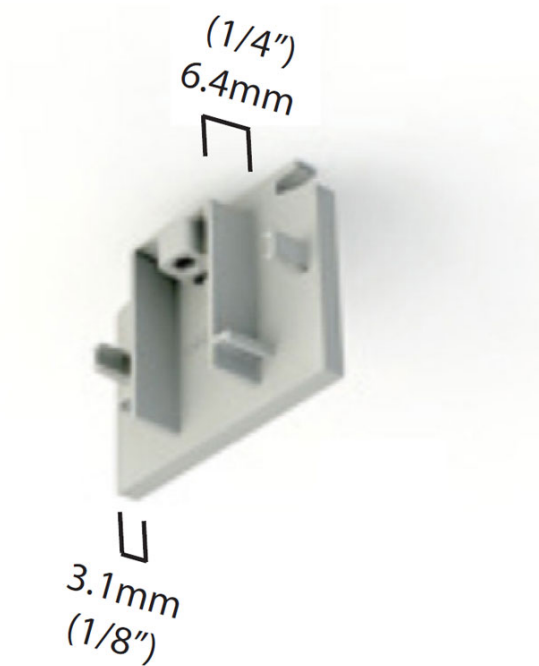
PHYSICAL

Width (mm): 65
Width (in): 2 1/2
Height (mm): 30
Height (in): 1 1/4
Fixture Finish: WHI / BLK / SIL

RATINGS AND CERTIFICATIONS

Certified By: Certified for North American Standards
--

PROJECT
TYPE
NOTES
QUANTITY
DATE



D96043 COMPONENTS TRACK

D99090-

DESCRIPTION

Track - 2-Circuit - Straight Coupler

GENERAL

Brand: Milan

Division: Design

Mounting Type: Track

PHYSICAL

Length (mm): 62

Length (in): 2 3⁄8

Width (mm): 36

Width (in): 1 7⁄16

Height (mm): 32

Height (in): 1 ¼

Fixture Finish: WHI / BLK / SIL

RATINGS AND CERTIFICATIONS

Certified By: Certified for North American Standards

PROJECT

TYPE

NOTES

QUANTITY

DATE



D96043 COMPONENTS TRACK

D99093-

DESCRIPTION

Track - 2-Circuit - L-Coupler - Outside - White

GENERAL

Brand: Milan

Division: Design

Mounting Type: Track

PHYSICAL

Length (mm): 78

Length (in): 3 1/16

Width (mm): 78

Width (in): 3 1/16

Height (mm): 32

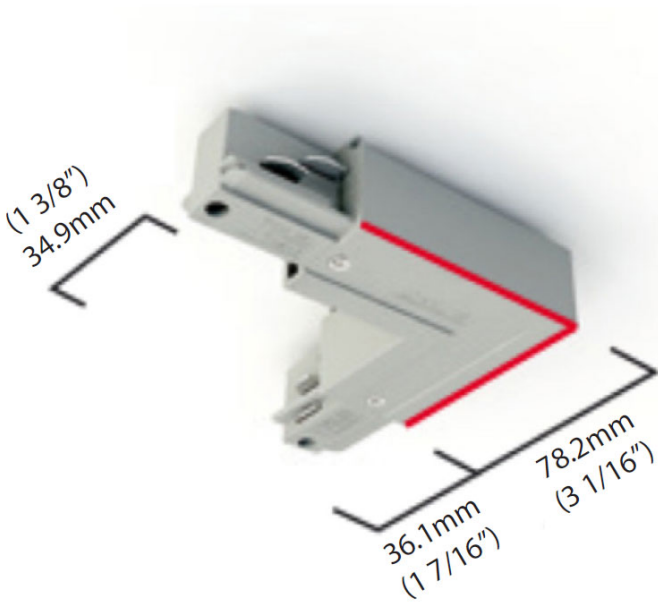
Height (in): 1 1/4

Fixture Finish: WHI / BLK / SIL

RATINGS AND CERTIFICATIONS

Certified By: Certified for North American Standards

PROJECT
TYPE
NOTES
QUANTITY
DATE



D96043 COMPONENTS TRACK

D99096-

DESCRIPTION

Track - 2-Circuit - L-Coupler - Inside

GENERAL

Brand: Mizar

Division: Design

Mounting Type: Track

PHYSICAL

Length (mm): 78

Length (in): 3 1/16

Width (mm): 78

Width (in): 3 1/16

Height (mm): 32

Height (in): 1 1/4

Fixture Finish: WHI / BLK / SIL

RATINGS AND CERTIFICATIONS

Certified By: Certified for North American Standards

PROJECT

TYPE

NOTES

QUANTITY

DATE



D96043 COMPONENTS TRACK

D99099-

DESCRIPTION

Track - 2-Circuit - I Coupler

GENERAL

Brand: Milan

Division: Design

Mounting Type: Track

PHYSICAL

Length (mm): 120

Length (in): 4 11⁄16

Width (mm): 36

Width (in): 1 7⁄16

Height (mm): 32

Height (in): 1 ¼

Fixture Finish: WHI / BLK / SIL

RATINGS AND CERTIFICATIONS

Certified By: Certified for North American Standards

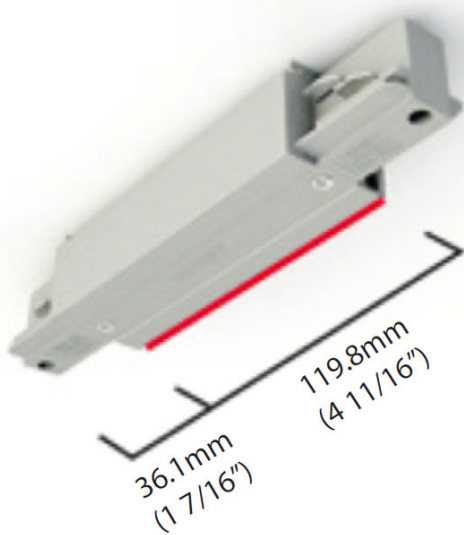
PROJECT

TYPE

NOTES

QUANTITY

DATE



D96043 COMPONENTS TRACK

D99102-

DESCRIPTION

Track - 2-Circuit - Flex Coupler

GENERAL

Brand: Milan
Division: Design
Mounting Type: Track

PHYSICAL

Length (mm): 264
Length (in): 10 3⁄4
Width (mm): 36
Width (in): 1 7⁄16
Height (mm): 32
Height (in): 1 ¼
Fixture Finish: WHI / BLK / SIL

RATINGS AND CERTIFICATIONS

Certified By: Certified for North American Standards

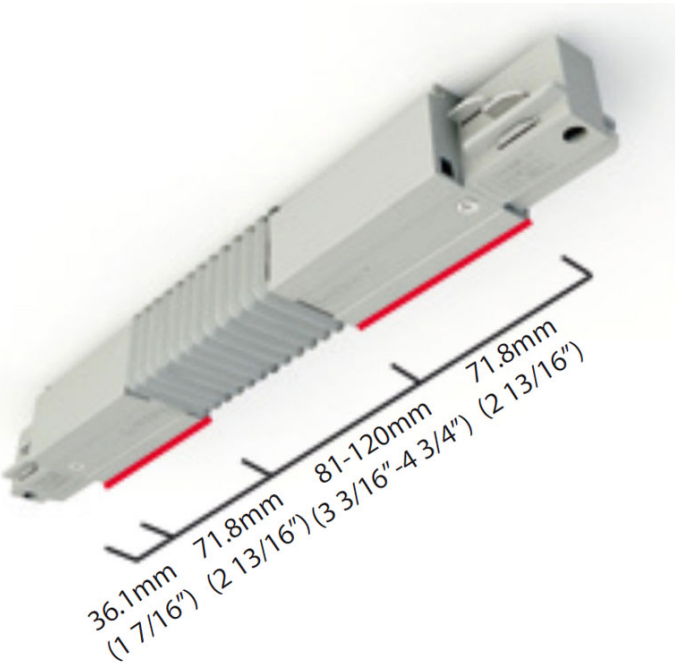
PROJECT

TYPE

NOTES

QUANTITY

DATE



D96043 COMPONENTS TRACK

D99105-

DESCRIPTION
Track - 2-Circuit - Mid Feed

GENERAL

Brand: Milan
Division: Design
Mounting Type: Track

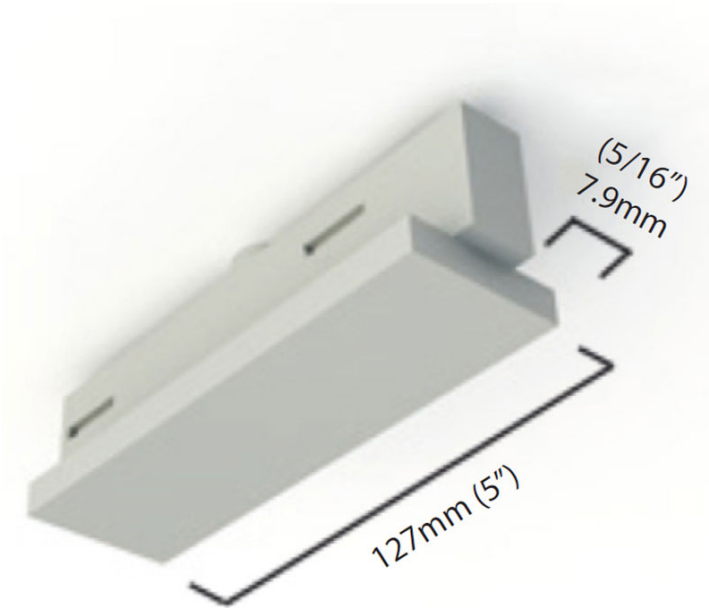
PHYSICAL

Length (mm): 127
Length (in): 5.0
Width (mm): 36
Width (in): 1 7/16
Height (mm): 32
Height (in): 1 1/4
Fixture Finish: WHI / BLK / SIL

RATINGS AND CERTIFICATIONS

Certified By: Certified for North American Standards
--

PROJECT
TYPE
NOTES
QUANTITY
DATE



PROJECT	
TYPE	
NOTES	
QUANTITY	
DATE	

LEGEND

	floor-mounted		pivotal		special LED (upon request) RGB, RGBW, tunable, gold+, meat+, art+, fashion+
	wall and ceiling: recessed and surface mounted		rotating		warm dim / natural dimming LED
	ceiling-mounted and wall-mounted		illuminate tilted		rechargeable battery powered
	wall-mounted		color of suspension cable		fixture with natural vivid LED (upon request)
	omni-directional light distribution		length of suspension cable		color rendering index
	direct light distribution		reflector degree selection		color temperature
	direct/indirect light distribution		super spot		lumen (luminous flux)
	indirect light distribution		lens		efficacy (lumens per watt)
	asymmetric light distribution		lens pack		Unified Glare Rating (UGR) range from 5-40
	aura light distribution		shine ring		marine grade (AISI 316 stainless steel)
	round wall or ceiling cut-out		integrated shine ring with diffuser		walk on
	square wall or ceiling cut-out		free individual colors 01-29		drive on
	the supplied jig specifies the cutout dimensions		individual colors: 00 (free of charge), 01-25 (extra charge)		Dark Sky Compliance
	minimum distance (meters) lamp - object		luminaire part to be colored (F1)		Americans with Disabilities Act (less than 4" off the wall located between 27"-84" from floor)
	recessed depth		luminaire part to be colored (F2)		lamp protected against explosion
	ceiling thickness in mm		luminaire part to be colored (F3)		blown glass using traditional methods by master glass blower
	ceiling thickness selection		luminaire part to be colored (F4)		acoustic material
	dimmable DP (phase), DV (0-10V), DD (dali), DS (step-dim)		luminaire part to be colored (F5)		protection class I, protection insulation
	included or excluded LED driver/transformer/control gear		color of 3-circuit adaptor		protection class II, protection insulation
	separately switchable		indirect diffuser		ETL Certified to UL and CSA Standards
	sensor		direct diffuser		UL Certified to UL and CSA Standards
	remote control		ball-proof (upon request)		CSA Certified to UL and CSA Standards
	available upon request		accessory		Certified for North American Standards

IP RATING

	protected against ingress of solid bodies greater than 12.5mm (finger)
	protected against ingress of solid bodies greater than 2.5mm protected against sprays of water up to 60 degrees from the vertical (rain)
	protected against ingress of solid bodies greater than 1mm (wire) no protection against the ingress of moisture
	protected against ingress of solid bodies greater than 1mm (wire) protected against sprays of water up to 60 degrees from the vertical (rain)
	protected against ingress of solid bodies greater than 1mm (wire) protected against water splashed from all directions
	protected against limited ingress of dust (wet rooms/covered outdoor areas) protected against water splashed from all directions
	protected against ingress of dust protected against jets of water
	protected against ingress of dust protected against powerful jets of water or heavy seas
	protected against ingress of dust protected against immersion of water between 15cm - 1m for 30 minutes
	protected against ingress of dust protected against immersion of water under pressure for long periods

IK RATING

	protected against 0.14 joules impact (equivalent to 0.25kg mass dropped from 56mm above the surface)
	protected against 0.2 joules impact (equivalent to 0.25kg mass dropped from 80mm above the surface)
	protected against 0.35 joules impact (equivalent to 0.25kg mass dropped from 140mm above the surface)
	protected against 0.5 joules impact (equivalent to 0.25kg mass dropped from 200mm above the surface)
	protected against 0.7 joules impact (equivalent to 0.25kg mass dropped from 280mm above the surface)
	protected against 1 joules impact (equivalent to 0.25kg mass dropped from 400mm above the surface)
	protected against 2 joules impact (equivalent to 0.5kg mass dropped from 400mm above the surface)
	protected against 5 joules impact (equivalent to 1.7kg mass dropped from 300mm above the surface)
	protected against 10 joules impact (equivalent to 5.0kg mass dropped from 200mm above the surface)
	protected against 20 joules impact (equivalent to 5.0kg mass dropped from 400mm above the surface)