

A30531- SUPER-G 150 SUSPENSION

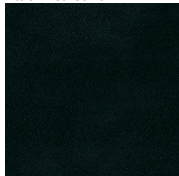
COLOR FINISH CHART

PROJECT	
TYPE	
NOTES	
QUANTITY	
DATE	

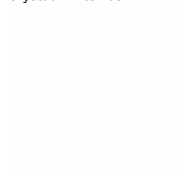
Sparkling Silver - 01



Black Velvet - 02



Crystal White - 03



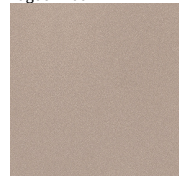
Creamy - 04



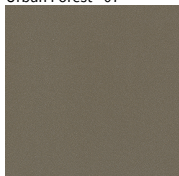
Hampton Bay - 05



Lagoon - 06



Urban Forest - 07



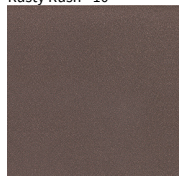
In the Army - 08



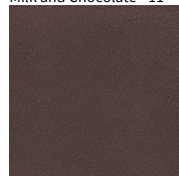
Rusty Angel - 09



Rusty Rush - 10



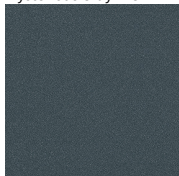
Milk and Chocolate - 11



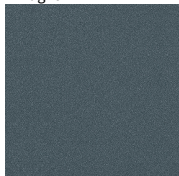
Fade to Gray - 12



Mysterious Gray - 13



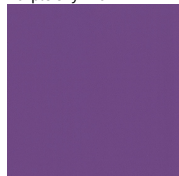
Twilight - 14



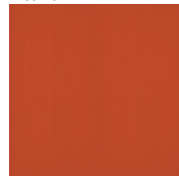
Lost Dream - 15



Purple Sky - 16



Fresh Oh - 17



Funky P. - 18



Kissing Aphrodite - 19



Poseidon's Paradise - 20



Blue Sky - 21



Spring Green - 22



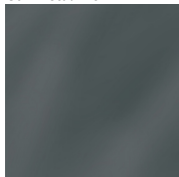
Mellow Yellow - 23



Golden Heart - 24



Gun Metal - 25



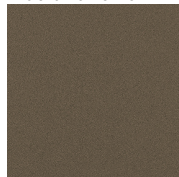
Champagne Cream - 26



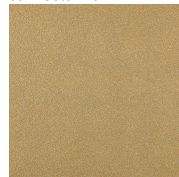
Copper Mine - 27



Ancient Bronze - 28



Jazz Gold - 29



Digital: Not all screens are calibrated the same, and therefore, colors will appear differently between screens.

Physical: When texture is involved, there will be variations in color, character and tone within a product series and between product families.

Gun Metal: No Gun Metal finish is alike. It combines a mixture of transparent and black color particles which ensures a highly individual effect and no luminaire being identical.

Champagne Cream, Copper Mine, Ancient Bronze + Jazz Gold: These finishes have slight fading from specific powder coating production. Each luminaire will slightly vary.