

SPOT SURFACE

L9C069-

PROJECT _____

TYPE _____

NOTES _____

QUANTITY _____

DATE _____

GENERAL

Division: Exterior

Series: Spot

Mounting Type: Surface

Mounting Location: Ceiling

Subcategory: Downlight

Brand: Platek

PHYSICAL

Shape: Cylinder

Diameter (mm): 200

Diameter (in): 7 7/8

Height (mm): 268

Height (in): 10 9/16

Weight (kg): 3 kg / 6.6 lbs

Screws: A4 stainless steel

Light Distribution: Downlight

Diffuser: Clear tempered glass

Fixture Finish: BLK / WHI / GRY / COR / ANT / BRZ

Fixture Material: Aluminum Die Cast

ELECTRICAL

Lamp Type: LED

Dimming: Tri-Mode (Non-Dimming and Phase Dimming (120Vac only) and 0-10V Dimming)

Driver Included: Yes

Driver Location: Integrated

Driver Type: Constant Current - Universal

Driver Class: Class 2

Input Voltage (V): 120 / 277

Input Wattage (W): 21

Total Output Wattage (W): 19.5

Constant Current (mA): 350

Input Wattage (Range): 20 - 29 W

Upon Request: (Not included - see components [IP65 or higher enclosure to be supplied by others]) Remote: 0-10Vdc dimming / (Included) Integral: Phase dimming @120Vac only / Non-dimming 277Vac

LED

Color Temperature (°K): 3000 / 4000

Delivered Lumens (Range): 1000 - 2999 lm

Max. Delivered Lumen (lm): 2010 / 2090

Nominal Lumen (lm): 2280 / 2400

CRI: >80 CRI

Lamp Life (hrs): 60000

OPTICAL

Optic°: 28 / 45

RATINGS AND CERTIFICATIONS

Certified By: Certified for North American Standards

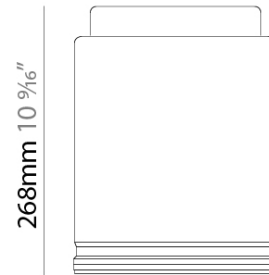
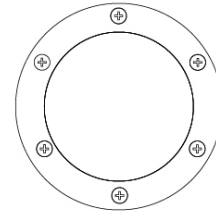
IP rating: IP65

IK Rating: IK10



200mm 7 7/8"

153mm 6"



SPOT SURFACE

L9C069-

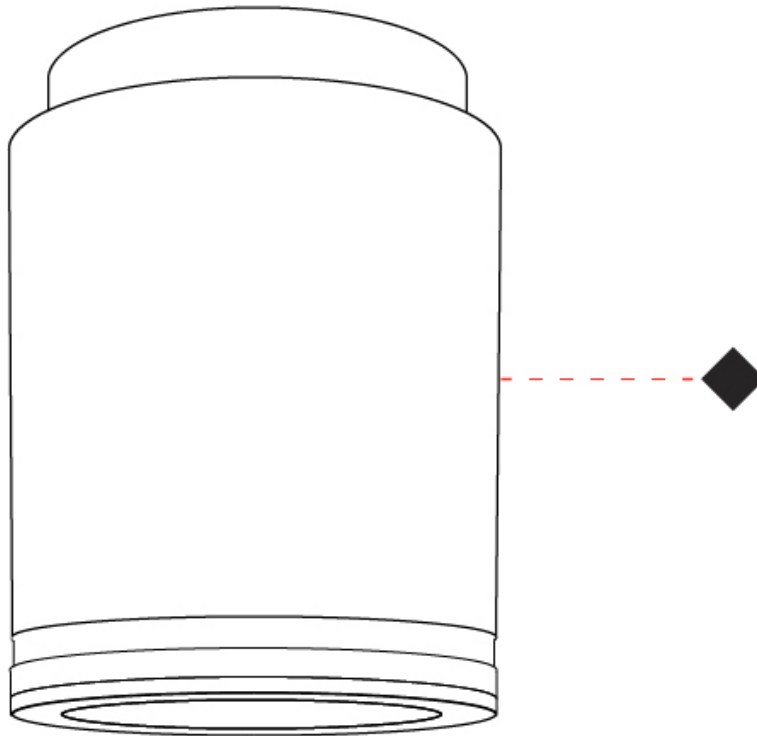
PROJECT _____

TYPE _____

NOTES _____

QUANTITY _____

DATE _____



E

SPOT SURFACE COLOR FINISH CHART

PROJECT _____

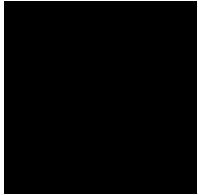
TYPE _____

NOTES _____

QUANTITY _____

DATE _____

Black - BLK



White - WHI



Gray - GRY



Corten - COR



Anthracite - ANT



Bronze - BRZ



Digital: Not all screens are calibrated the same, and therefore, colors will appear differently between screens.

Physical: When texture is involved, there will be variations in color, character and tone within a product series and between product families.

